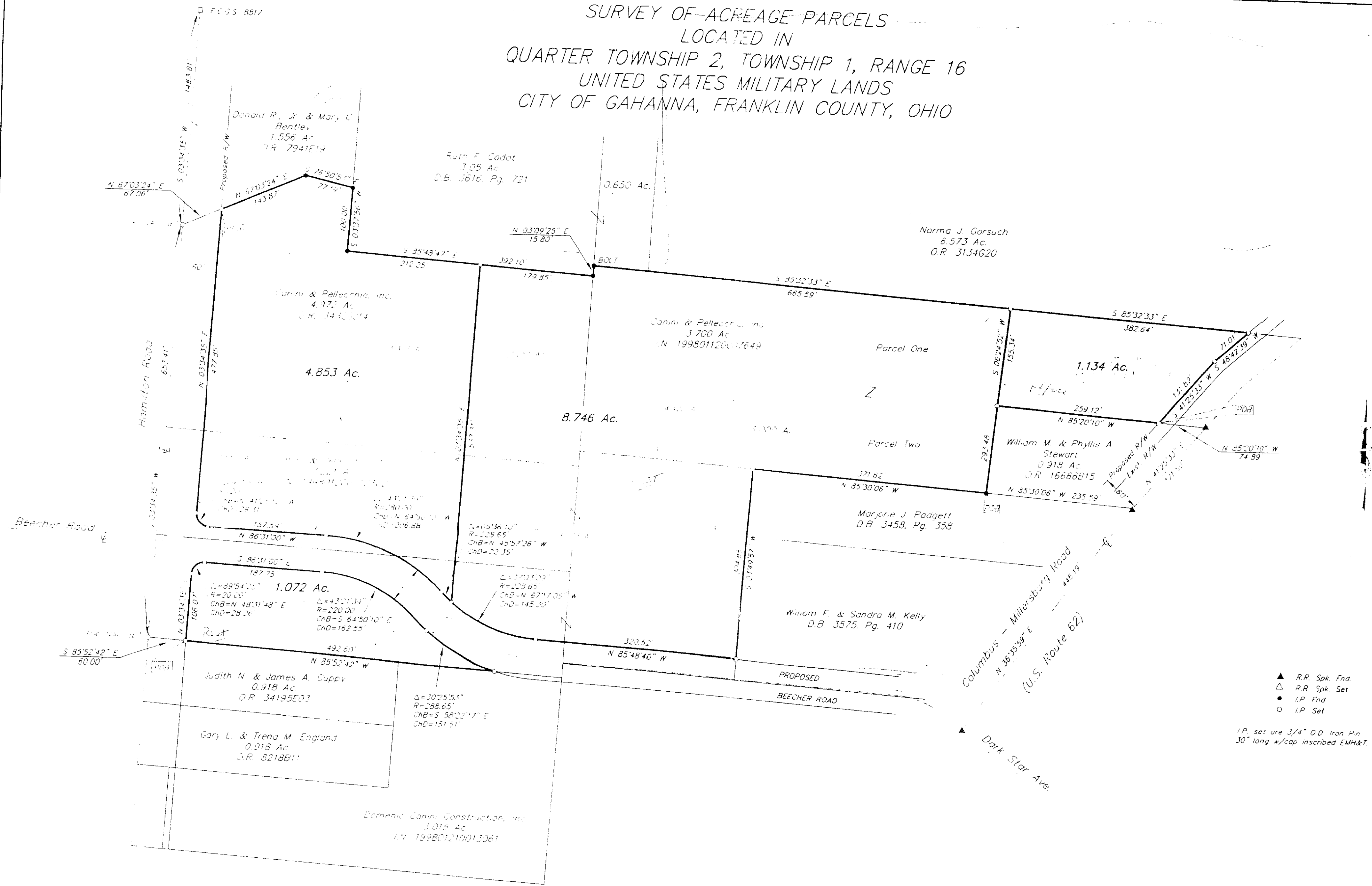
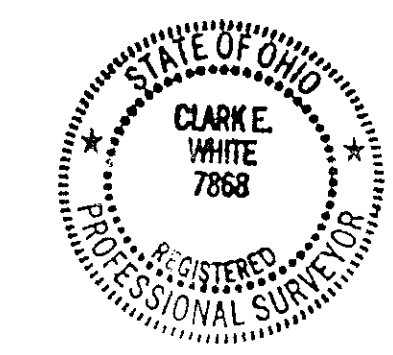
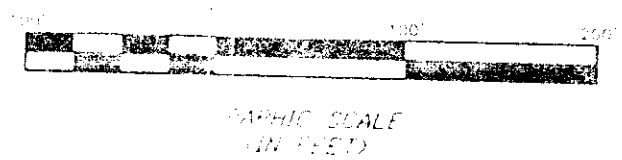


SURVEY OF ACREAGE PARCELS
LOCATED IN
QUARTER TOWNSHIP 2, TOWNSHIP 1, RANGE 16
UNITED STATES MILITARY LANDS
CITY OF GAHANNA, FRANKLIN COUNTY, OHIO



▲ R.R. Spk. End
 △ R.R. Spk. Set
 ● I.P. End
 ○ I.P. Set
 I.P. set are 3/4" O.D. Iron Pin
 30" long w/cap inscribed EMH&T

BASIS OF BEARINGS: Bearings shown herein are based on the 1983 Ohio
 Plane Coordinate System as per NAD83 control for bearings was the
 coordinates of monuments, Frank 83 to Stark 162 having a bearing
 of South 88°02'16" East, established by the Franklin County Engineering
 Department, using Global Positioning System procedures and equipment.



SURVEYED & PLATTED
 BY
EMT
 CONSULTING ENGINEERS & SURVEYORS
 170 MILL STREET
 GAHANNA, OHIO 43230
 (614) 471-5150

By *Clark E. White*
 Professional Surveyor No. 7868