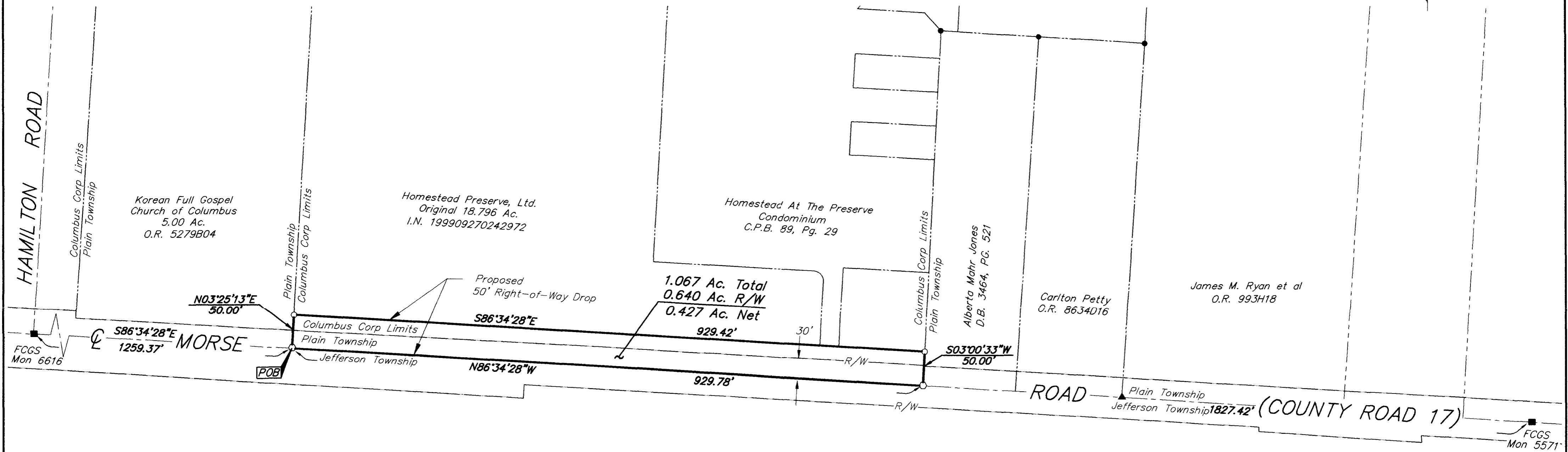


SURVEY OF ACREAGE PARCEL
QUARTER TOWNSHIP 3, TOWNSHIP 2, RANGE 16
UNITED STATES MILITARY LANDS
CITY OF COLUMBUS & PLAIN TOWNSHIP, FRANKLIN COUNTY, OHIO



G:\PROJECT\20021178\DWG\21178RD.DWG - O. KRETS - PLOTTED BY JUBUSHBY - August 06, 2002 - 11:44 AM

- = MON. FND.
- = I.P. FND.
- = I.P. SET
- = MAG. NAIL FND.
- = MAG. NAIL SET
- ▲ = R.R. SPK. FND.
- △ = R.R. SPK. SET
- ◆ = P.K. NAIL FND.

I.P.S Set are 13/16" I.D. Iron pipe W/ cap inscribed EMHT INC



GRAPHIC SCALE
(IN FEET)

The basis of bearing for this drawing is N86° 34' 28"W for the centerline of Morse Road between Franklin County Geodetic Survey Monument Nos. 6616 and 5571.



Clark E. White 8/6/02
 Professional Surveyor No. 7868

Surveyed & Prepared
 By
EVANS, MECHWART, HAMBLETON & TILTON INC.
 CONSULTING ENGINEERS & SURVEYORS
 170 MILL STREET
 GAHANNA, OHIO 43230
 614/471-5150

SCALE: 1" = 100' AUGUST 6, 2002