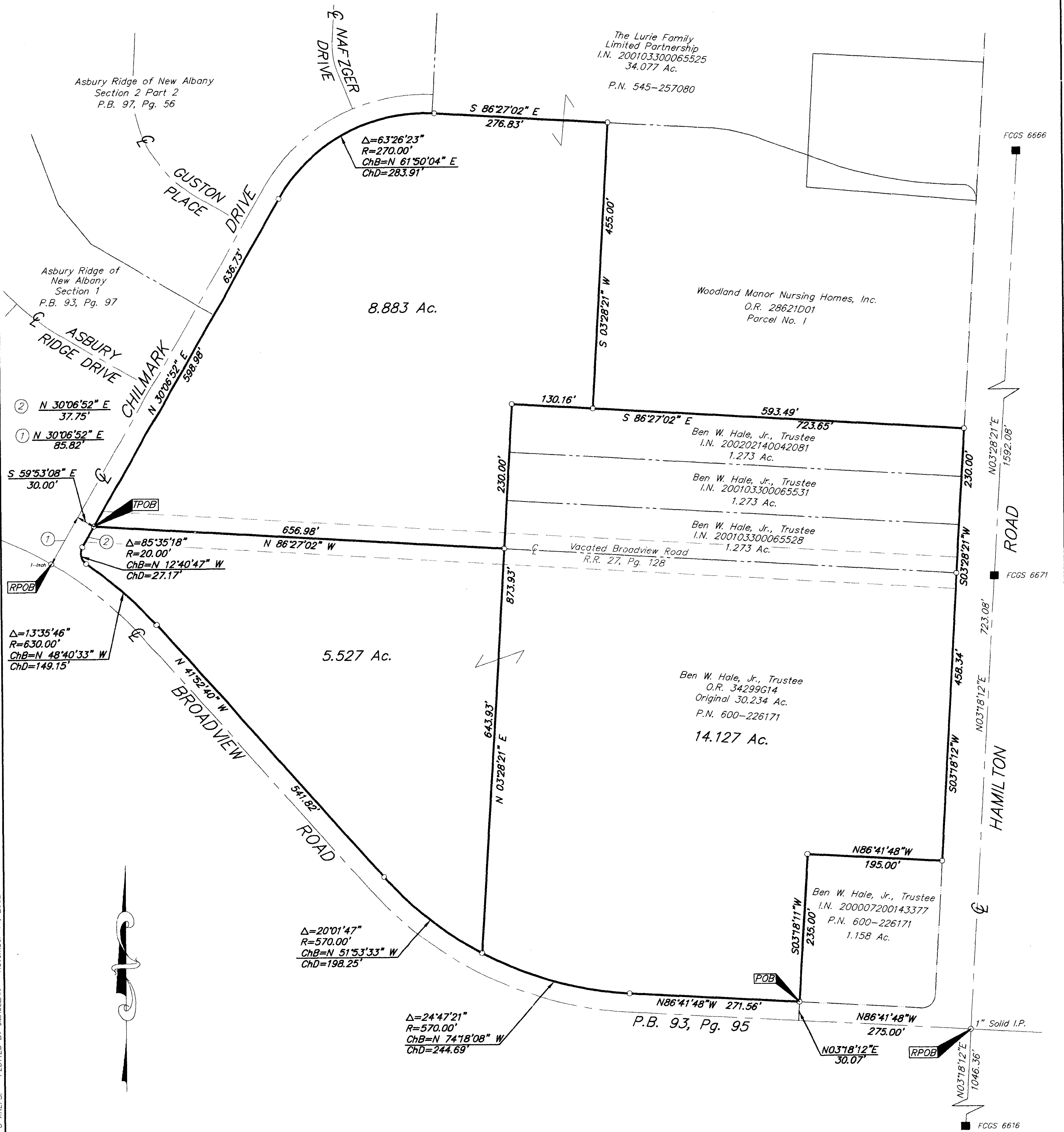


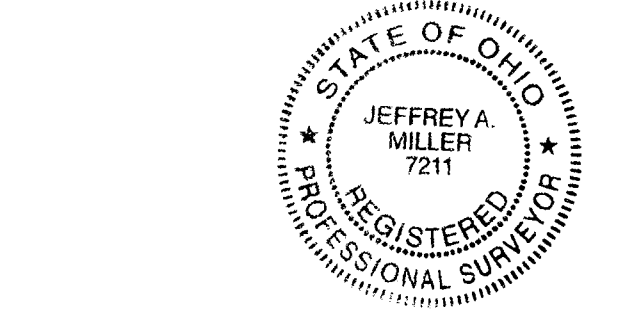
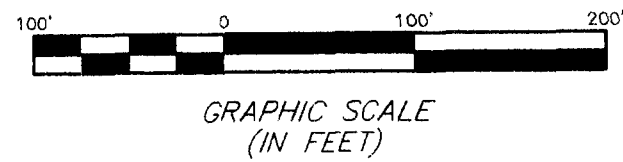
SURVEY OF ACREAGE PARCELS
 QUARTER TOWNSHIP 4, TOWNSHIP 2, RANGE 17
 UNITED STATES MILITARY LANDS
 CITY OF COLUMBUS, FRANKLIN COUNTY, OHIO



C:\PROJECT\20021109\DWG\21109B\2.DWG - O.XREFS - PLOTTED BY JMACLEAN - November 11, 2002 - 11:06 AM

- = MON. FND.
 - = I.P. FND.
 - = I.P. SET
 - = MAG. NAIL FND.
 - = MAG. NAIL SET
 - ▲ = R.R. SPK. FND.
 - △ = R.R. SPK. SET
 - = P.K. NAIL FND.
- I.P.S. Set are 1 3/16" I.D. Iron pipe w/ cap inscribed EMHT INC

BASIS OF BEARINGS:
 Bearings are based on the same bearing system as "Asbury Ridge of New Albany Section 1" as recorded in P.B. 93, Pg. 97



By *Jeffrey A. Miller* 11-12-02
 Professional Surveyor No. 7211

Surveyed & Prepared By
EVANS, MECHWART, HAMBLETON & TILTON INC.
 CONSULTING ENGINEERS & SURVEYORS
 170 MILL STREET
 GAHANNA, OHIO 43230
 614/471-5150

SCALE: 1" = 100' NOVEMBER 11, 2002