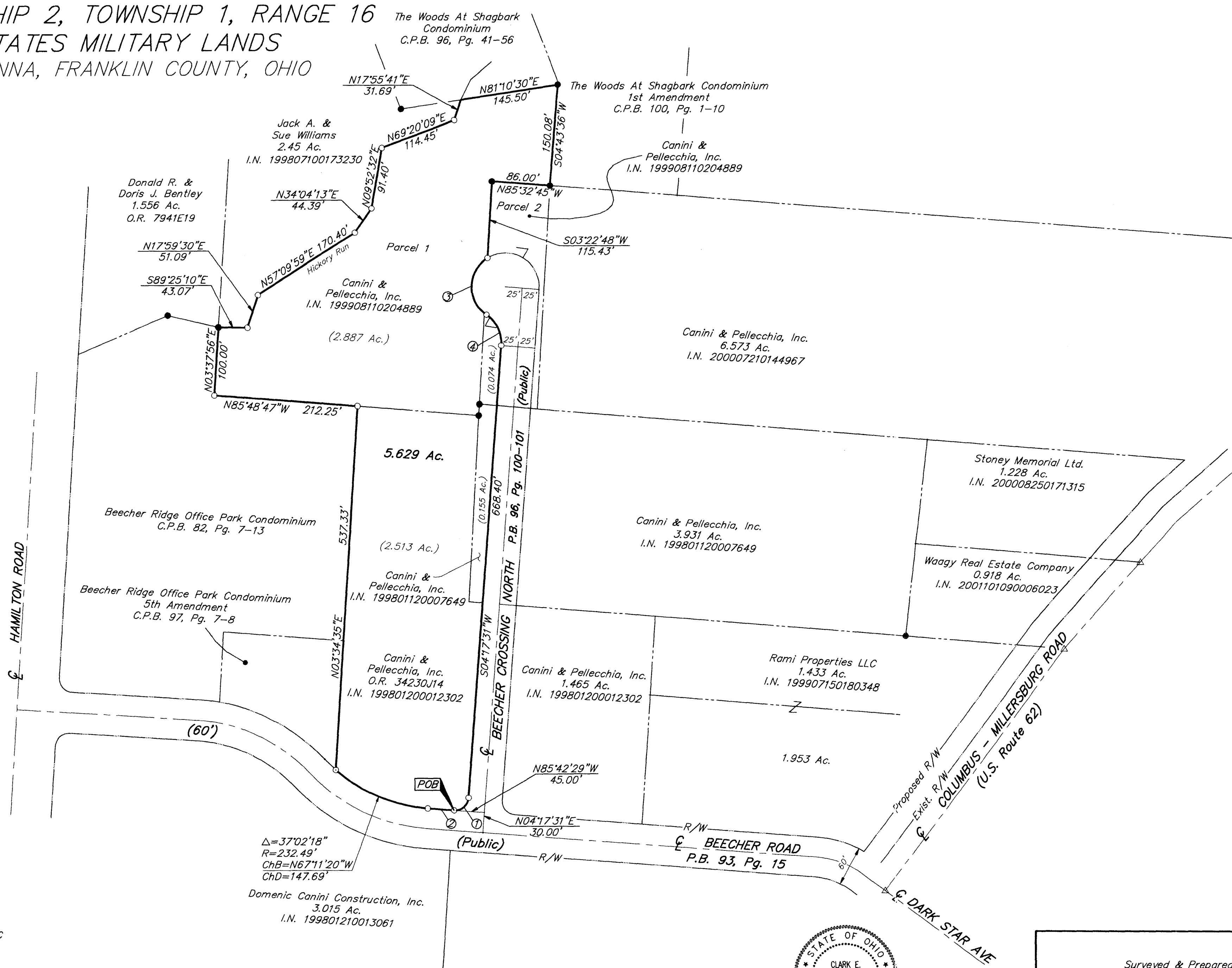
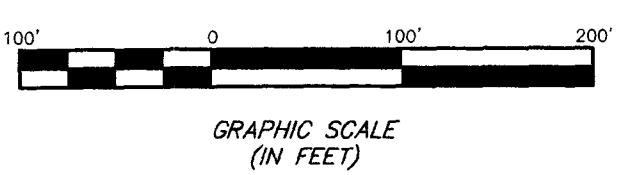


SURVEY OF ACREAGE PARCEL
QUARTER TOWNSHIP 2, TOWNSHIP 1, RANGE 16
UNITED STATES MILITARY LANDS
CITY OF GAHANNA, FRANKLIN COUNTY, OHIO

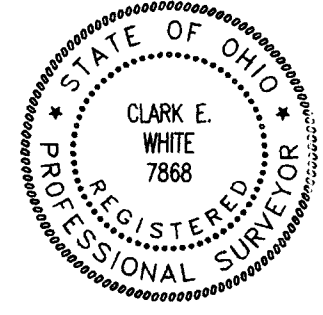


- ① $\Delta=90^{\circ}00'00''$
 $R=20.00'$
 $ChB=S49^{\circ}17'31''W$
 $ChD=28.28'$
- ② $N85^{\circ}42'29''W$
 $38.79'$
- ③ $\Delta=113^{\circ}57'04''$
 $R=50.00'$
 $ChB=S01^{\circ}16'03''W$
 $ChD=83.84'$
- ④ $\Delta=60^{\circ}00'00''$
 $R=50.00'$
 $ChB=S25^{\circ}42'29''E$
 $ChD=50.00'$

- = MON. FND.
 - = I.P. FND.
 - = I.P. SET
 - = MAG. NAIL FND.
 - = MAG. NAIL SET
 - ▲ = R.R. SPK. FND.
 - △ = R.R. SPK. SET
 - = P.K. NAIL FND.
- I.P.S Set are 13/16" I.D. Iron pipe w/ cap inscribed EMHT INC



BASIS OF BEARINGS: Bearings are based on the Ohio State Plane Coordinate System as per NAD83. Control for bearings was from coordinates of monuments, Frank 69 & Frank 169, having a bearing of North $88^{\circ}02'16''$ East, established by the Franklin County Engineering Department, using Global Positioning System procedures and equipment.



By *Clark E. White*
 Professional Surveyor No. 7868

Surveyed & Prepared
 By
EVANS, MECHWART, HAMBLETON & TILTON INC.
 CONSULTING ENGINEERS & SURVEYORS
 170 MILL STREET
 GAHANNA, OHIO 43230
 614/471-5150

SCALE: 1" = 100' MARCH 13, 2002

Q:\PROJECT\20020275.01\DWG\20275B12.DWG - 0 XREFS: - PLOTTED BY JMACLEAN - March 12, 2002 - 4:03 PM