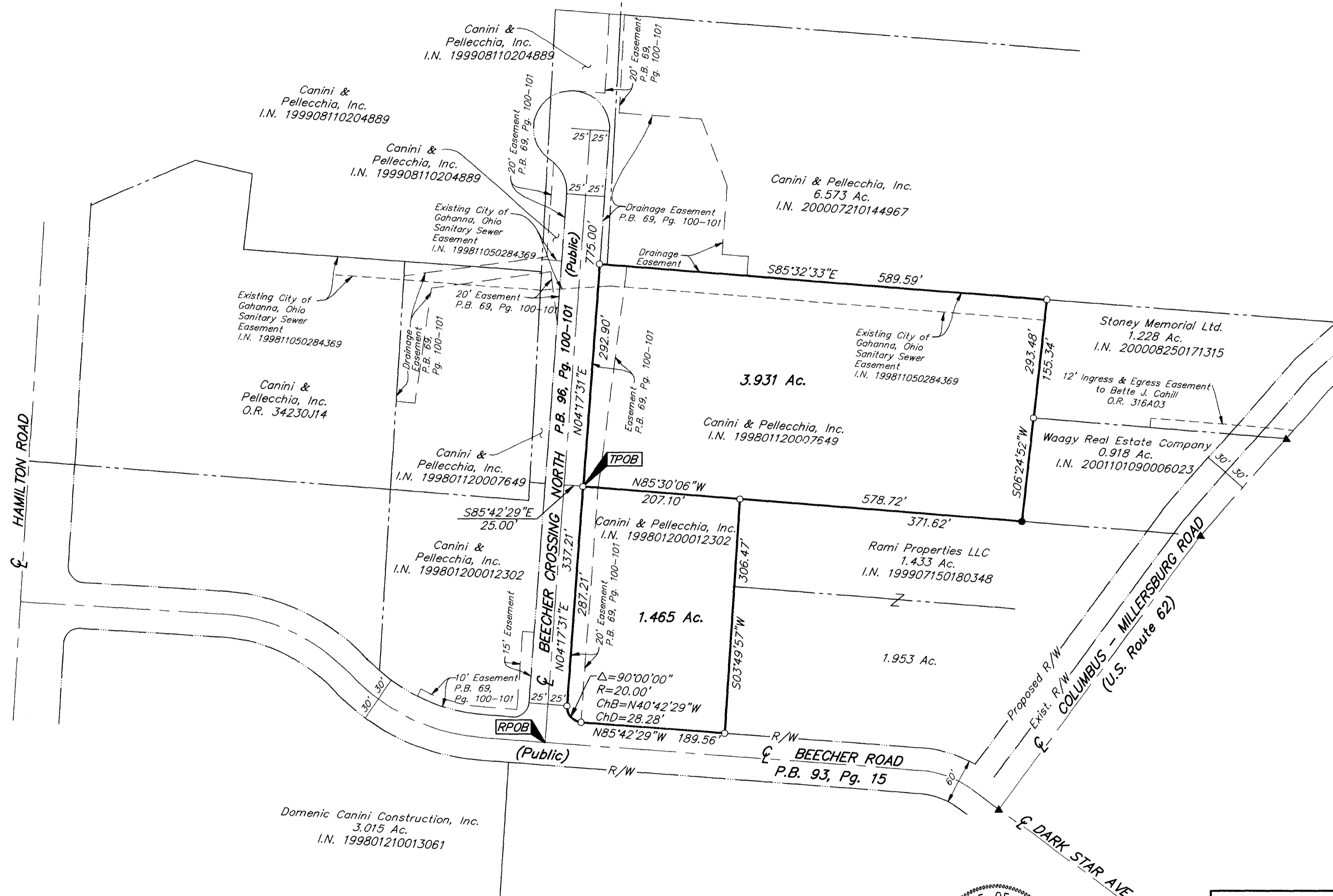
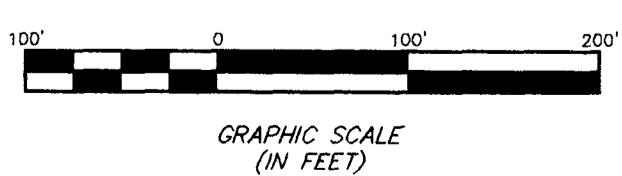


**SURVEY OF ACREAGE PARCELS**  
**QUARTER TOWNSHIP 2, TOWNSHIP 1, RANGE 16**  
**UNITED STATES MILITARY LANDS**  
**CITY OF GAHANNA, FRANKLIN COUNTY, OHIO**



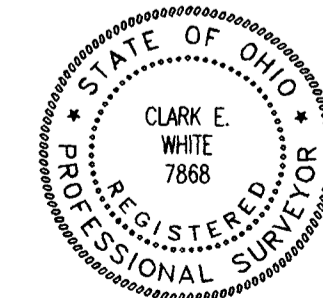
Q:\PROJECT\20020275.01\DWG\2027501.DWG - 0 XREFS - PLOTTED BY MGREEN - February 18, 2002 - 11:18 AM



**BASIS OF BEARINGS:** Bearings are based on the Ohio State Plane Coordinate System as per NAD83. Control for bearings was from coordinates of monuments, Frank 69 & Frank 169, having a bearing of North 88°02'16" East, established by the Franklin County Engineering Department, using Global Positioning System procedures and equipment.

- = MON. FND.
- = I.P. FND.
- = I.P. SET
- = MAG. NAIL FND.
- = MAG. NAIL SET
- ▲ = R.R. SPK. FND.
- △ = R.R. SPK. SET
- ◆ = P.K. NAIL FND.

I.P.S. Set are 13/16" I.D. Iron pipe W/ cap inscribed EMHT INC



By *Clark E. White* 2/18/02  
 Professional Surveyor No. 7868

Surveyed & Prepared  
 By  
**EVANS, MECHWART, HAMBLETON & TILTON INC.**  
 CONSULTING ENGINEERS & SURVEYORS  
 170 MILL STREET  
 GAHANNA, OHIO 43230  
 614/471-5150

SCALE: 1" = 100'      FEBRUARY 18, 2002