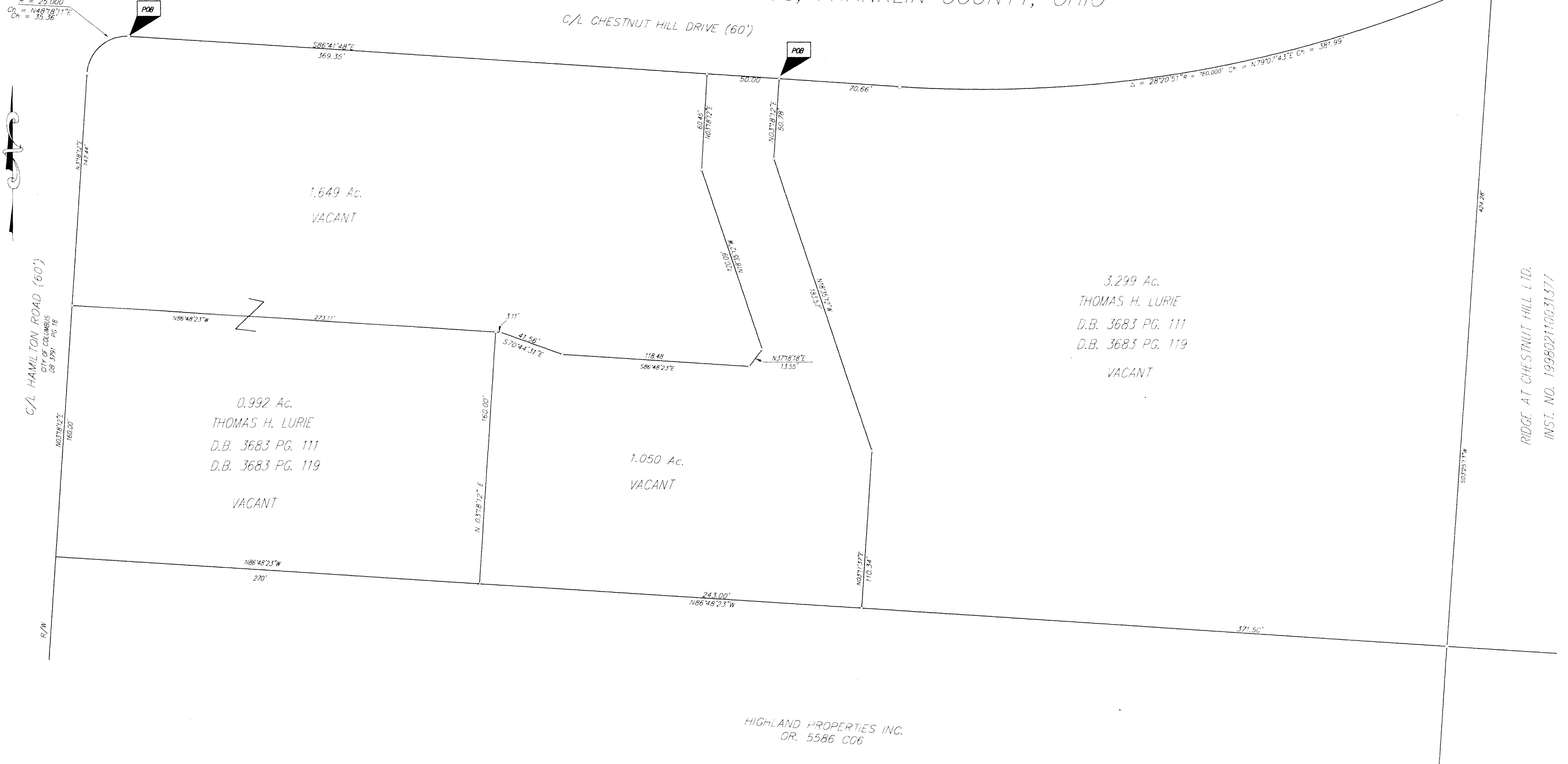


SURVEY OF ACREAGE PARCELS  
 LOCATED IN  
 QUARTER TOWNSHIP 3, TOWNSHIP 2, RANGE 16  
 UNITED STATES MILITARY LANDS  
 CITY OF COLUMBUS, FRANKLIN COUNTY, OHIO

C/L CHESTNUT HILL DRIVE (60')

$\Delta = 90^{\circ}00'00''$   
 $R = 25,000'$   
 $Ch = N48^{\circ}18'11''E$   
 $C = 35.36'$



RIDGE AT CHESTNUT HILL L.D.  
 INST. NO. 199802110031377

HIGHLAND PROPERTIES INC.  
 OR. 5586 C06

$\blacktriangle$  = R.R. SPK. FND.  
 $\triangle$  = R.R. SPK. SET  
 $\bullet$  = I.P. FND.  
 $\circ$  = I.P. SET

I.P.S. Set are 1 3/16" I.D. iron pipe w/ cap inscribed EMH&T.

By *Conrad R. Dibel*  
 Professional Surveyor No. 5425

BASIS OF BEARINGS: THE BEARINGS ARE BASED ON THE OHIO STATE PLANE COORDINATE SYSTEM AS PER NAD83 IN WHICH THE CENTERLINE OF CHESTNUT HILL DRIVE HAS A BEARING OF NORTH 86° 41' 48" WEST. CONTROL FOR BEARINGS ARE FROM COORDINATES OF MONUMENTS ESTABLISHED BY THE FRANKLIN COUNTY ENGINEERING DEPARTMENT.

Surveyed & Prepared  
 By  
**EVANS, MECHWART, HAMBLETON & TILTON INC.**  
 CONSULTING ENGINEERS & SURVEYORS  
 170 MILL STREET  
 GAHANNA, OHIO 43230  
 614/471-5150

SCALE: 1"=30'      MARCH 13, 1998