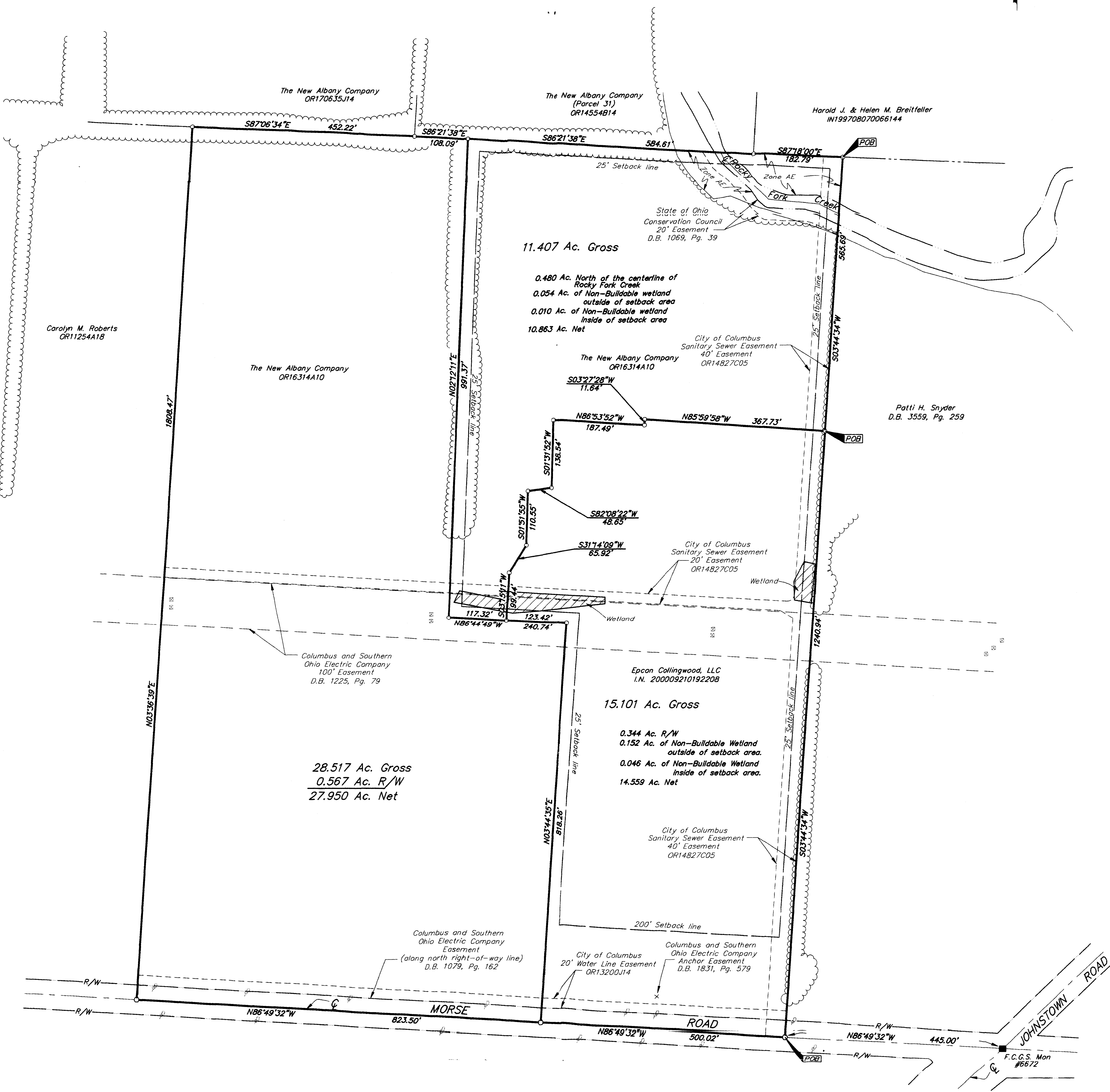


SURVEY OF ACREAGE PARCELS
SECTION 3, TOWNSHIP 2, RANGE 16
UNITED STATES MILITARY LANDS
CITY OF COLUMBUS, FRANKLIN COUNTY, OHIO



According to the Federal Emergency Management Agency's Flood Insurance Rate Maps (dated August 2, 1995), the subject parcel shown hereon lies within Zone AE (areas inundated by 100-year flood) and Zone X (areas determined to be outside 500-year flood plain), Community Panel No. 39049C0186 and 39049C190.

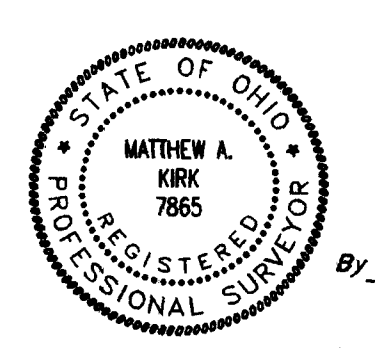
LEGEND	
	= Power Pole
	= Electric Tower
	= Tree Line

UTILITY STATEMENT:
 The utilities shown hereon have been located from field survey information and existing drawings. The surveyor makes no guarantee that the utilities shown comprise all such utilities in the area, either in service or abandoned. The surveyor further does not warrant that the utilities shown are in the exact location indicated although he does certify that they are located as accurately as possible from information available.

CERTIFICATION:
 Stewart Title Guaranty Company (Commitment No. 120001346)
 Chicago Title Insurance Company (Commitment No. 20160211)
 To: Chicago Title Insurance Company, Epcon Collingwood, LLC,
 Fifth Third Bank, Central Ohio, The New Albany Company, LLC
 and Stewart Title Guaranty Company.

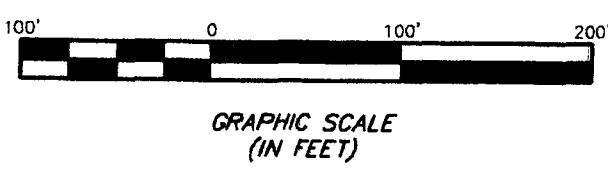
This is to certify, to the best of my knowledge and belief, that this map and the survey on which it is based were made in accordance with "Minimum Standard Detail Requirements for ALTA, ACSM and NSPS in 1999; and includes items 1, 3, 4, 11 & 13 of Table A thereof, and pursuant to the Accuracy Standards (as adapted by ALTA and ACSM and in effect on the date of this certification) of an Urban Survey.

SURVEYED & PREPARED BY
EMT
 CONSULTING ENGINEERS & SURVEYORS
 170 MILL STREET
 GAHANNA, OHIO 43230
 (614) 471-5150



By *Matthew A. Kirk*
 Professional Surveyor No. 7865
 SCALE: 1" = 100'
 REVISED
 MAY 19, 2000
 SEPTEMBER 15, 2000
 SEPTEMBER 19, 2001

- = MON. FND.
 - = I.P. FND.
 - = I.P. SET
 - = MAG. NAIL FND.
 - = MAG. NAIL SET
 - ▲ = R.R. SPK. FND.
 - ▲ = R.R. SPK. SET
 - = P.K. NAIL FND.
- I.P.S. Set are 1 3/16" I.D. Iron pipe w/ cap inscribed EMT.



BASIS OF BEARINGS: Bearings are based on the Ohio State Plane Coordinate System as per NAD83. Control for bearings was from coordinates of monuments 6672 & 6623, having a bearing of North 86°49'32" West, between said monuments established by the Franklin County Engineering Department, using Global Positioning System procedures and equipment.

D:\PROJECTS\20000672.01\DWG\006720.DWG - 0 XREFS - PLOTTED BY JMC/CFM - August 01, 2000 - 10:03 AM