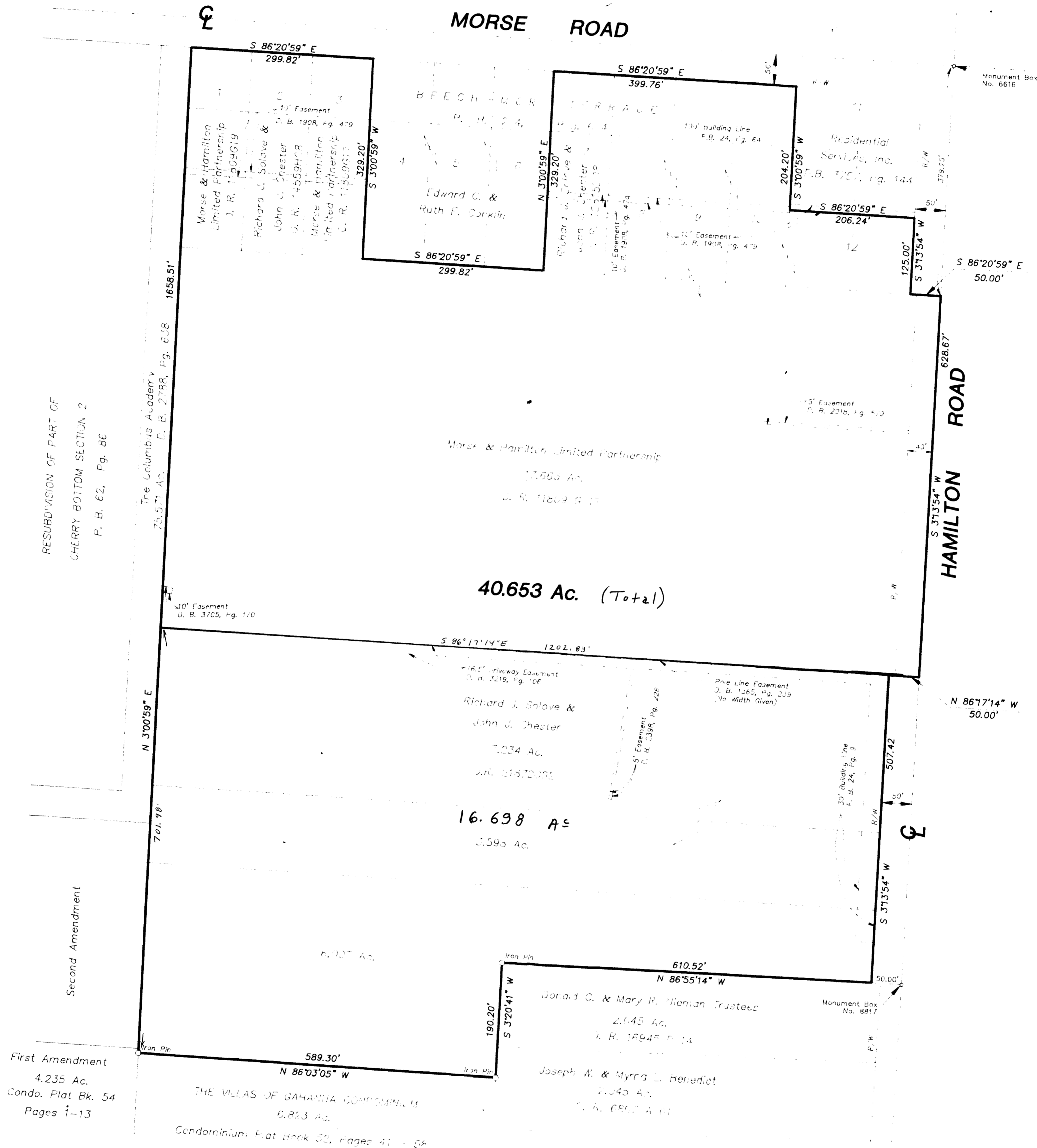


SURVEY OF ACREAGE PARCELS
 LOCATED IN QUARTER TOWNSHIP 1, TOWNSHIP 1, RANGE 17,
 UNITED STATES MILITARY LANDS
 CITY OF GAHANNA, FRANKLIN COUNTY, OHIO



RESUBDIVISION OF PART OF
 CHERRY BOTTOM SECTION 2
 P. B. 62, Pg. 86

The Columbus Academy
 73.571 Ac. C. B. 275R, Pg. 62B 1658.51'

10' Easement
 U. B. 370S, Pg. 170

Richard J. Solove &
 John W. Chester
 2.234 Ac.
 2.096 Ac.

16.698 Ac.

2.145 Ac.
 Dorad C. & Mary R. Nieman Trustee
 J. R. 1694F, Pg. 14

Joseph W. & Myra L. Benedict
 2.043 Ac.
 C. R. 6907, Pg. 41

THE VILLAGES OF GAHANNA CONDOMINIUM
 6.223 Ac.
 Condominium Plat Book 32, Pages 41 - 64

First Amendment
 4.235 Ac.
 Condo. Plat Bk. 54
 Pages 1-13

Second Amendment

Surveyed & Plotted
 By
EVANS, MECHWART, HAMBLETON, & TILTON INC.
 CONSULTING ENGINEERS AND SURVEYORS
 170 MILL STREET
 GAHANNA, OHIO 43230
 614/471-5150

NOTES:

Bearings are based on The Ohio State Plane Coordinate System as per NA083. Control for bearings was from coordinates of monuments established by the Franklin County Engineering Department, using Global Positioning System procedures and equipment.

Blanket Easement granted to Columbus Railway Power & Light Company of record in Deed Book 958, Page 20, for transmission line along Morse Road and Hamilton Road.

Restrictions of record in Deed Book 2795, Page 428, have expired.

Tract is subject to a repurchase agreement if construction of center has not begun by January 1, 1997, of record in Official Record 24057B11. This agreement overrides prior agreement of record in Official Record 15946F04.

Easement granted to Columbus and Southern Ohio Electric Company of record in Deed Book 1622, Page 258, does not apply to subject tract.

By *Thomas D. Sibbald*
 Thomas D. Sibbald
 Registered Surveyor No. 590c
 SCALE 1" = 100' MAY 3, 1994

GRAPHIC SCALE 1" = 100'

