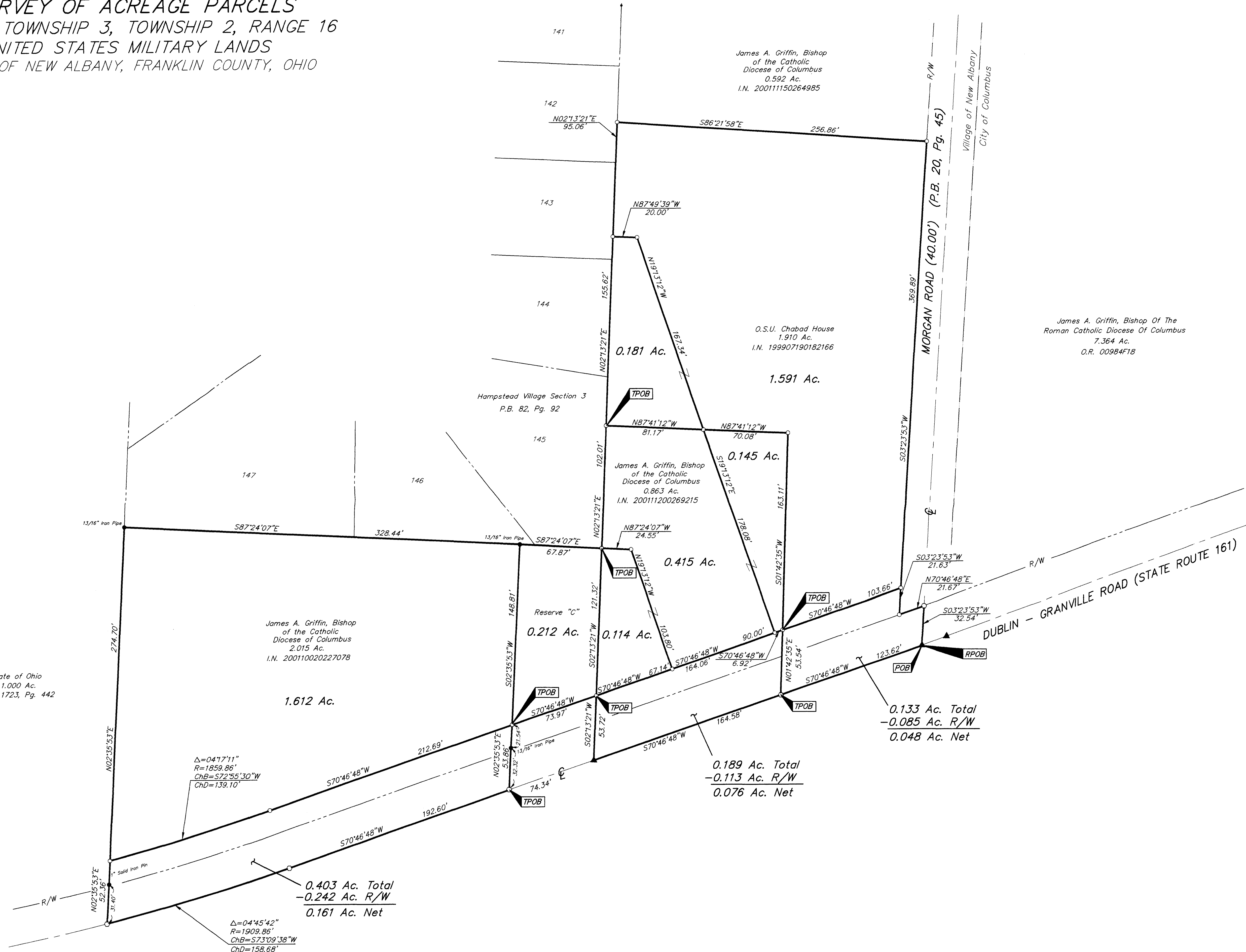


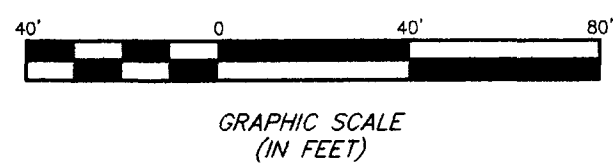
SURVEY OF ACREAGE PARCELS
 QUARTER TOWNSHIP 3, TOWNSHIP 2, RANGE 16
 UNITED STATES MILITARY LANDS
 VILLAGE OF NEW ALBANY, FRANKLIN COUNTY, OHIO

State of Ohio
 1,000 Ac.
 D.B. 1723, Pg. 442



- = MON. FND.
- = I.P. FND.
- = I.P. SET
- = MAG. NAIL FND.
- = MAG. NAIL SET
- ▲ = R.R. SPK. FND.
- ▲ = R.R. SPK. SET
- = P.K. NAIL FND.

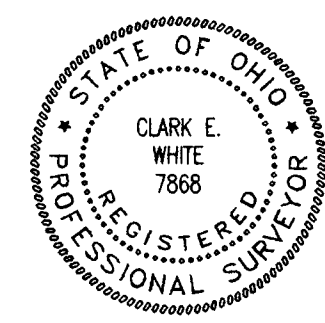
I.P.S. Set are 13/16" I.D. Iron pipe w/ cap inscribed EMHT INC



$\Delta = 04^{\circ}17'11''$
 $R = 1859.86'$
 $ChB = S72^{\circ}55'30''W$
 $ChD = 139.10'$

$\Delta = 04^{\circ}45'42''$
 $R = 1909.86'$
 $ChB = S73^{\circ}09'38''W$
 $ChD = 158.68'$

BASIS OF BEARINGS: Bearings are based on the Ohio State Plane Coordinate System as per NAD83. Control for bearings was from coordinates of monuments Frank 78 and 178, having a bearing of North 83°52'34" East, established by the Franklin County Engineering Department, using Global Positioning System procedures and equipment.



SURVEYED & PREPARED BY
EMHT INC.
 CONSULTING ENGINEERS & SURVEYORS
 170 MILL STREET
 GAHANNA, OHIO 43230
 (614) 471-5150

By *Clark E. White*
 Professional Surveyor No. 7888

SCALE: 1" = 40'
 REVISED MARCH 4, 2002
 MARCH 18, 2002

C:\PROJECT\20011016.01\DWG\11016bv1.dwg - 0 XREFS - PLOTTED BY TEBAM - March 04, 2002 - 2:11 PM