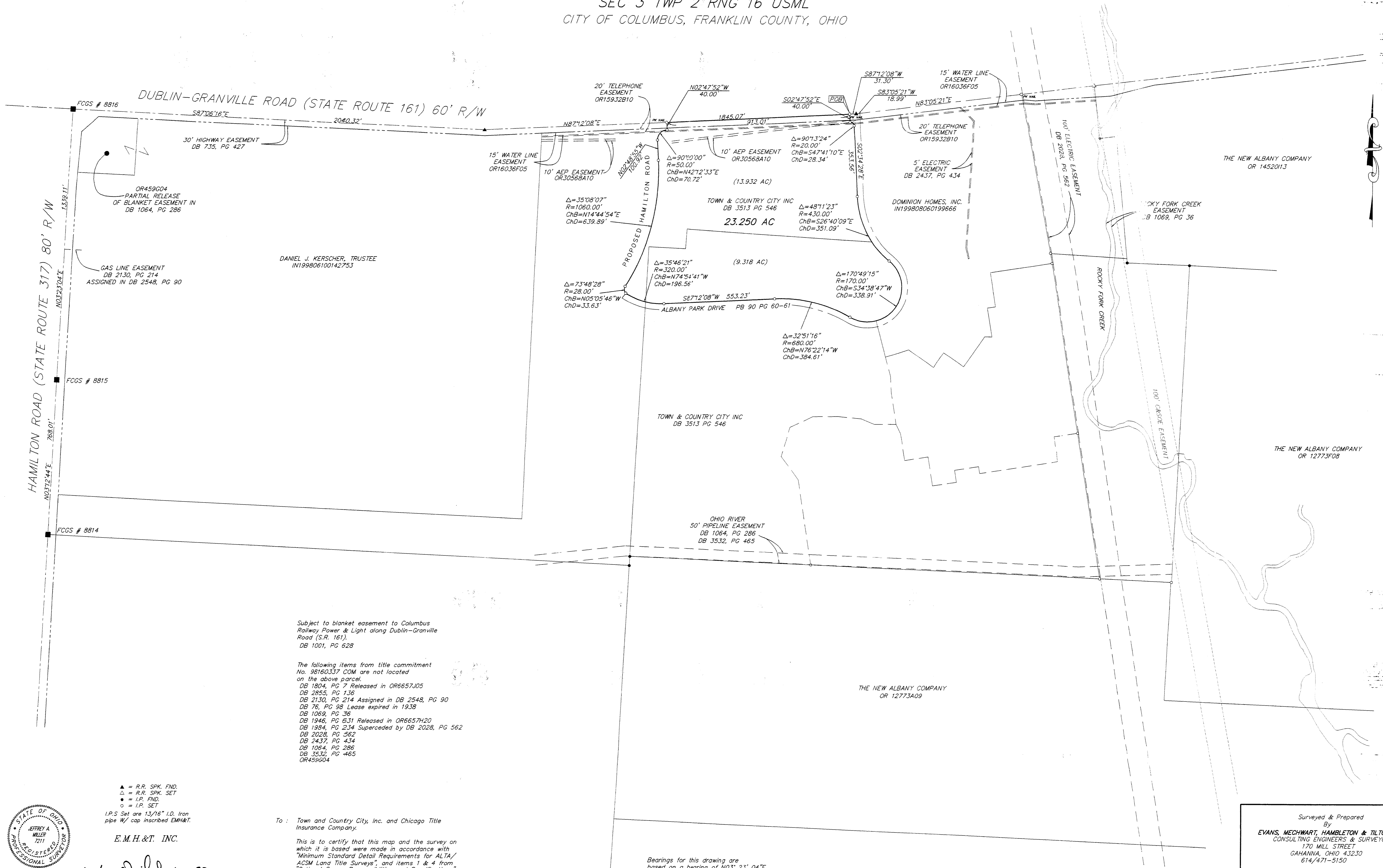


SURVEY OF ACREAGE PARCELS
SEC 3 TWP 2ND RNG 16 USML
CITY OF COLUMBUS, FRANKLIN COUNTY, OHIO



Subject to blanket easement to Columbus Railway Power & Light along Dublin-Granville Road (S.R. 161), DB 1001, PG 628

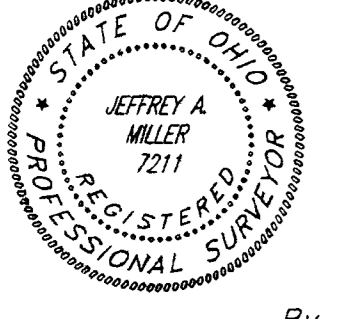
The following items from title commitment No. 98160337 COM are not located on the above parcel:
 DB 1804, PG 7 Released in OR6657J05
 DB 2855, PG 136
 DB 2130, PG 214 Assigned in DB 2548, PG 90
 DB 76, PG 98 Lease expired in 1938
 DB 1069, PG 36
 DB 1946, PG 631 Released in OR6657H20
 DB 1994, PG 234 Superseded by DB 2028, PG 562
 DB 2028, PG 562
 DB 2437, PG 434
 DB 1064, PG 286
 DB 3532, PG 465
 OR45604

▲ = R.R. SPK. FND.
 △ = R.R. SPK. SET
 ● = I.P. FND.
 ○ = I.P. SET
 I.P.S. Set are 1 3/16" I.D. Iron pipe w/ cap inscribed EMH&T.

E.M.H.&T. INC.
 By *Jerry A. Miller* 4-20-99
 Professional Surveyor No. 7211

To : Town and Country City, Inc. and Chicago Title Insurance Company.
 This is to certify that this map and the survey on which it is based were made in accordance with "Minimum Standard Detail Requirements for ALTA/ACSM Land Title Surveys", and items 1 & 4 from "Optional Survey Responsibilities and Specifications" jointly established and adopted by ALTA, ACSM and NSPS in 1997.

Bearings for this drawing are based on a bearing of N03° 23' 04"E for the centerline of Hamilton Road between F.C.G.S. Monuments 8815 & 8816



Surveyed & Prepared By
EVANS, MECHWART, HABLETON & TILTON INC.
 CONSULTING ENGINEERS & SURVEYORS
 170 MILL STREET
 GAHANNA, OHIO 43230
 614/471-5150

SCALE: 1" = 200' APRIL 20, 1999