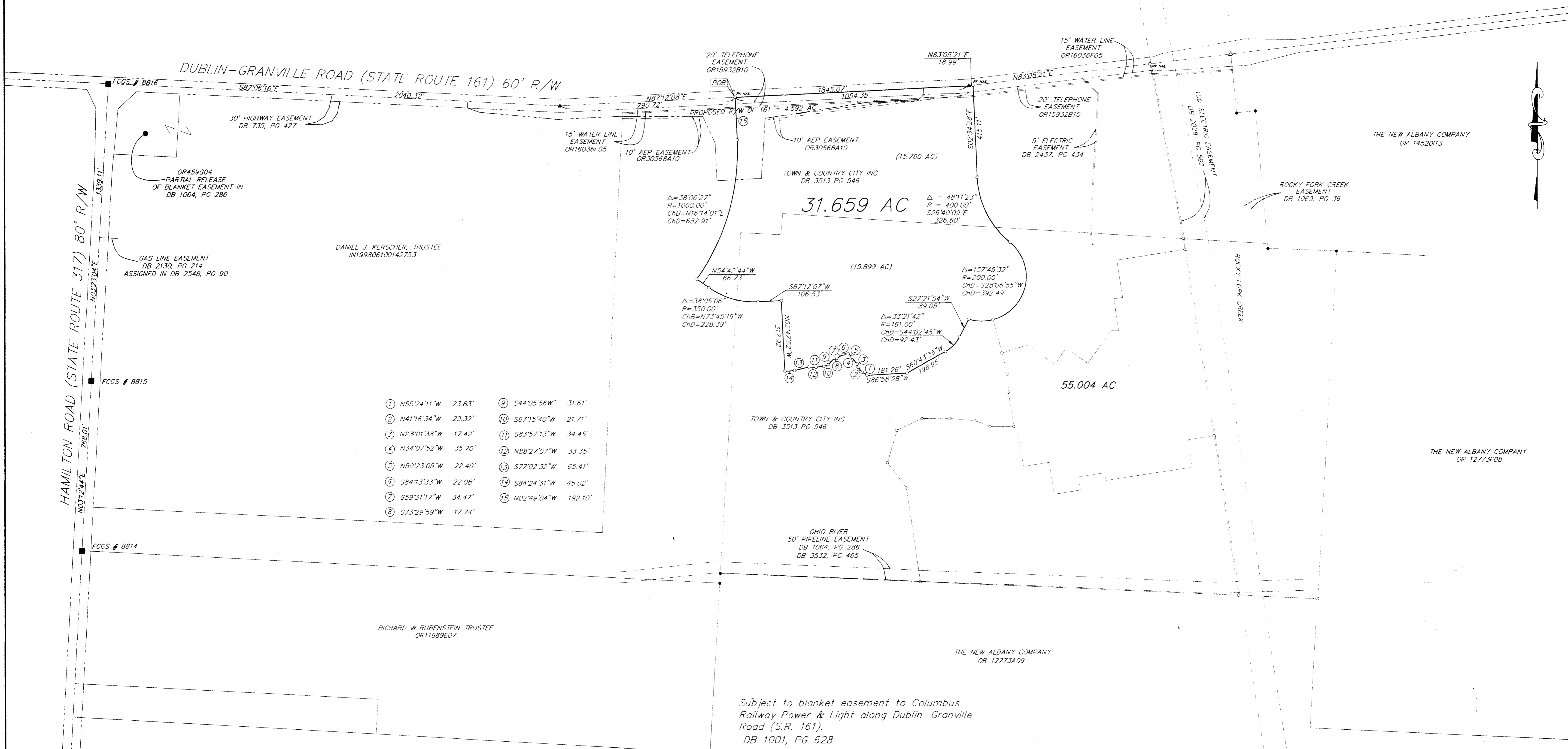


**SURVEY OF ACREAGE PARCELS**  
**SEC 3 TWP 2 RNG 16 USML**  
**CITY OF COLUMBUS, FRANKLIN COUNTY, OHIO**



- |                      |                       |
|----------------------|-----------------------|
| ① N55°24'11"W 23.83' | ⑨ S44°05'56"W 31.61'  |
| ② N41°16'34"W 29.32' | ⑩ S67°15'40"W 21.71'  |
| ③ N23°01'38"W 17.42' | ⑪ S83°57'13"W 34.45'  |
| ④ N34°07'52"W 35.70' | ⑫ N88°27'07"W 33.35'  |
| ⑤ N50°23'05"W 22.40' | ⑬ S77°02'32"W 65.41'  |
| ⑥ S84°13'33"W 22.08' | ⑭ S84°24'31"W 45.02'  |
| ⑦ S59°31'17"W 34.47' | ⑮ N02°49'04"W 192.10' |
| ⑧ S73°29'59"W 17.74' |                       |

Subject to blanket easement to Columbus Railway Power & Light along Dublin-Granville Road (S.R. 161).  
 DB 1001, PG 628

The following items from title commitment No. 98160337 COM are not located on the above parcel.  
 DB 1804, PG 7 Released in OR6657J05  
 DB 2855, PG 136  
 DB 2130, PG 214 Assigned in DB 2548, PG 90  
 DB 76, PG 98 Lease expired in 1938  
 DB 1069, PG 36  
 DB 1946, PG 631 Released in OR6657H20  
 DB 1984, PG 234 Superceded by DB 2028, PG 562  
 DB 2028, PG 562  
 DB 2437, PG 434  
 DB 1064, PG 286  
 DB 3532, PG 465  
 OR459G04

To : Town and Country City, Inc. and Chicago Title Insurance Company.

This is to certify that this map and the survey on which it is based were made in accordance with "Minimum Standard Detail Requirements for ALTA/ACSM Land Title Surveys", and items 1 & 4 from "Optional Survey Responsibilities and Specifications" jointly established and adopted by ALTA, ACSM and NSPS in 1997.

Bearings for this drawing are based on a bearing of N03° 23' 04"E for the centerline of Hamilton Road between F.C.G.S. Monuments 8815 & 8816



By *Jeffrey A. Miller*  
 Professional Surveyor No. 7211

▲ = R.R. SPK. FND.  
 △ = R.R. SPK. SET  
 ● = I.P. FND.  
 ○ = I.P. SET  
 I.P.S. Set are 1 3/16" I.D. Iron pipe W/ cop inscribed EMH&T.  
**E.M.H.&T. INC.**

Surveyed & Prepared By  
**EVANS, MECHWART, HAMBLETON & TILTON INC.**  
 CONSULTING ENGINEERS & SURVEYORS  
 170 MILL STREET  
 CAHANNA, OHIO 43230  
 614/471-5150

SCALE: 1" = 200' AUGUST 5, 1998