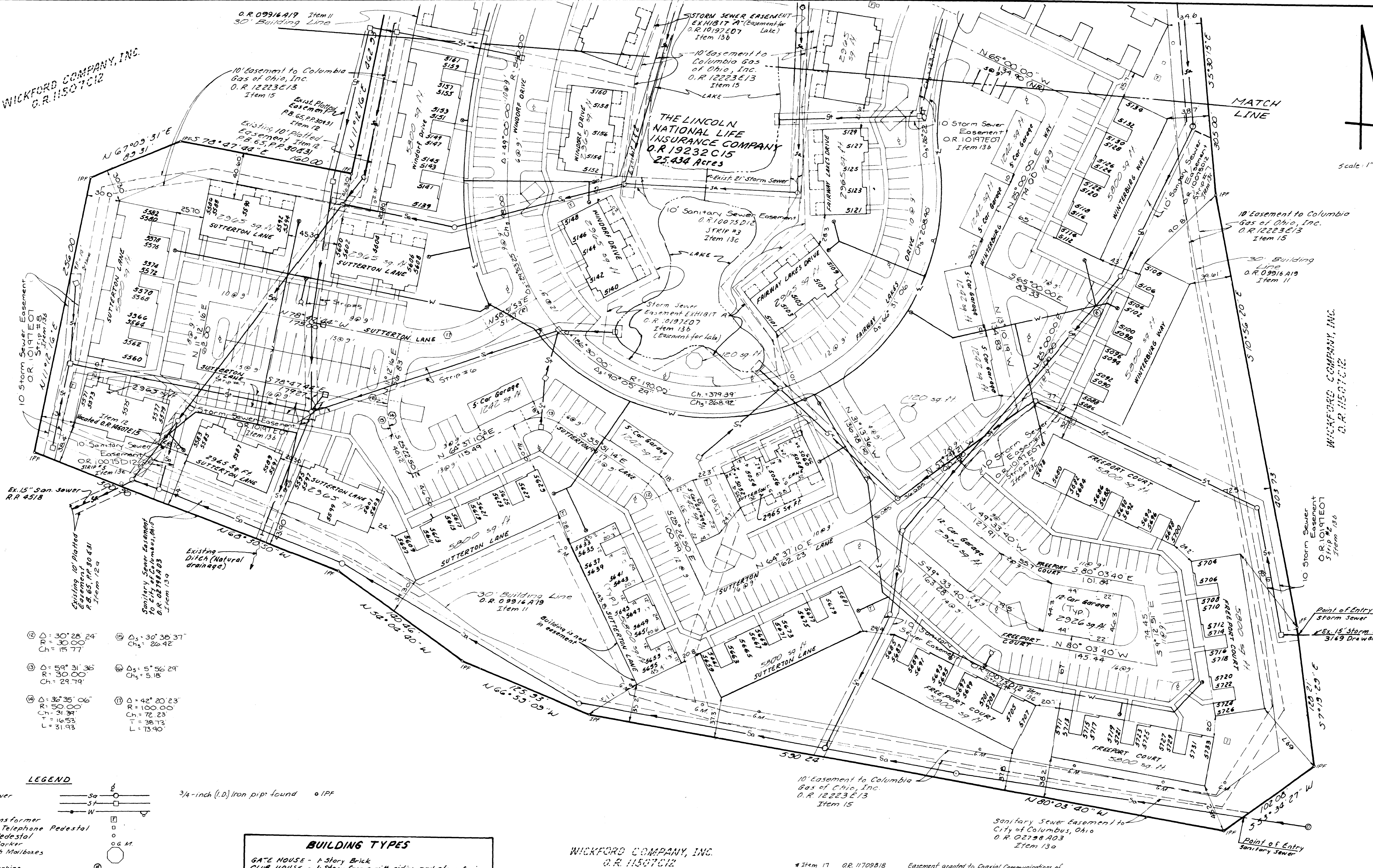
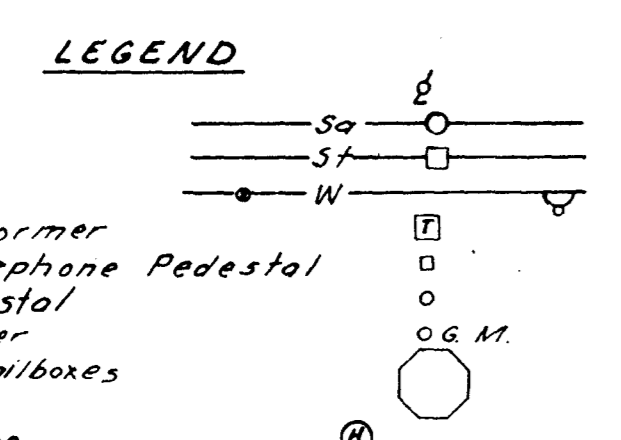


WICKFORD COMPANY, INC.
O.R. 11507012

Scale: 1"=40'



- (A) Δ = 30° 28' 24" Ch = 30.00
- (B) Δ = 59° 31' 36" Ch = 30.00
- (C) Δ = 36° 35' 06" Ch = 50.00
- (D) Δ = 30° 36' 37" Ch = 26.42
- (E) Δ = 5° 56' 29" Ch = 5.18
- (F) Δ = 42° 20' 23" Ch = 100.00



BUILDING TYPES

GATE HOUSE - 1-Story Brick
 CLUB HOUSE - 1-Story Frame with siding and stone facing
 GARAGES - 1-Story Frame
 APARTMENTS - 2-Story Frame with siding and stone facing
 5800 Sq. Ft. (12 Units) - 20 Buildings
 2965 Sq. Ft. (5 Units) - 10 Buildings

WICKFORD COMPANY, INC.
O.R. 11507012

EASEMENT REFERENCE

The items shown on this survey of the 25.434 acre tract of land correspond to those items with the same numbers that are shown in SCHEDULE B-SECTION II of the LAWYER'S TITLE INSURANCE CORPORATION Commitment No. 00-2303-43.

- Item 11 O.R. 09916A19; Conditions, Restrictions and Building Setback Requirements, as shown hereon.
- Item 12 P.B. 65, PP. 30 & 31; Easements and Setbacks as shown on the recorded subdivision plat of "THE GLADE SECTION 2", as shown hereon.
- Item 12 O.R. 14607E15; Release of sanitary sewer easements by the City of Columbus, Ohio, as shown hereon.
- Item 13a O.R. 02798A03; Sanitary sewer easement granted to the City of Columbus, Ohio, as shown hereon.

- *Item 17 O.R. 1709B18; Easement granted to Coaxial Communications of Central Ohio (Blanket Easement).
- Item 13b O.R. 10197E07; Eight 10' foot wide storm sewer easements granted to the City of Columbus, Ohio, as shown hereon.
- Item 13c O.R. 10075D12; Seven 10' foot wide sanitary sewer easements granted to the City of Columbus, Ohio, as shown hereon.
- *Item 14 O.R. 11015118; 10' foot wide Columbus Southern Power Company easement. The easement centerline shall be the underground cable and/or poles as installed, (Blanket Easement).
- Item 15 O.R. 12223E13; 10' foot wide Columbia Gas of Ohio, Inc. gas pipeline easement, as shown hereon.
- *Item 16 O.R. 11097A11; 10' foot wide The Ohio Bell Telephone Company easement. The centerline of the easement shall be the same as the location of cable as it is initially placed, (Blanket Easement).

ALTA SURVEY OF 25.434 ACRES OF LAND LOCATED SOUTH OF LONGFLE ROAD AND WEST OF ULRY ROAD, IN THE CITY OF COLUMBUS, COUNTY OF FRANKLIN, STATE OF OHIO

FAIRWAY LAKES AT LITTLE TURTLE
 Bauer, Davidson & Merchant, Inc.
 Consulting Engineers
 255 Green Meadows Drive South
 Westerville, Ohio 43081
 Phone: (614) 846-3393

Rev. November 20, 2000
 Rev. November 16, 2000
 November 7, 2000