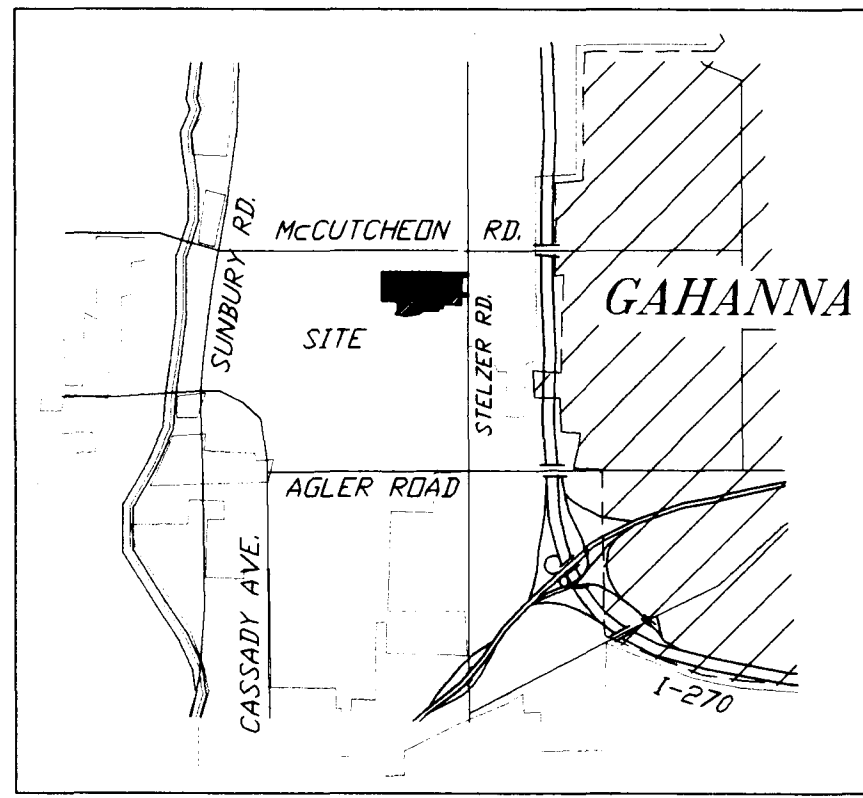
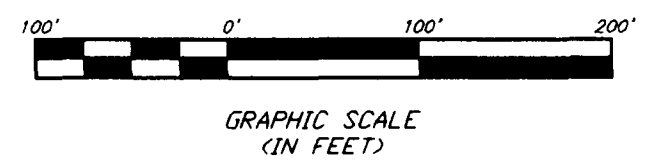


SURVEY OF ACREAGE PARCEL
QUARTER TOWNSHIP 2, TOWNSHIP 1, RANGE 17
UNITED STATES MILITARY LANDS
CITY OF COLUMBUS, FRANKLIN COUNTY, OHIO



(NOT TO SCALE)

McCutcheon Road
 FCGS 7778



The following items from Title Commitment No. 9701333 do not apply to the subject parcel:
 D.B. 3377, Pg. 481
 I.N. 199812300336705

The following items from Title Commitment No. 9701333 could not be located from the description provided:
 M.V. 2, Pg. 503
 M.V. 5, Pg. 406

Assignment of the Ohio Fuel Gas Supply Company to Columbia Gas of Ohio
 D.B. 2548, Pg. 90

Columbus & Southern Ohio Electric Company
 Electric transmission easement along roadway
 D.B. 2540, Pg. 436

Columbus & Southern Ohio Electric Company
 Pole line easement along roadway
 D.B. 1078, Pg. 148

City of Columbus
 Wetlines easement along westerly roadway
 D.B. 3081, Pg. 238

Columbus & Southern Ohio Electric Company
 Electric easements within "Resubdivision of Somerset 1"
 (Unable to determine exact locations because of negligible description)
 D.B. 1078, Pg. 148

D.B. 3791,
 Pg. 403

George D. & Johanna C. Boston
 D.B. 3791, Pg. 406

Ralph W. Sr. & Carol A. Smithers
 O.R. 16605E06

Charles J. Snow Addition
 P.B. 25, Pg. 31

Jordan Estates
 P.B. 51, Pg. 113

Menthorn Williams
 O.R. 20448102

Abbott Laboratories
 O.R. 25378J10

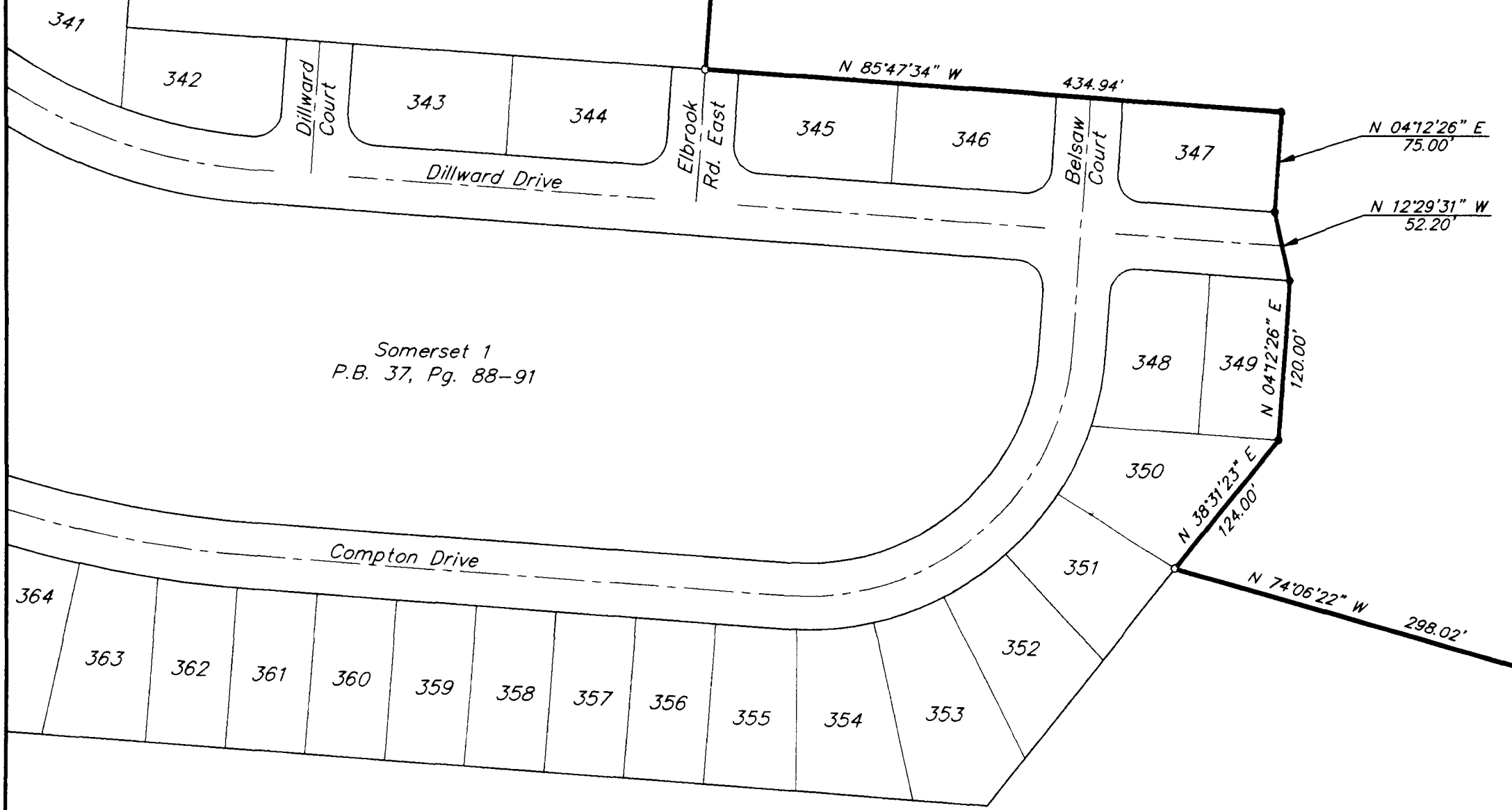
Said property is subject to Declaration of Protective Covenants of record in:
 M.R.V. 2673, Pg. 279
 Amended in O.R. 1481116
 M.R.V. 2673, Pg. 273
 Amended in O.R. 1481114

Vacation of portions of Somerset No. 3
 Somerset No. 4 & Somerset No. 6
 P.B. 90, Pg. 49

49.949 Ac.

David S. Gutridge
 Trustee of Bench Mark Land Trust
 O.R. 16546G03

Daniel Riedel
 I.N. 199808100201984



N 0412'26" E
 75.00'
 N 1229'31" W
 52.20'

N 0412'26" E
 72.00'

N 0412'26" E
 74.00'

N 74'06"22" W
 298.02'

S 83'26"38" W
 398.10'

N 85'47"34" W
 52.65'

N 85'47"34" W
 52.65'

City of Columbus
 5" Storm sewer easement
 D.B. 2890, Pg. 370

City of Columbus
 5" Electric Transmission Easements
 D.B. 2648, Pg. 226

City of Columbus
 5" Storm sewer easement
 D.B. 2890, Pg. 370

City of Columbus
 5" Storm sewer easement
 D.B. 2890, Pg. 370

City of Columbus
 5" Storm sewer easement
 D.B. 2890, Pg. 370

City of Columbus
 5" Storm sewer easement
 D.B. 2890, Pg. 370

City of Columbus
 5" Storm sewer easement
 D.B. 2890, Pg. 370

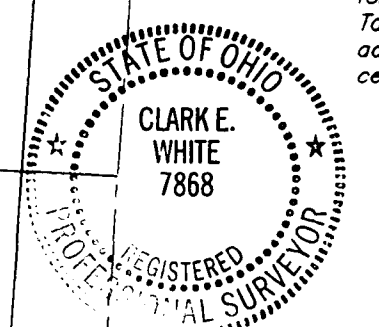
City of Columbus
 5" Storm sewer easement
 D.B. 2890, Pg. 370

City of Columbus
 5" Storm sewer easement
 D.B. 2890, Pg. 370

SURVEYED & PLATTED BY
EMT
 CONSULTING ENGINEERS & SURVEYORS
 170 MILL STREET
 GAHANNA, OHIO 43230
 (614) 471-5150

CERTIFICATION: (Commitment No. 9701333)
 To: Stewart Title Guaranty Company, Triangle Properties Inc. and Donald R. Kenney, Trustee

This is to certify that this map and the survey on which it is based were made in accordance with "Minimum Standard Detail Requirements for ALTA, ACSM and NSPS in 1997, and includes items 1-4 of Table A thereof, and pursuant to the Accuracy Standards (as adopted by ALTA and ACSM and in effect on the date of this certification) of an Urban Survey.



By **Clark E. White**
 Professional Surveyor No. 7868

SCALE: 1" = 100' APRIL 14, 1999

BASIS OF BEARINGS: Bearings are based on the Ohio State Plane Coordinate System as per NAD83. Control for bearings was from coordinates of monuments 777B & 885B, having a bearing of South 03°57'06" West, established by the Franklin County Engineering Department, using Global Positioning System procedures and equipment.

Columbus & Southern Ohio Electric Company
 Right-of-way for electric transmission within the easement lines upon the recorded plats identified as follows:

Somerset No. 3, P.B. 37, PP. 95-97
 Somerset No. 4, P.B. 37, PP. 98-101
 Resubdivision of Somerset No. 7, P.B. 35, Pg. 105

Recorded under D.B. 2648, Pg. 234

According to the Federal Emergency Management Agency's Flood Insurance Rate Map (dated August 2, 1995) the subject parcel shown hereon lies within Zone X (Area outside 500-year floodplain); Community Panel 39048C0170 G.