

PLAT OF ACREAGE PARCELS
 LOCATED IN QUARTER TOWNSHIP 2, TOWNSHIP 1, RANGE 17
 UNITED STATES MILITARY LANDS
 CITY OF COLUMBUS, FRANKLIN COUNTY, OHIO

Ruth Maddox
 32.286 Ac.
 D.B. 3751, Pg. 759

Adesta B Allison
 1.838 Ac.
 D.B. 2309, Pg. 318

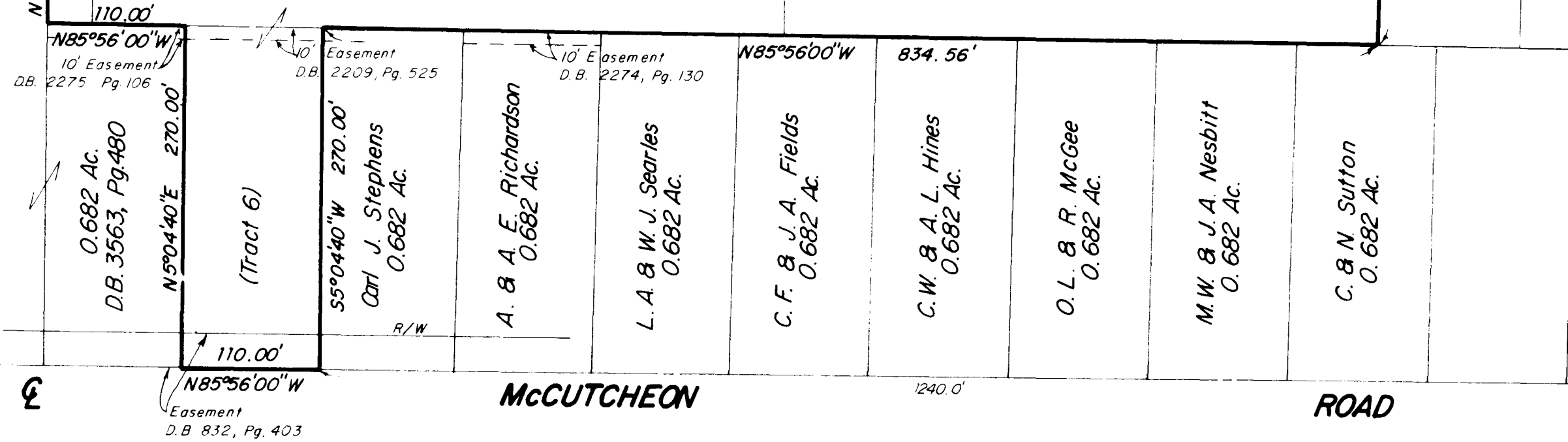
Nationwide Development Co
 21.083 Ac (total)
 O.R. 5320 HO1
 (Tract 4)

(Tract 3)

(Tract 5)

N85°56'00"W 518.00'
 The House of God, which is the Church of the living
 God, The pillar and ground of the Truth and without
 Controversy.
 3.00 Ac.
 D.B. 3530, Pg. 788

S5°04'40"W 604.40'
 St. Andrews United Methodist Church
 0.920 Ac.
 D.B. 3068,
 Pg. 14



3.179 Ac.
 D.B. 3751, Pg. 311

N 3°53'40"E 487.21'

S86°08'10"E 314.14'

S85°59'40"E 1115.42'

S87°28'00"E 154.40'

N4°28'30"E 110.67'

110.00'

N85°56'00"W 110.00'
 10' Easement
 D.B. 2275, Pg. 106

10' Easement
 D.B. 2209, Pg. 525

10' Easement
 D.B. 2274, Pg. 130

N85°56'00"W 834.56'

110.00'
 Easement
 D.B. 832, Pg. 403

MCCUTCHEON

1240.0'

ROAD

ROAD

STELZER

€

PREPARED BY
EVANS, MECHWART, HAMBLETON & TILTON, INC.

CONSULTING ENGINEERS & SURVEYORS
 170 MILL STREET GAHANNA, OHIO 43230
 PHONE (614) 471-5150

We hereby declare to all R.P. Limited Partnership, in this
 limited Partnership and Transfer Title, that this plat shows
 the location of the boundaries and easements and there are no
 encroachments across said boundaries, and that the parcels are
 located in the quarter township 2, township 1, range 17, city of
 Columbus, Franklin County, Ohio.

NOTE:

Easement of record in O.R. 5684-119 does
 not apply to subject tract.

By Thomas D. Sibbald
 Registered Surveyor No. 5908

SCALE: 1" = 100'

JULY 16, 1987
 REVISED AUGUST 8, 1987