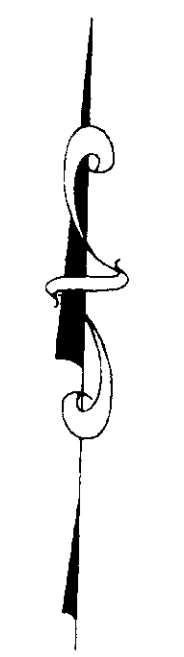
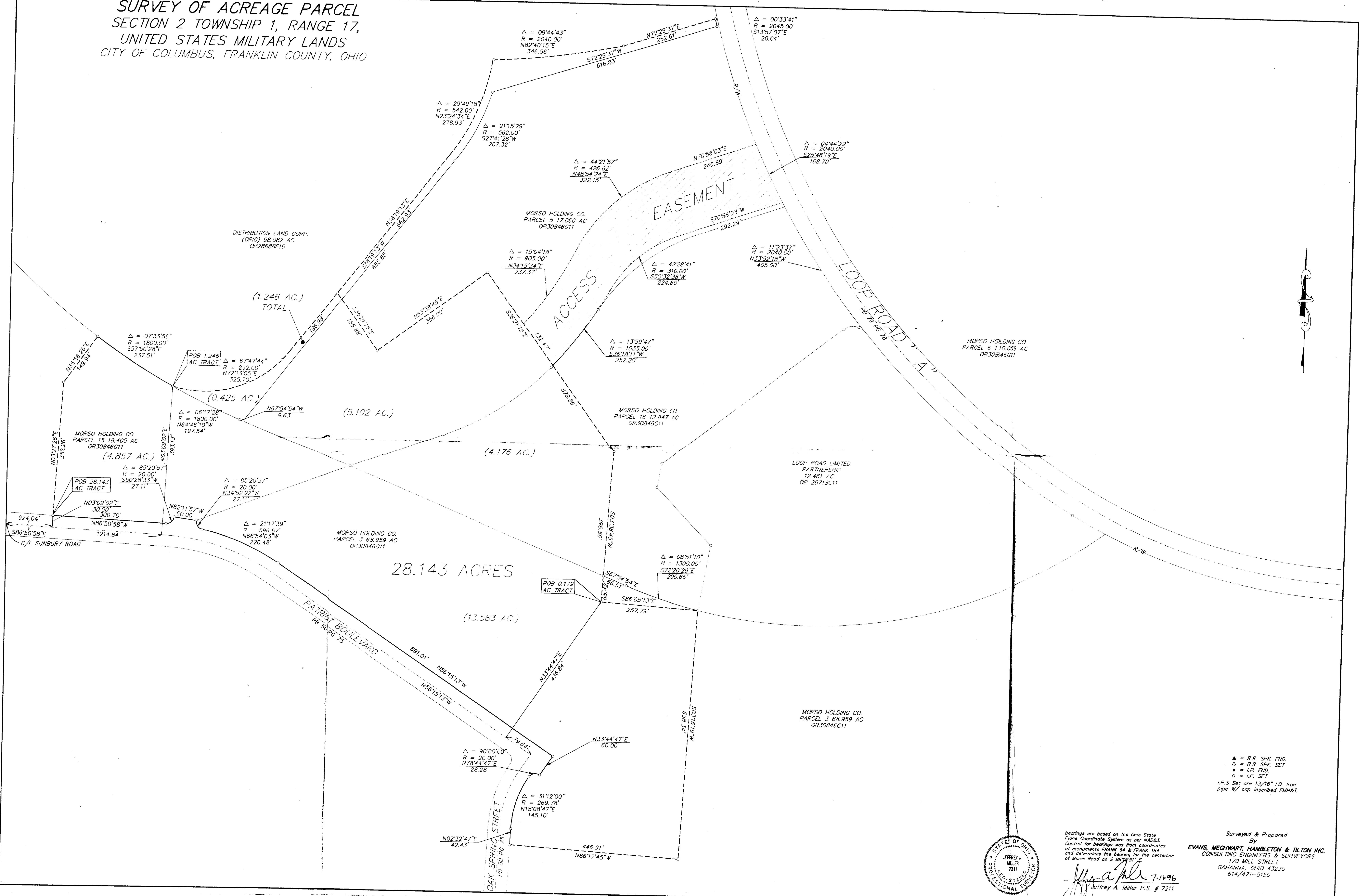
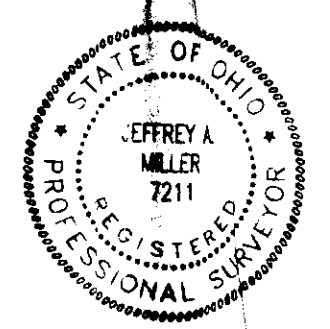


SURVEY OF ACREAGE PARCEL
SECTION 2 TOWNSHIP 1, RANGE 17,
UNITED STATES MILITARY LANDS
CITY OF COLUMBUS, FRANKLIN COUNTY, OHIO



▲ = R.R. SPK. FND.
 Δ = R.R. SPK. SET
 ● = I.P. FND.
 ○ = I.P. SET
 I.P.S. Set are 1 3/16" I.D. Iron pipe w/ cap inscribed EMH&T.



Bearings are based on the Ohio State Plane Coordinate System as per NAD83. Control for bearings was from coordinates of monuments FRANK 64 & FRANK 104 and determines the bearing for the centerline of Morse Road as S 86° 15' 51\"/>

Jeffrey A. Miller 7-11-96
 Jeffrey A. Miller P.S. # 7211

Surveyed & Prepared By
EVANS, MECHWART, HAMBLETON & TILTON INC.
 CONSULTING ENGINEERS & SURVEYORS
 170 MILL STREET
 GAHANNA, OHIO 43230
 614/471-5150