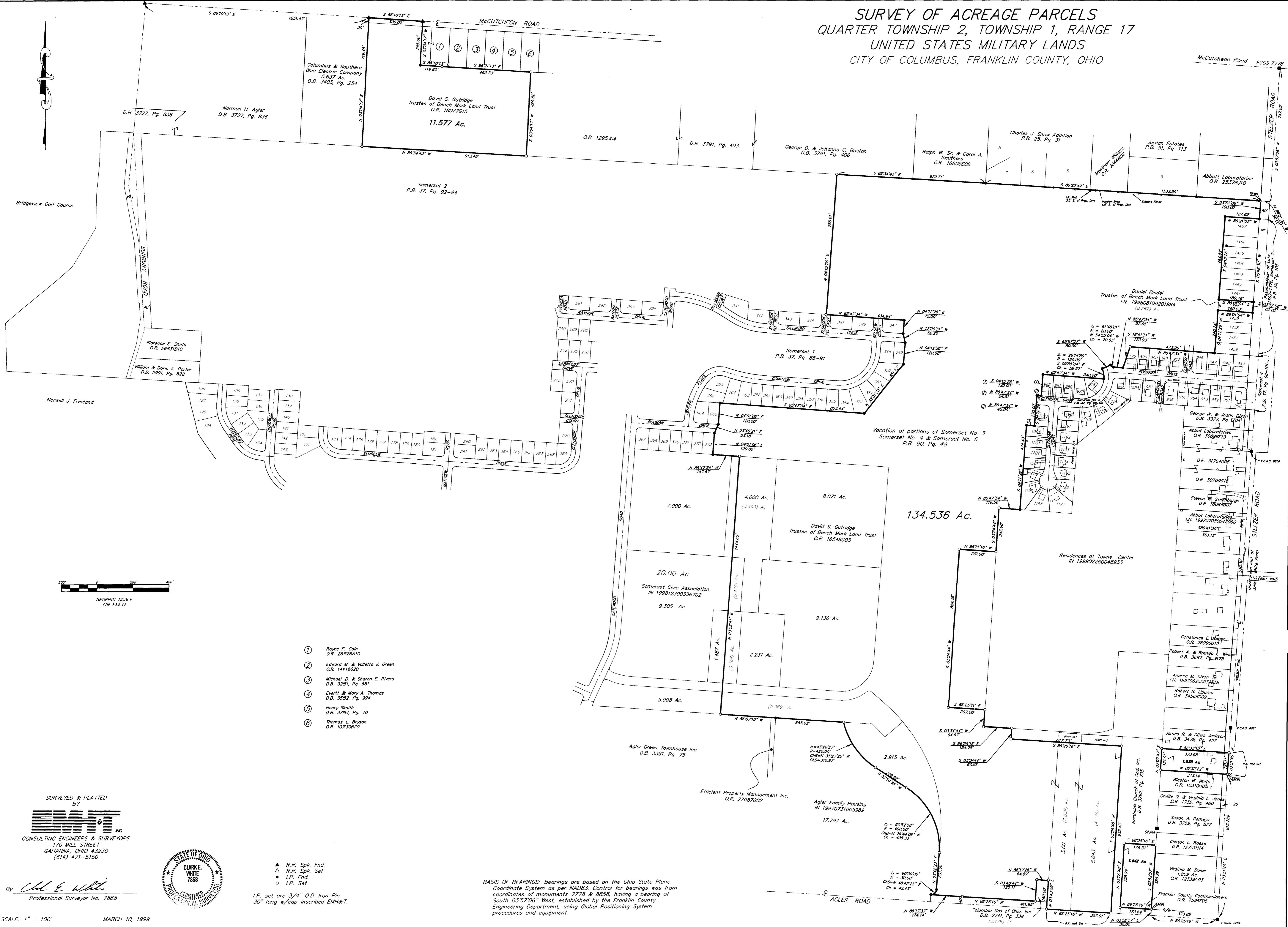


SURVEY OF ACREAGE PARCELS
QUARTER TOWNSHIP 2, TOWNSHIP 1, RANGE 17
UNITED STATES MILITARY LANDS
CITY OF COLUMBUS, FRANKLIN COUNTY, OHIO



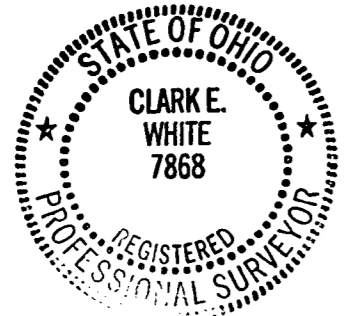
- ① Royce F. Cain
O.R. 26526A10
- ② Edward B. & Valletta J. Green
O.R. 14118020
- ③ Michael D. & Sharon E. Rivers
D.B. 3281, Pg. 881
- ④ Evertt & Mary A. Thomas
D.B. 3552, Pg. 994
- ⑤ Henry Smith
D.B. 3794, Pg. 70
- ⑥ Thomas L. Bryson
O.R. 10730620

- ▲ R.R. Spk. Fnd.
- △ R.R. Spk. Set
- I.P. Fnd.
- I.P. Set

I.P. set are 3/4" O.D. Iron Pin
 30" long w/cap inscribed EMH&T.

BASIS OF BEARINGS: Bearings are based on the Ohio State Plane Coordinate System as per NAD83. Control for bearings was from coordinates of monuments 7778 & 8858, having a bearing of South 03°57'06" West, established by the Franklin County Engineering Department, using Global Positioning System procedures and equipment.

SURVEYED & PLATTED BY
EMH&T
 CONSULTING ENGINEERS & SURVEYORS
 170 MILL STREET
 GAHANNA, OHIO 43230
 (614) 471-5150



By Clark E. White
 Professional Surveyor No. 7868