

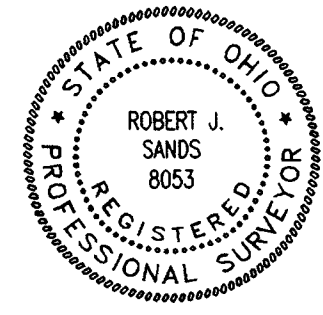
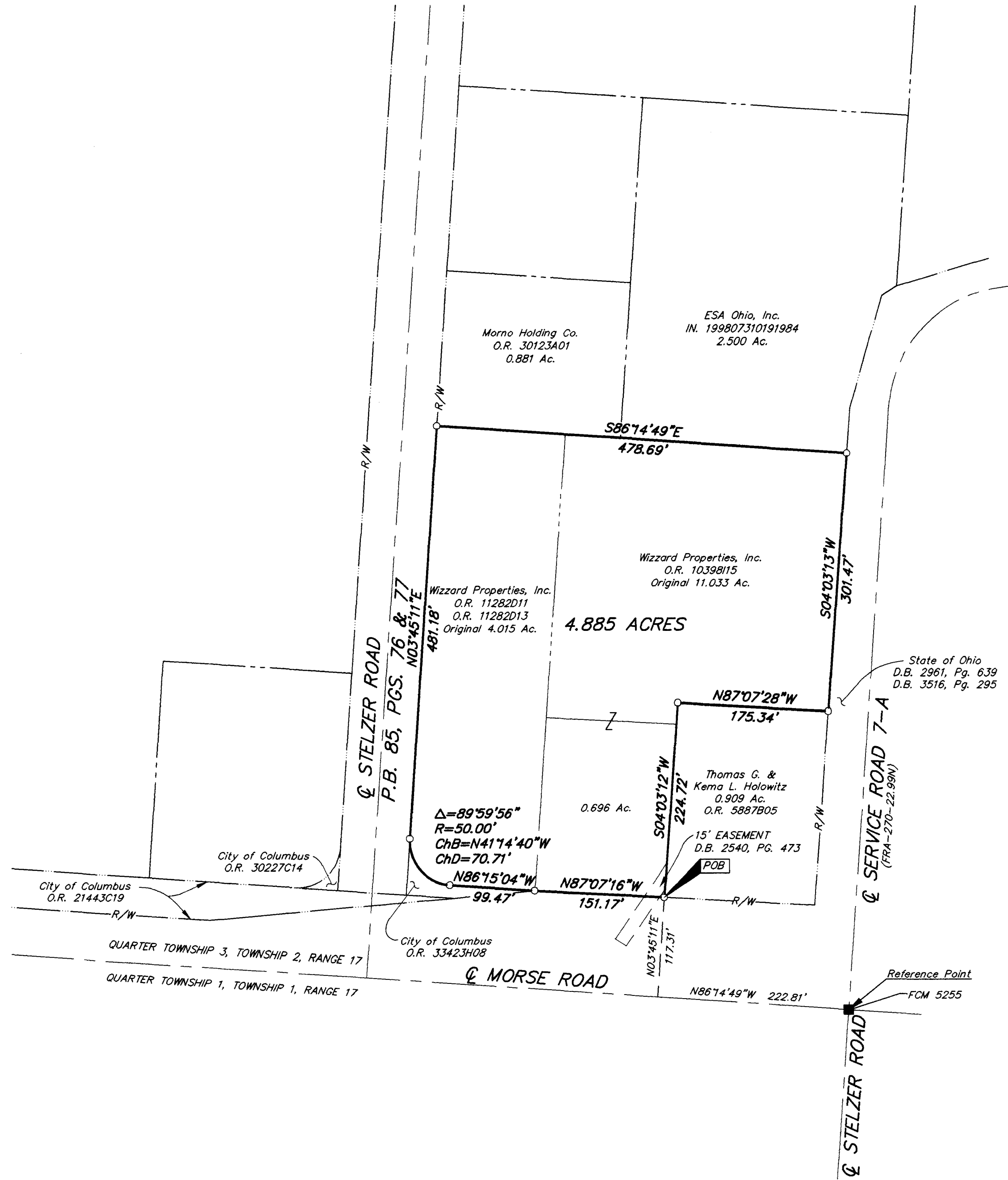
SURVEY OF ACREAGE PARCEL
QUARTER TOWNSHIP 3, TOWNSHIP 2, RANGE 17
UNITED STATES MILITARY LANDS
CITY OF COLUMBUS, FRANKLIN COUNTY, OHIO

- = MON. FND.
- = I.P. FND.
- = I.P. SET
- = MAG. NAIL FND.
- = MAG. NAIL SET
- ▲ = R.R. SPK. FND.
- △ = R.R. SPK. SET
- ◆ = P.K. NAIL FND.

I.P.S Set are 13/16" I.D. Iron pipe w/ cap inscribed EMH&T, Inc.



GRAPHIC SCALE
(IN FEET)



By *Robert J. Sands* 6-20-01
 Professional Surveyor No. 8053

BASIS OF BEARINGS:
 THE BEARINGS SHOWN HEREON ARE BASED ON THE BEARING OF NORTH 86°14'49"
 WEST FOR THE CENTERLINE OF MORSE ROAD, WEST OF STELZER ROAD, OF RECORD IN
 O.R. 24217 G08, RECORDS OF THE RECORDER'S OFFICE, FRANKLIN COUNTY, OHIO.

Surveyed & Prepared
 By
EVANS, MECHWART, HAMBLETON & TILTON INC.
 CONSULTING ENGINEERS & SURVEYORS
 170 MILL STREET
 GAHANNA, OHIO 43230
 614/471-5150

SCALE: 1" = 100'
 JUNE 18, 2001
 REVISED JUNE 19, 2001

C:\PROJECT\2001\0804.01\DWG\10804BND1.DWG - 0 XREFS - PLOTTED BY RSANDS - JUNE 18, 2001 - 6:25 AM