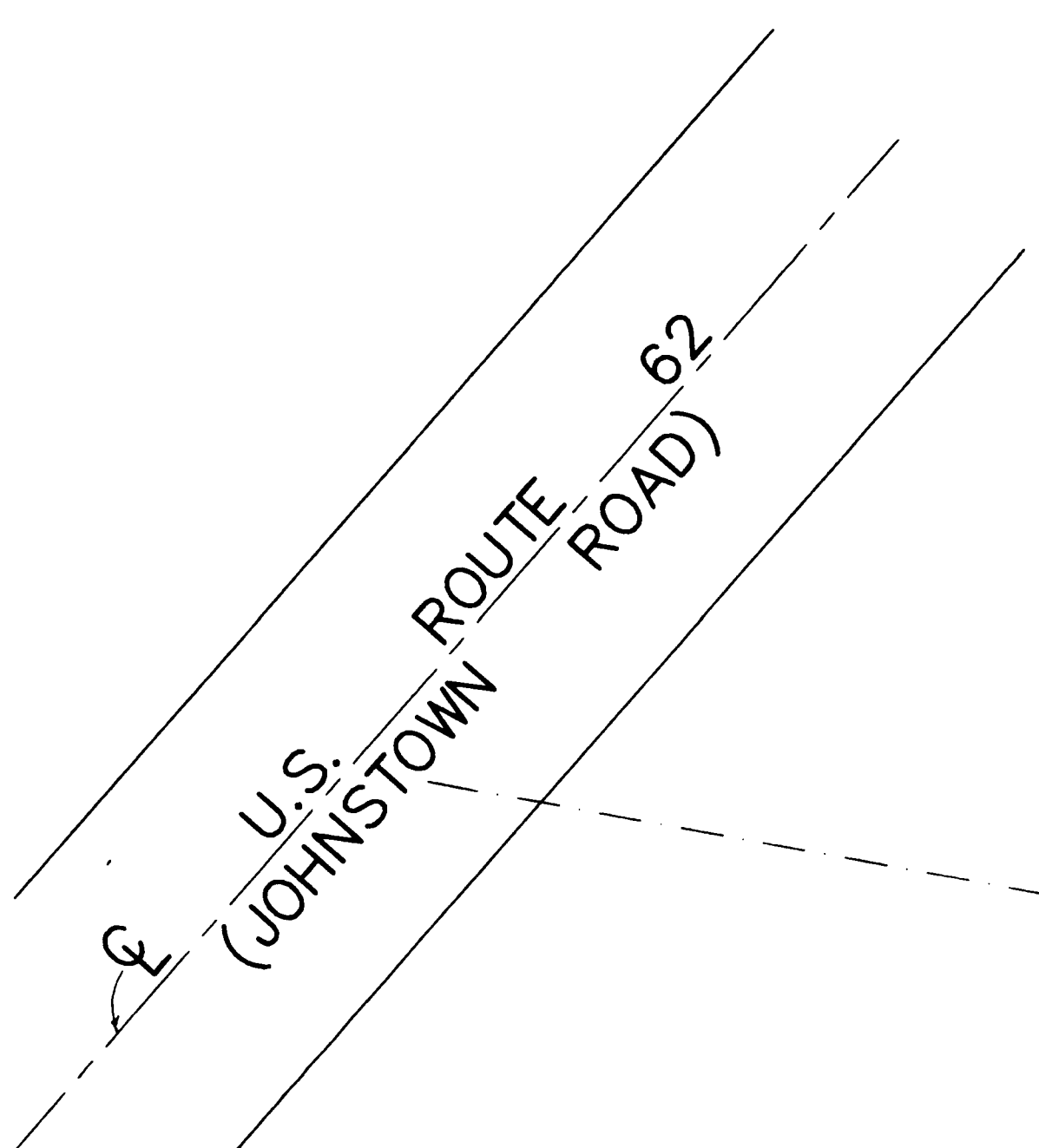


SURVEY OF 0.080 ACRE TRACT
 Located In
 Quarter Township 3, Township 2, Range 16
 United States Military Lands
 Village Of New Albany, Franklin County, Ohio

The New Albany Company Limited Partnership
 O. R. 16314 A 12



M. L. Whitehead
 1.357 Ac.

0.610 Ac.

Agnes M. Campbell
 2.964 Ac.
 D.B. 2627, Pg. 296

PREPARED BY
EVANS, MECHWART, HAMBLETON & TILTON, INC.
 CONSULTING ENGINEERS & SURVEYORS
 170 MILL STREET
 GAHANNA, OHIO 43230
 (614) 471-5150

By *James R. Hill*
 Professional Surveyor No. 6919

IRON PIN
 MAY 10, 1993
 REVISED APRIL 27, 1994

SCALE: 1" = 30'

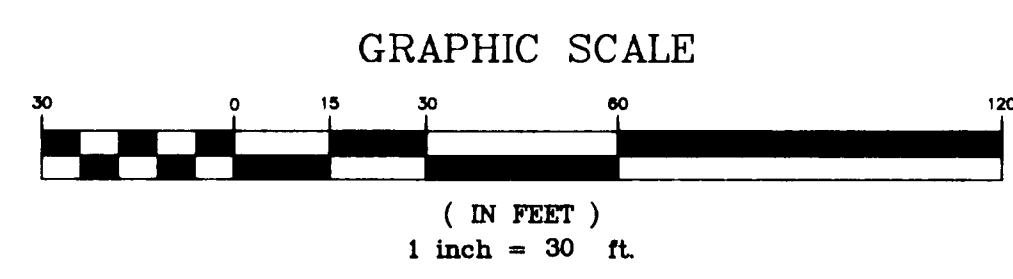
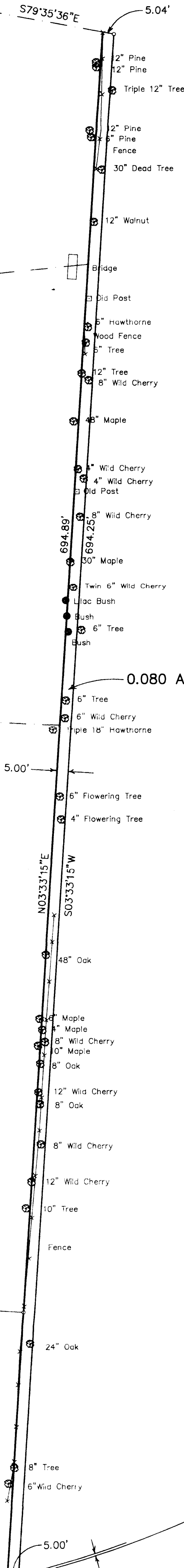
BASIS OF BEARINGS: Bearings are based on The Ohio State Plane Coordinate System as per NAD83. Control for bearings was from coordinates of monuments established by the Franklin County Engineering Department using Global Positioning System procedures and equipment.

Ivor E. & Agnes M. Campbell
 4.239 Ac.
 D. B. 3400, Pg. 385

0.897 Ac.
 O.R. 10935 B 03

THE NEW ALBANY COUNTRY CLUB SECTION 3
FENWAY
 (P. B. 74, Pg. 44)

The New Albany Company
 6.243 Ac.
 Parcel 8 Tract III
 O. R. 14554 B 14



The New Albany Company Limited Partnership
 O. R. 16314 A 12

0-75-F