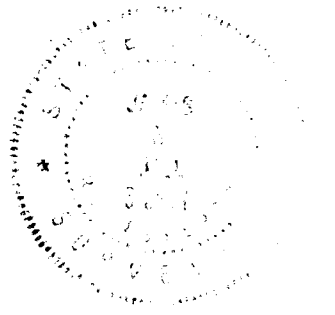


**SURVEY OF ACREAGE PARCELS**  
 Located In  
 Quarter Township 3, Township 2, Range 16  
 United States Military Lands  
 City Of Columbus, Franklin County, Ohio

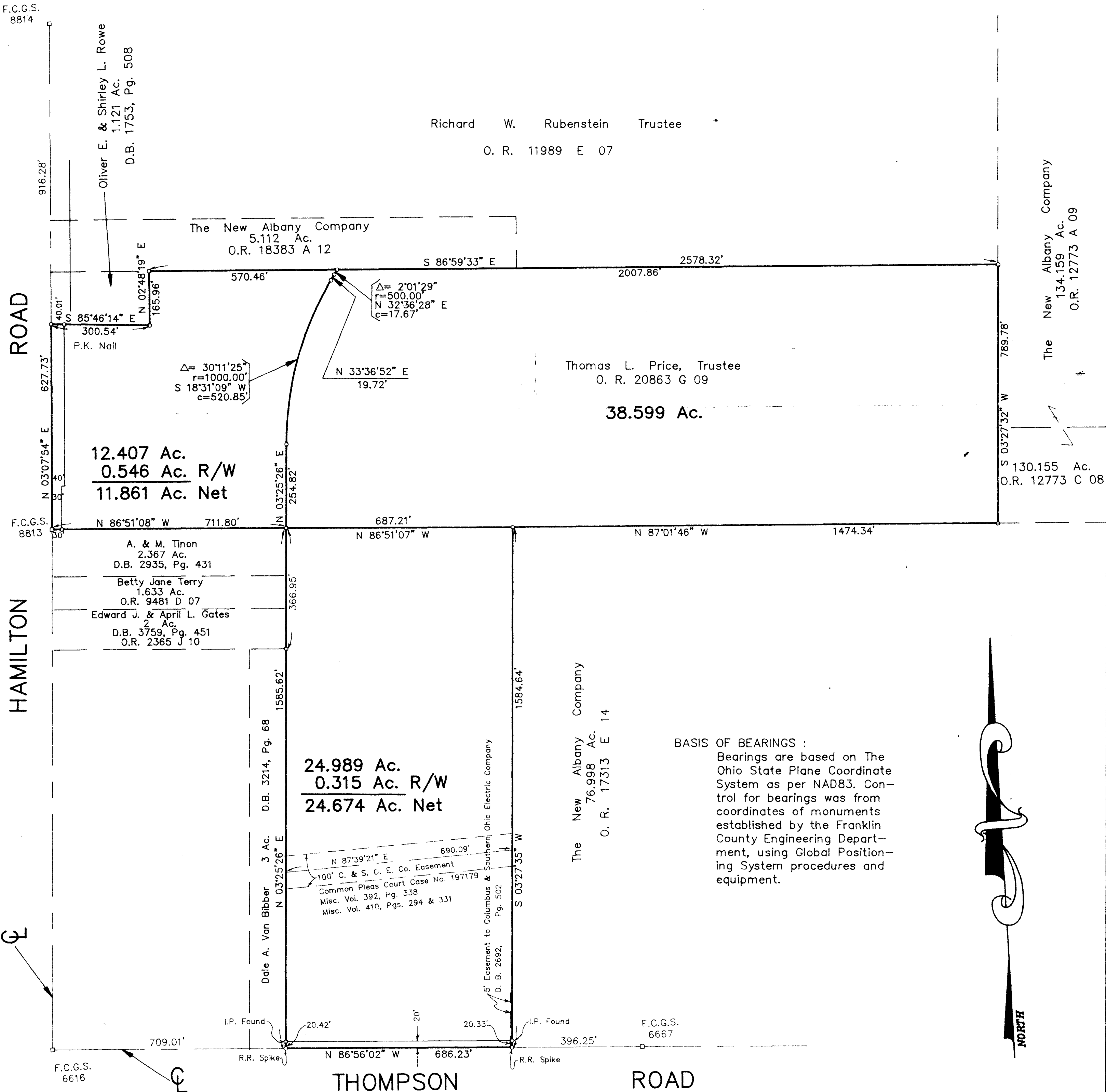
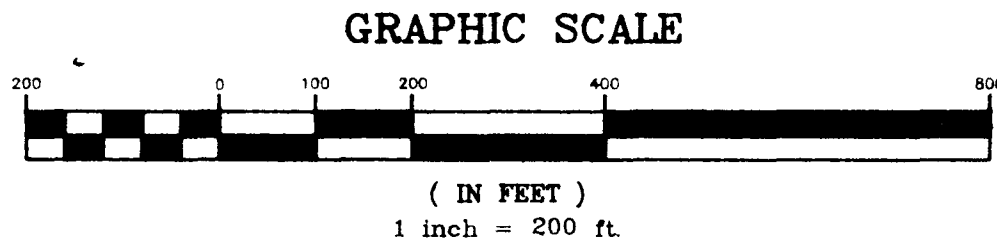
SURVEYED & PLATTED  
 BY  
**EVANS, MECHWART, HAMBLETON & TILTON, INC.**  
 CONSULTING ENGINEERS & SURVEYORS  
 170 MILL STREET  
 GAHANNA, OHIO 43230  
 (614) 471 - 5150



By James E. Hill  
 Professional Surveyor No. 6919

SCALE : 1" = 200'

o = IRON PIN  
 NOVEMBER 12, 1992



**BASIS OF BEARINGS :**  
 Bearings are based on The Ohio State Plane Coordinate System as per NAD83. Control for bearings was from coordinates of monuments established by the Franklin County Engineering Department, using Global Positioning System procedures and equipment.

