

SURVEY OF ACREAGE PARCEL
LOCATED IN
QUARTER TOWNSHIP 4, TOWNSHIP 2, RANGE 17
UNITED STATES MILITARY LANDS
CITY OF COLUMBUS, FRANKLIN COUNTY, OHIO

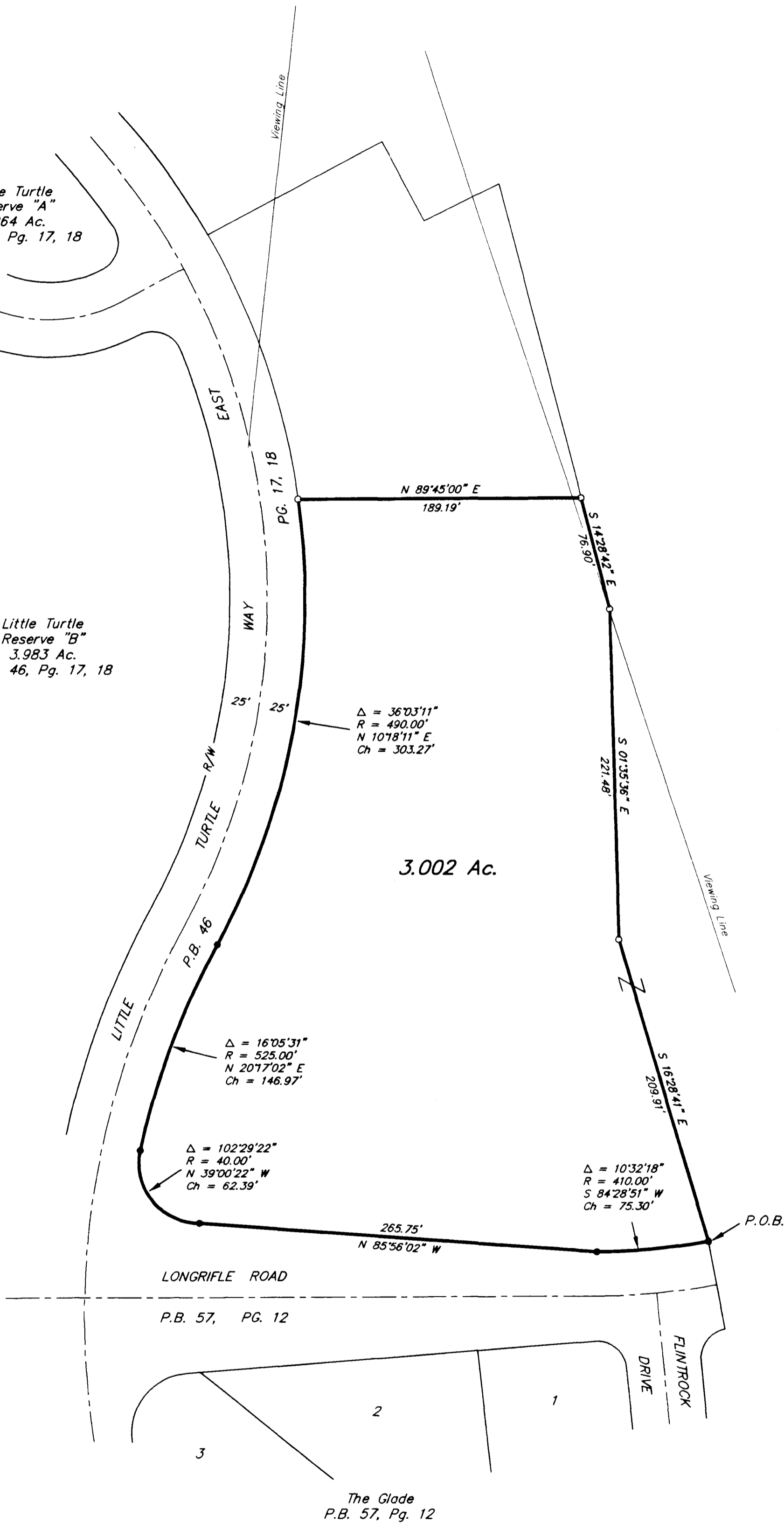
Little Turtle Reserve "A"
0.264 Ac.
P.B. 46, Pg. 17, 18

Little Turtle Reserve "B"
3.983 Ac.
P.B. 46, Pg. 17, 18

▲ R.R. Spk. Fnd.
△ R.R. Spk. Set
● I.P. Fnd.
○ I.P. Set

I.P. set are 3/4" O.D. Iron Pin
30" long w/cap inscribed EMH&T.

Wickford Company, Inc.
O.R. 11507C12



GRAPHIC SCALE
(IN FEET)

BASIS OF BEARINGS: The bearings shown hereon are based on the same meridian as the bearings shown on the plat entitled "The Glade" of record in Plat Book 57, Page 12, in which the centerline of Longrifle Road has a bearing of N 89°45'00" E, Recorder's Office, Franklin County, Ohio.



SURVEYED & PLATTED
BY
EMH&T
CONSULTING ENGINEERS & SURVEYORS
170 MILL STREET
GAHANNA, OHIO 43230
(614) 471-5150

By Clark E. White
Professional Surveyor No. 7868