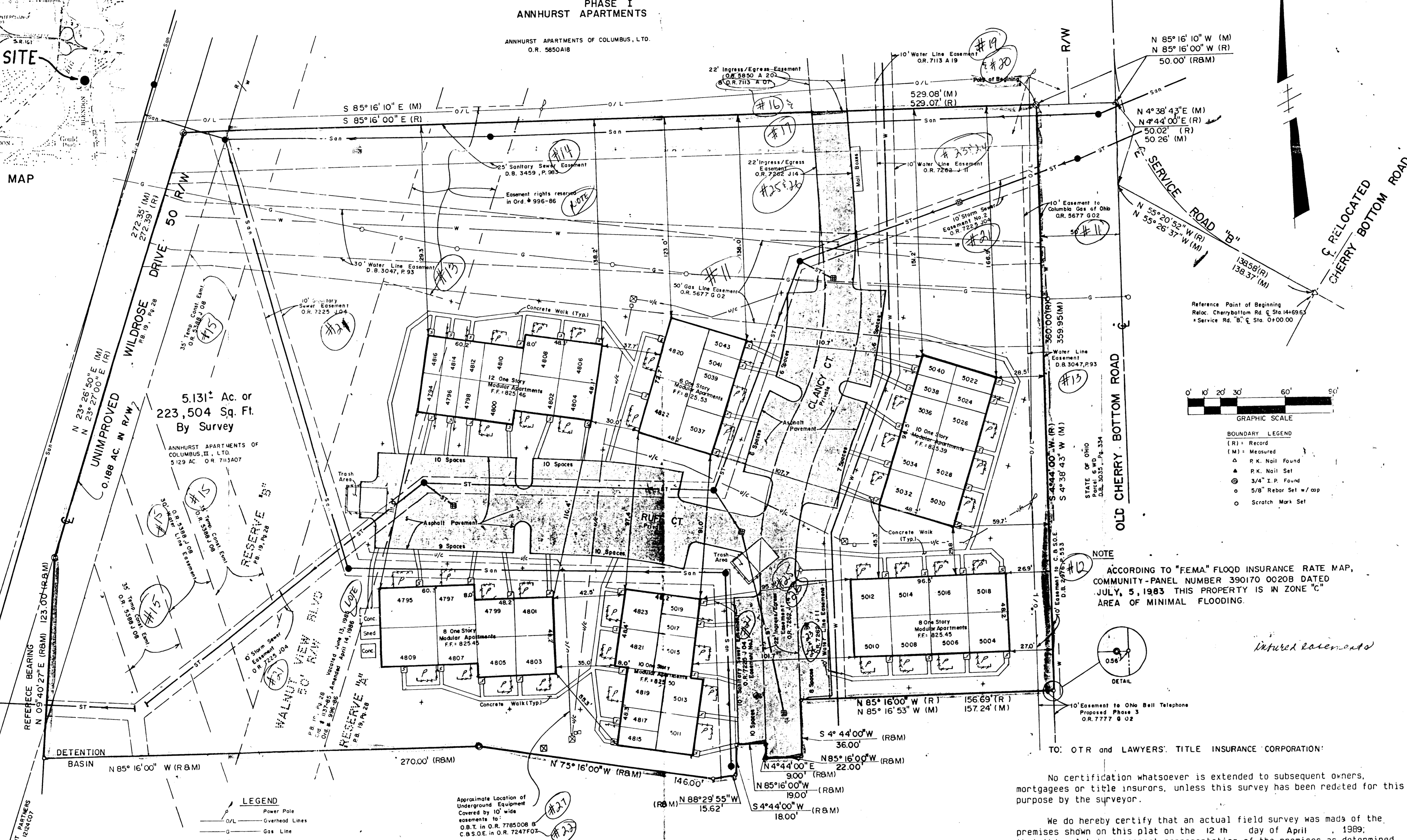


**BENCH MARK**  
 Top of casting on sanitary manhole  
 40' east of the NE property  
 corner. ELEV. = 831.13

For the purpose of this survey a bearing of N 9° 40' 27" E  
 was used on a westerly line of this tract as called for in  
 O.R. 7113A07 and all other bearings were calculated from  
 this meridian.

**PHASE I  
 ANNHURST APARTMENTS**  
 ANNHURST APARTMENTS OF COLUMBUS, LTD.  
 O.R. 5650A18



5.131± Ac. or  
 223,504 Sq. Ft.  
 By Survey

ANNHURST APARTMENTS OF  
 COLUMBUS, LTD.  
 5129 AC. O.R. 713A07

ANNHURST APARTMENTS OF  
 COLUMBUS, LTD.  
 5129 AC. O.R. 713A07

ANNHURST APARTMENTS OF  
 COLUMBUS, LTD.  
 5129 AC. O.R. 713A07

ANNHURST APARTMENTS OF  
 COLUMBUS, LTD.  
 5129 AC. O.R. 713A07

ANNHURST APARTMENTS OF  
 COLUMBUS, LTD.  
 5129 AC. O.R. 713A07

ANNHURST APARTMENTS OF  
 COLUMBUS, LTD.  
 5129 AC. O.R. 713A07

ANNHURST APARTMENTS OF  
 COLUMBUS, LTD.  
 5129 AC. O.R. 713A07

ANNHURST APARTMENTS OF  
 COLUMBUS, LTD.  
 5129 AC. O.R. 713A07

ANNHURST APARTMENTS OF  
 COLUMBUS, LTD.  
 5129 AC. O.R. 713A07

ANNHURST APARTMENTS OF  
 COLUMBUS, LTD.  
 5129 AC. O.R. 713A07

ANNHURST APARTMENTS OF  
 COLUMBUS, LTD.  
 5129 AC. O.R. 713A07

ANNHURST APARTMENTS OF  
 COLUMBUS, LTD.  
 5129 AC. O.R. 713A07

ANNHURST APARTMENTS OF  
 COLUMBUS, LTD.  
 5129 AC. O.R. 713A07

ANNHURST APARTMENTS OF  
 COLUMBUS, LTD.  
 5129 AC. O.R. 713A07

ANNHURST APARTMENTS OF  
 COLUMBUS, LTD.  
 5129 AC. O.R. 713A07

ANNHURST APARTMENTS OF  
 COLUMBUS, LTD.  
 5129 AC. O.R. 713A07

ANNHURST APARTMENTS OF  
 COLUMBUS, LTD.  
 5129 AC. O.R. 713A07

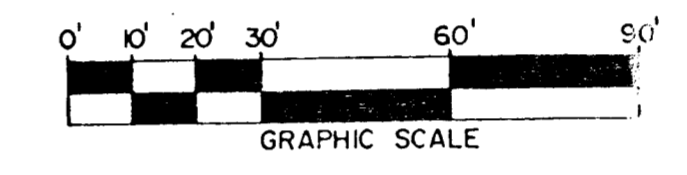
ANNHURST APARTMENTS OF  
 COLUMBUS, LTD.  
 5129 AC. O.R. 713A07

ANNHURST APARTMENTS OF  
 COLUMBUS, LTD.  
 5129 AC. O.R. 713A07

- LEGEND**
- /L Power Pole
  - Overhead Lines
  - Gas Line
  - Gas Marker
  - Sanitary Sewer
  - Manhole
  - Day Wire
  - Storm Sewer
  - Storm Inlet
  - Water Line App. Location
  - Fire Hydrant
  - Patio
  - Sloop
  - Fence
  - Site Light
  - Electric Transformer
  - Telephone Pedestal
  - /C Approximate location of  
Underground Cables &  
IO Easements

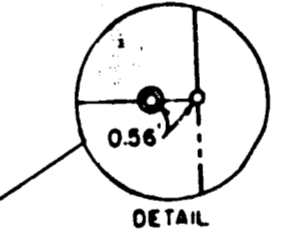
Approximate Location of  
 Underground Equipment  
 Covered by 10' wide  
 easements to:  
 O.B.T. in O.R. 7785D08 B  
 C.B.S.O.E. in O.R. 7247F02

**PHASE III  
 ANNHURST APARTMENTS**  
 ANNHURST APARTMENTS OF COLUMBUS, LTD.  
 O.R. 10853 J12



- BOUNDARY LEGEND**
- (R) = Record
  - (M) = Measured
  - P.K. Nail Found
  - △ P.K. Nail Set
  - ⊙ 3/4" I.P. Found
  - 5/8" Rebar Set w/cap
  - Scratch Mark Set

**NOTE**  
 ACCORDING TO "FEMA" FLOOD INSURANCE RATE MAP,  
 COMMUNITY-PANEL NUMBER 390170 00208 DATED  
 JULY 5, 1983 THIS PROPERTY IS IN ZONE "C"  
 AREA OF MINIMAL FLOODING



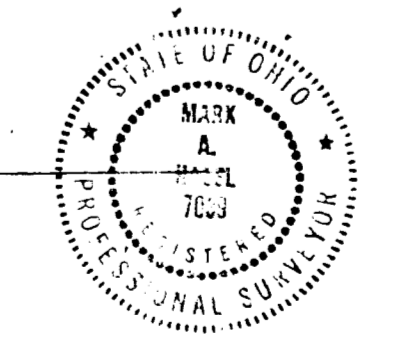
TO: OTR and LAWYERS' TITLE INSURANCE CORPORATION

No certification whatsoever is extended to subsequent owners,  
 mortgagees or title insurers, unless this survey has been redited for this  
 purpose by the surveyor.

We do hereby certify that an actual field survey was made of the  
 premises shown on this plat on the 12th day of April, 1989,  
 that this plat is a correct representation of the premises as determined  
 by said survey. We further certify that there are no encroachments either  
 way across any boundary line of the premises except as shown hereon.

Signed at 1:15 P.M. this 25th day of April, 1989

SITE ENGINEERING, INC.  
 Mark A. Meyer  
 Registered Surveyor No. 7039



NOTE: UNAUTHORIZED ALTERATION OR  
 ADDITION TO THIS SURVEY PLAT  
 IS A VIOLATION OF SECTION 711.17  
 TO 711.19 OF THE O.R.C.

NOTE: THIS SURVEY WAS PREPARED IN THE RELIANCE  
 UPON LAWYERS' TITLE INSURANCE CORPORATION  
 COMMITMENT No. 47802 201  
 EFFECTIVE DATE: APRIL 18, 1989

**SITE ENGINEERING, INC.**  
 CONSULTING ENGINEERS & SURVEYORS  
 REYNOLDSBURG, OHIO OFFICE  
 SUITE 190  
 2240 BRACE ROAD  
 REYNOLDSBURG, OHIO 43068  
 PHONE (614) 729-3900

**ANNHURST APARTMENTS  
 PHASE II  
 RECORD DRAWING**

APRIL 89 - ALTA  
 JUNE 1989 - REVISED  
 REVD.: MAR. 1988  
 DATE: SEPT. 1986  
 SCALE: 1" = 30'  
 DRAWN: D.A.S.  
 CHECKED: F.L.  
 FILE: SHEET:  
 1507 1 of 1