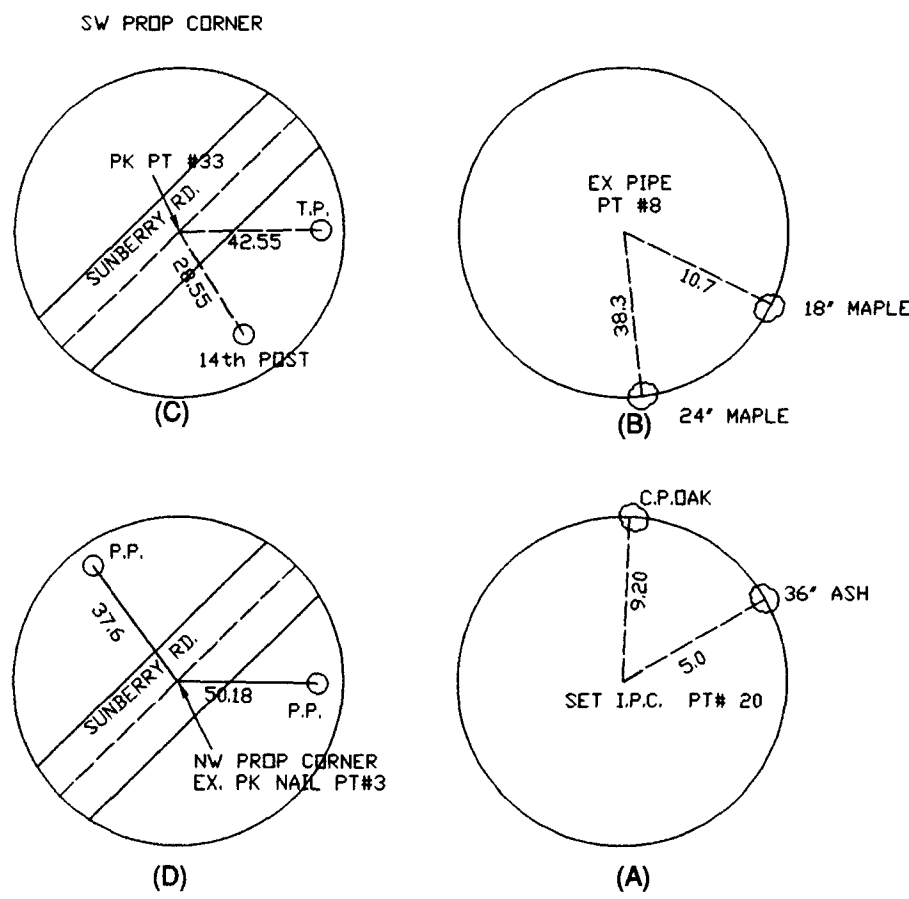


WITNESS TIES



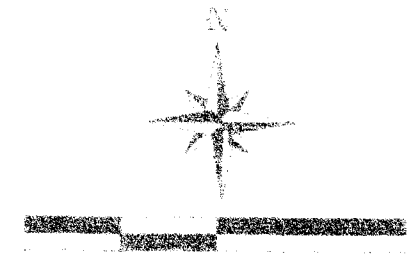
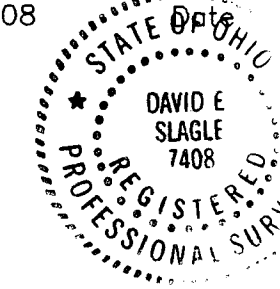
REFERENCE POINT

LAND SURVEY

PLAT OF SURVEY MADE FOR:
BONNE McDANNALD

SHOWING A TRACT OF LAND LYING IN SECTION 4, TOWNSHIP 2,
RANGE 17, U.S. MILITARY LANDS IN FRANKLIN, CO., OHIO
SURVEY MADE DURING OCT. AND NOV. 2001

by David E. Slagle 02-22-02
David E. Slagle P.S. #7408

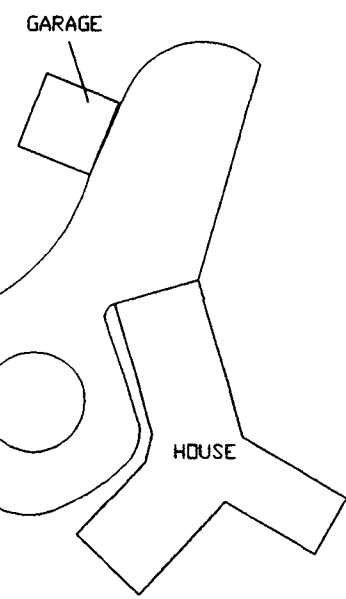


- LEGEND:
- I.P. FOUND
 - 5/8" I.P. SET W/CAP
 - △ PK FOUND
 - ▲ PK SET

DV 05114 H02
BONNE McDANNALD

P.O.B.

(BASELINE FOR BEARINGS)
S 71°05'03"E 811.05' (811.00'-DEED)



TRACT "B"
2.277 ACRES

TOTAL
TRACT "A"
10.868 ACRES
(INCLUDING TRACT "B")

PARCEL B 1.063 ACRES
(SOLD)

CARL R OSBORNE
INST# 199711120141688
PARCEL A 9.906 ACRES

0.976 ACRES
CHARLES E. SMITH
D.V. 03100 D20

MADE FOR:	BONNE McDANNALD		
XYZ	DATE: 11/12/2001	JOB# 21-159	
	SCALE: 1" = 60'	F.B# 115	
	REVISED: 2/22/2002	MAP# 21-159	
	SURVEY SERVICE INC.		DRAWN BY: M.P.G.
3011 COLUMBUS ST. #202		CHECKED BY: D.E.S.	
GROVE CITY OH 43123		CAD FILE 21-159	
FAX: 614-875-7862 PH: 614-539-9220			