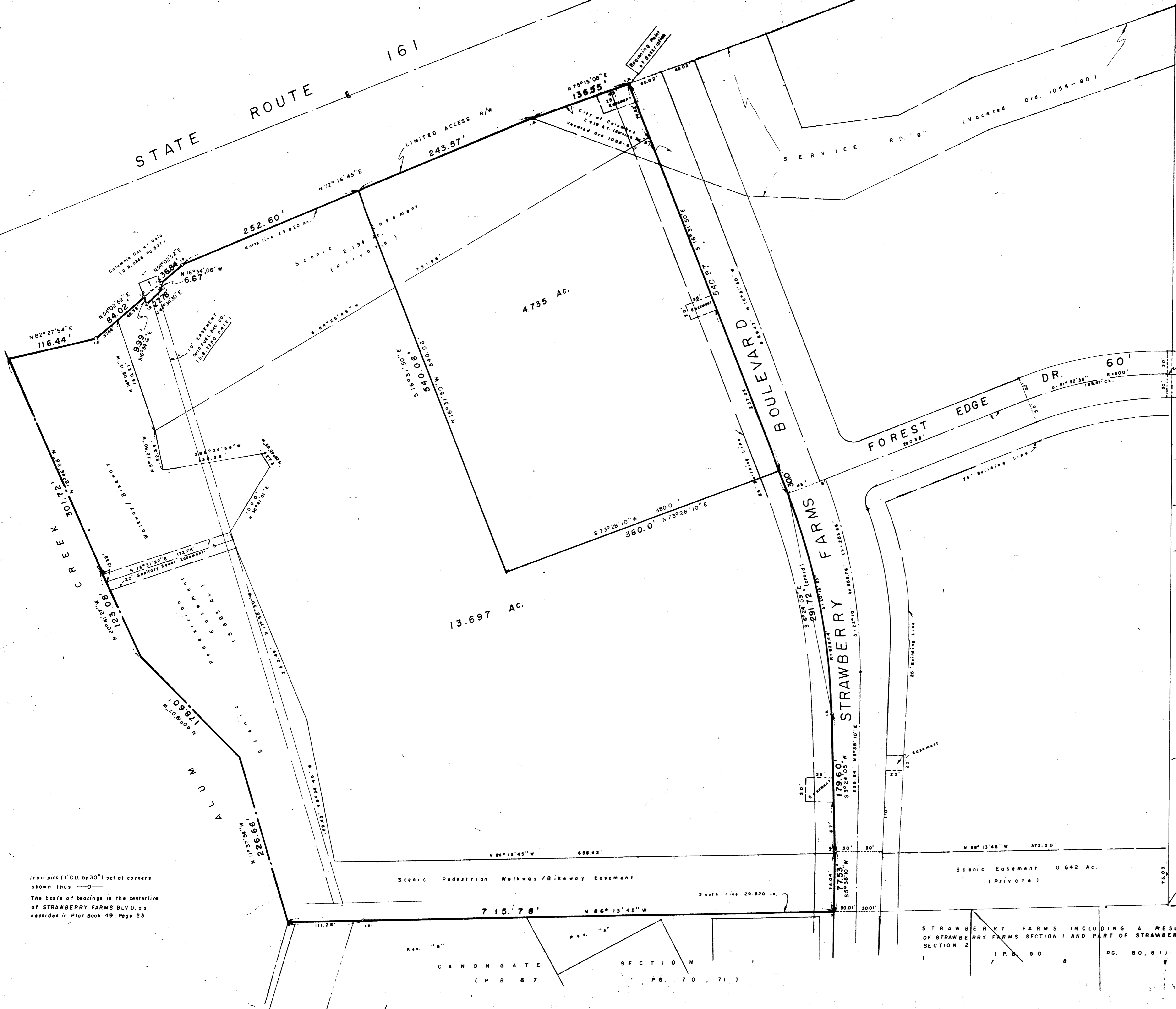
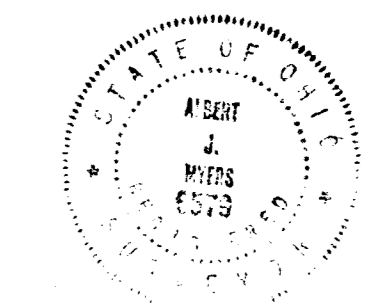


PLAT OF A 4.735 AC. TRACT AND A 13.697 AC. TRACT (BEING PART OF THE 29.820 AC. TRACT CONVEYED TO THE CITIZENS SAVINGS AND LOAN COMPANY BY SHERIFF'S DEED ON ORDER OF SALE (D.B. 3600, PG. 400, RECORDER'S OFFICE, FRANKLIN COUNTY, OHIO), AND PART OF THE 2.416 AC. TRACT (PART OF SERVICE RD. "B"), CONVEYED TO THE CITY OF COLUMBUS IN D.B. 3787, PG. 609, AND VACATED BY CITY OF COLUMBUS ORDINANCE NO. 1055-80), AND BEING SITUATED IN TOWNSHIP 2, SECTION 3, RANGE 17, UNITED STATES MILITARY LANDS, COLUMBUS, OHIO

FOR
CIMARRON CORPORATION



Scale 1" = 60'
February 17, 1982
Revised March 4, 1985 (Partition of 18.432 Ac.)



I hereby certify that the foregoing plat represents a true return of a survey made by me in February, 1982.

by Albert J. Myers
Albert J. Myers Registered Surveyor #6579

MYERS SURVEYING COMPANY
Civil Engineers and Surveyors
Columbus, (Bexley), Ohio

Iron pins (1" O.D. by 30") set at corners shown thus —
The basis of bearings is the centerline of STRAWBERRY FARMS BLVD. as recorded in Plat Book 49, Page 23.

STRAWBERRY FARMS INCLUDING A RESUBDIVISION OF STRAWBERRY FARMS SECTION 1 AND PART OF STRAWBERRY FARMS SECTION 2 (P.B. 50 8 PG. 80, 81)

CANONGATE SECTION 1 (P.B. 57 PG. 70, 71)