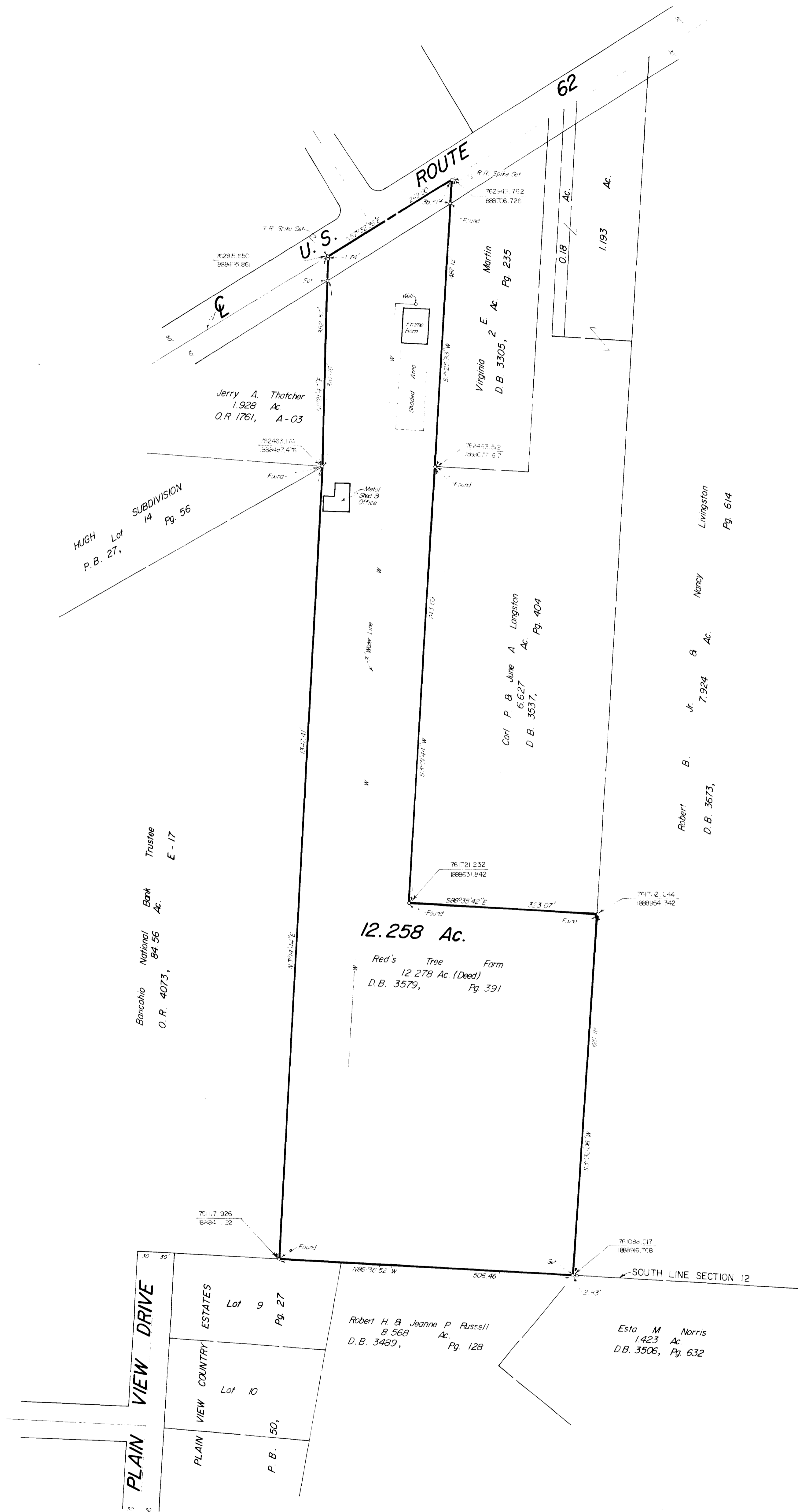


SURVEY OF ACREAGE PARCEL
Located In N.E. Quarter Of Section 12, Township 2, Range 16
United States Military Lands
Plain Township, Franklin County, Ohio



SURVEYED & PLATTED
BY
EVANS, MECHWART, HAMBLETON & TILTON, INC.
CONSULTING ENGINEERS AND SURVEYORS
GRAHAMMA, OHIO

We hereby declare that the foregoing plat was prepared from an actual survey, and the premises are shown the location of buildings.

Professional Surveyor No. 5425

SCALE 1"=100'

0=IRON PIN

SEPTEMBER 1, 1988



Bearings and coordinates shown on surveyed parcels are based on THE OHIO STATE PLANE COORDINATE SYSTEM as per NAD83. Control for bearings and coordinates was from coordinates of monuments established by the Franklin County Engineering Department using Global Positioning System procedures and equipment.