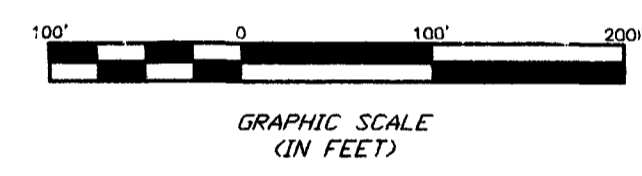
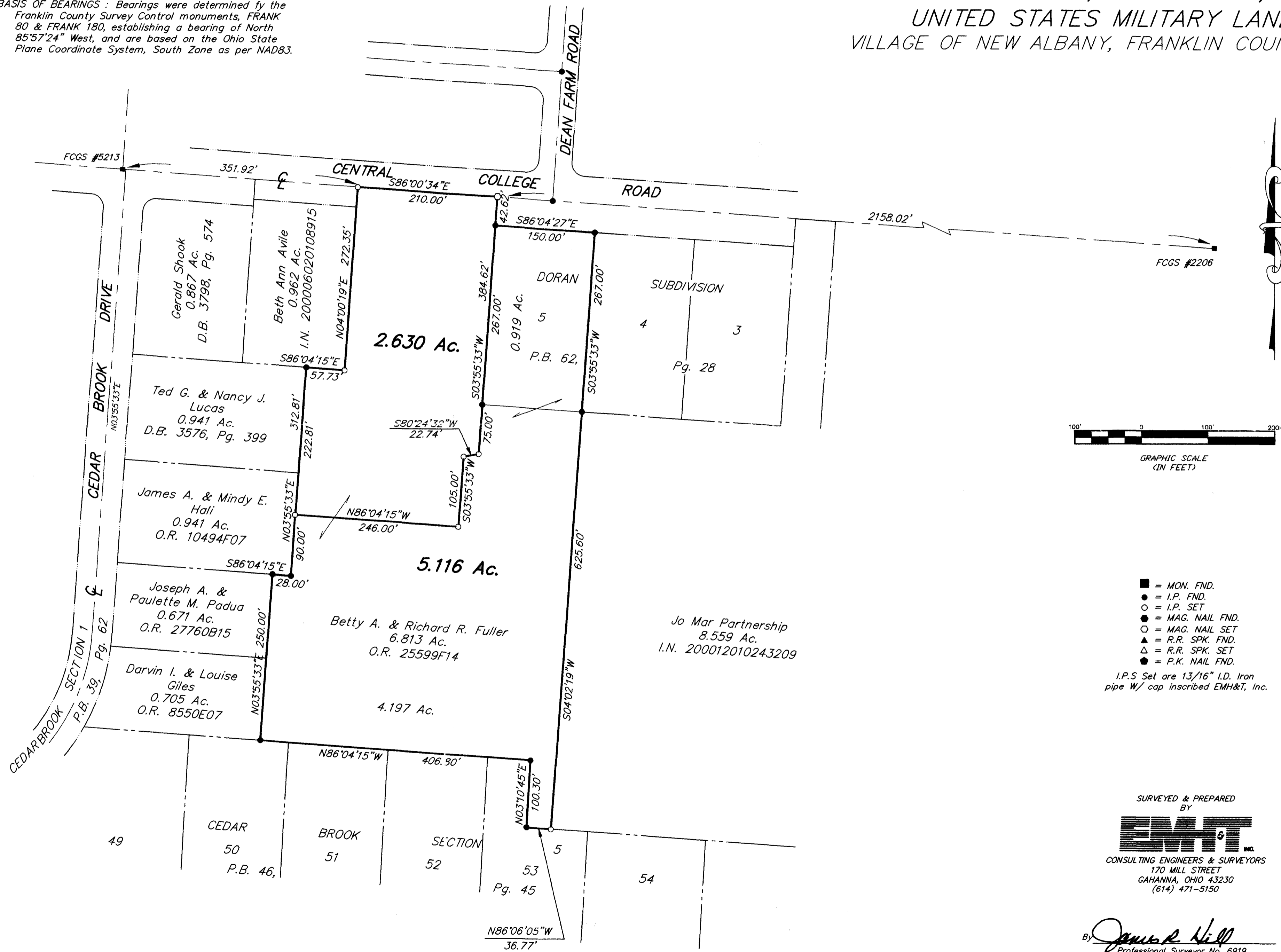


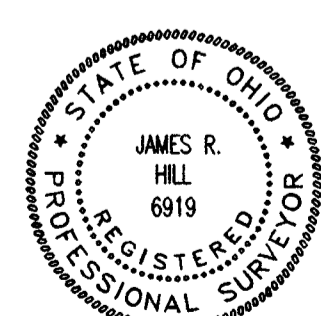
**SURVEY OF ACREAGE PARCELS**  
 LOCATED IN SECTION 12,  
 QUARTER TOWNSHIP 1, TOWNSHIP 2, RANGE 16  
 UNITED STATES MILITARY LANDS  
 VILLAGE OF NEW ALBANY, FRANKLIN COUNTY, OHIO

**BASIS OF BEARINGS :** Bearings were determined by the Franklin County Survey Control monuments, FRANK 80 & FRANK 180, establishing a bearing of North 85°57'24" West, and are based on the Ohio State Plane Coordinate System, South Zone as per NAD83.



- = MON. FND.
  - = I.P. FND.
  - = I.P. SET
  - = MAG. NAIL FND.
  - = MAG. NAIL SET
  - ▲ = R.R. SPK. FND.
  - △ = R.R. SPK. SET
  - = P.K. NAIL FND.
- I.P.S. Set are 13/16" I.D. Iron pipe w/ cap inscribed EMH&T, Inc.

SURVEYED & PREPARED BY  
**EMH&T** INC.  
 CONSULTING ENGINEERS & SURVEYORS  
 170 MILL STREET  
 GAHANNA, OHIO 43230  
 (614) 471-5150



By James R. Hill  
 Professional Surveyor No. 6919

SCALE: 1" = 100'      OCTOBER 30, 2001

G:\PROJECT\20011276.01\DWG\11276BVDWG - 0 XREFS - PLOTTED BY RPARKER - October 25, 2001 - 2:57 PM