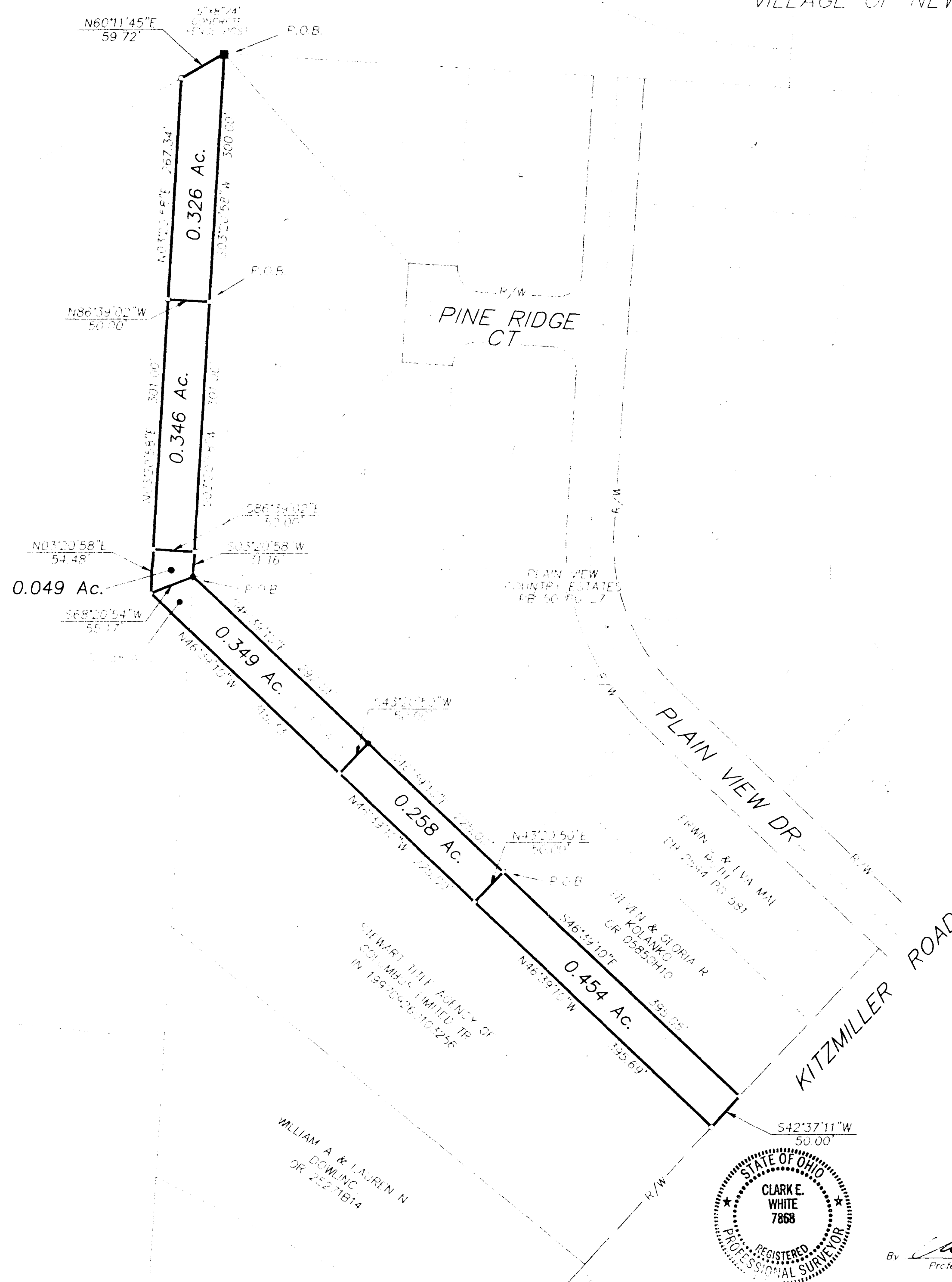


SURVEY OF ACREAGE PARCELS
LOT 24, QTR TWP 4, TWP 2, RNG 16
UNITED STATES MILITARY LANDS
VILLAGE OF NEW ALBANY, FRANKLIN COUNTY, OHIO

BANC OHIO NATIONAL BANK, TR
 32.374 Ac.
 OR 4073E17

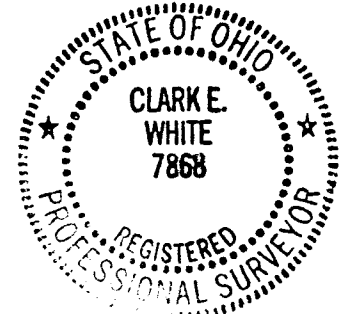
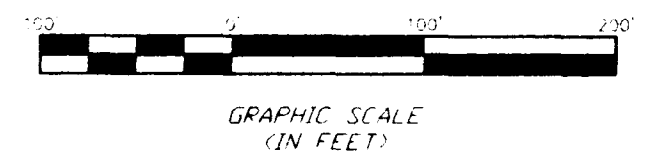
LOT 23, QTR TWP 1
 LOT 24, QTR TWP 4



THE NEW ALBANY COMPANY LLC
 17.996 Ac.
 IN 1998101502R3210

- ▲ R.R. Spk. End.
- △ R.R. Spk. Set
- I.P. End
- I.P. Set

I.P. set are 3/4" O.D. Iron Pin
 30" long w/cap inscribed EMH&T.



By *Clark E. White*
 Professional Surveyor No. 7868

Surveyed & Prepared
 By
EVANS, MECHWART, HAMBLETON & TILTON INC.
 CONSULTING ENGINEERS & SURVEYORS
 170 MILL STREET
 GAHANNA, OHIO 43230
 614/471-5150

SCALE: 1" = 100' APRIL 29, 1999

\\SERVER-4\SURVEY\PROJECT\S06330\DWG\S06330BV3.DWG - D. XREES - PLOTTED BY JIBUSHER - April 29, 1999 - 7:28 AM