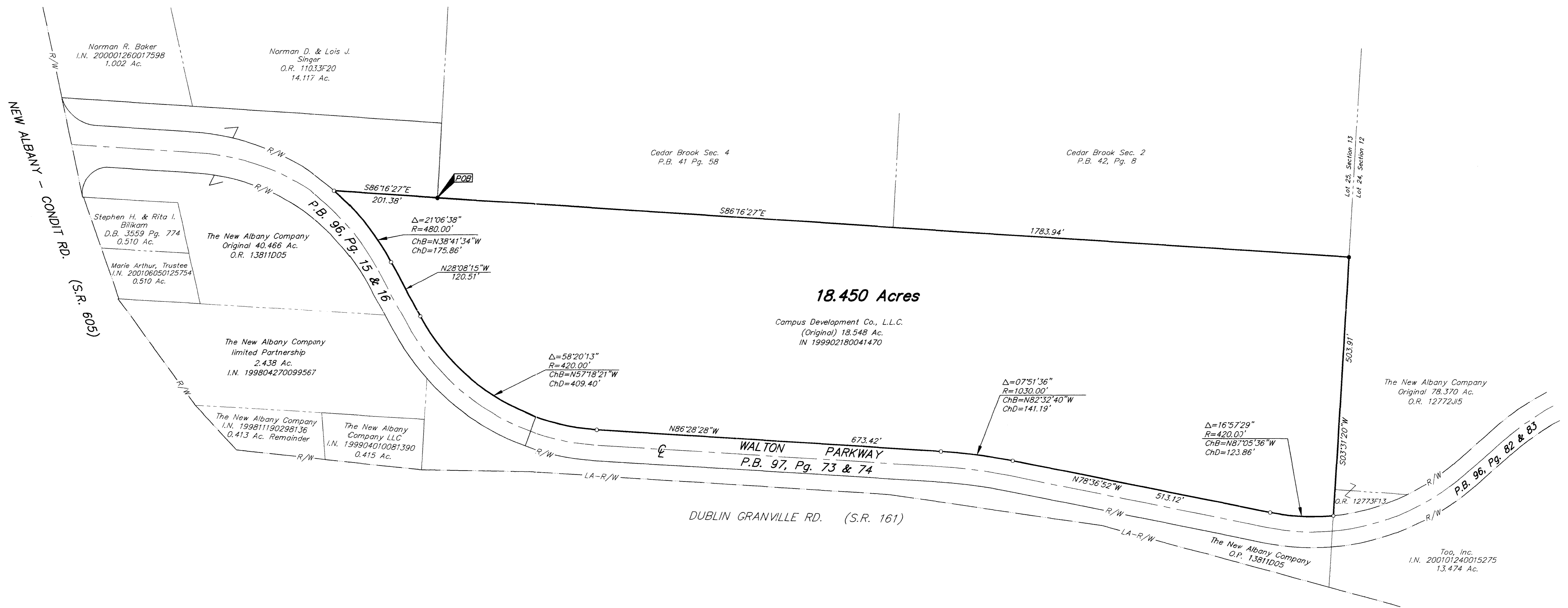
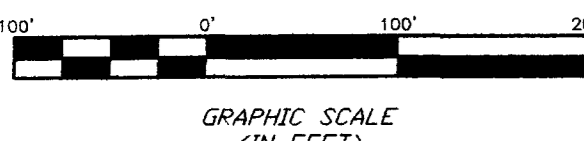


SURVEY OF ACREAGE PARCEL
SECTION 13, QUARTER TOWNSHIP 1, TOWNSHIP 2, RANGE 16,
UNITED STATES MILITARY LANDS
VILLAGE OF NEW ALBANY, FRANKLIN COUNTY, OHIO



C:\PROJECT\20020087.01\DWG\20087b1.DWG - O XREFS - PLOTTED BY JUBUSHBY - January 18, 2002 - 3:17 PM

- = MON. FND.
 - = I.P. FND.
 - = I.P. SET
 - = MAG. NAIL FND.
 - = MAG. NAIL SET
 - ▲ = R.R. SPK. FND.
 - △ = R.R. SPK. SET
 - = P.K. NAIL FND.
- I.P.S. Set are 1 3/16" I.D. Iron pipe w/ cap inscribed EMH&T, Inc.



The Basis of Bearing for this drawing is S 86° 25' 38" E for a portion of the Centerline of State Route 161 as shown on FRA-161-16.75 LIC-161-0.00



SURVEYED & PREPARED BY
EMH&T
 CONSULTING ENGINEERS & SURVEYORS
 170 HILL STREET
 CAHANNA, OHIO 43230
 (614) 471-5150

By *Clark E. White*
 Professional Surveyor No. 7868

SCALE: 1" = 100' JANUARY 18, 2002