

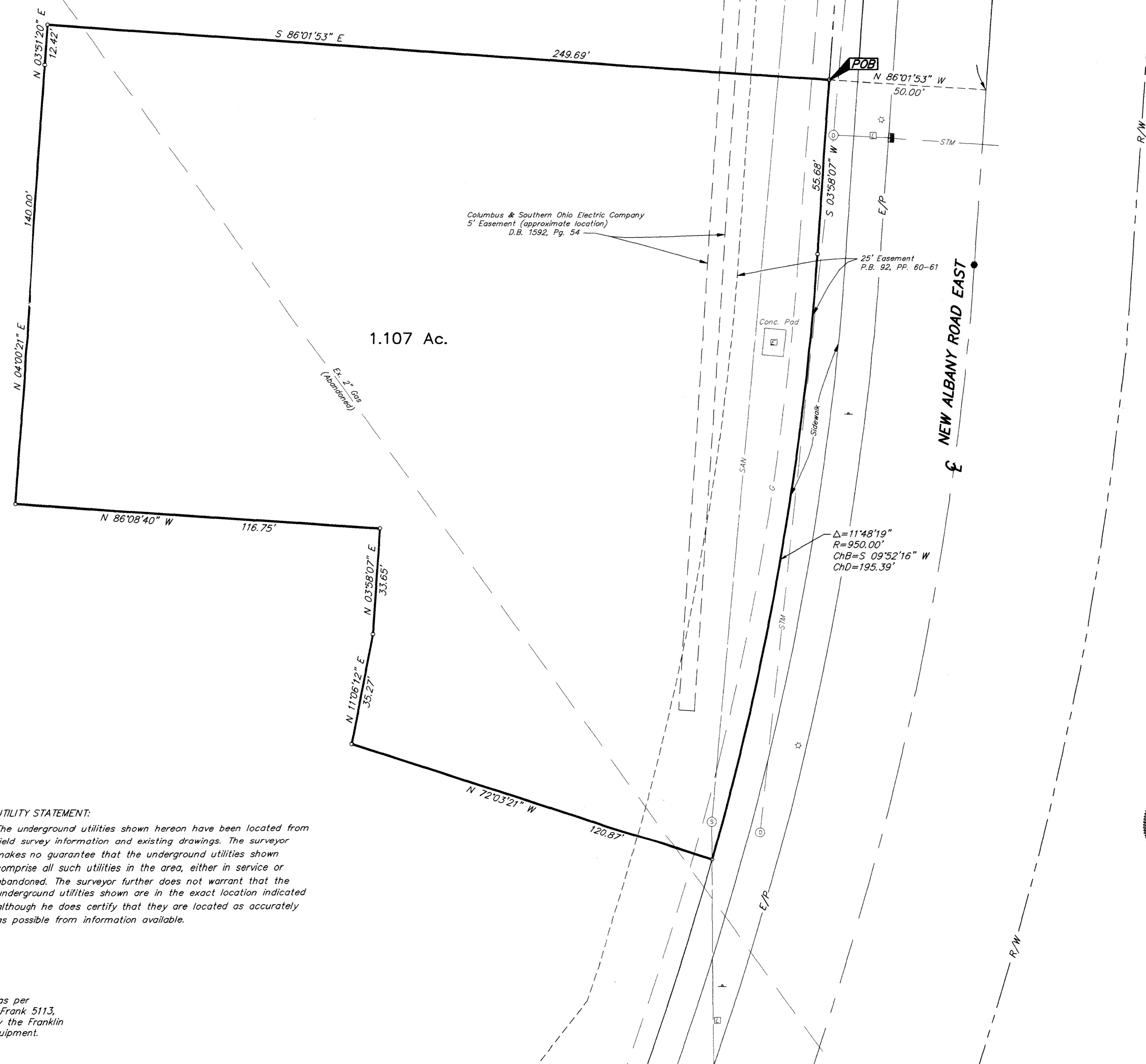
Location Map

**SURVEY OF ACREAGE PARCEL**  
 Located In  
 Section 13, Quarter Township 2, Township 2, Range 16  
 United States Military Lands  
 City of Columbus, Franklin County, Ohio



The New Albany Company  
 Orig. 104.471 Ac.  
 O.R. 16105D10

*Please have  
 legal approval  
 me*

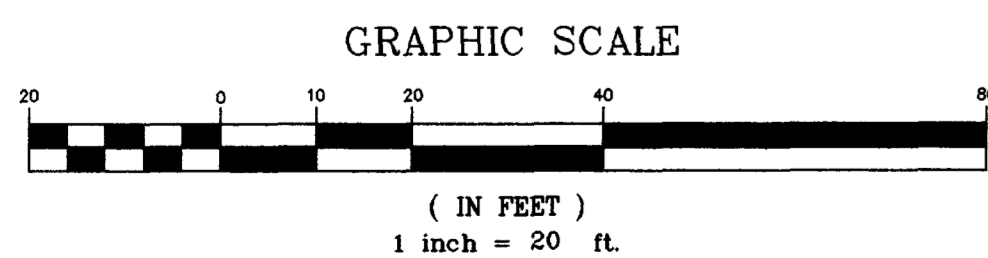


- P.K. Nail Fnd.
- P.K. Nail Set
- ▲ R.R. Spk. Fnd.
- △ R.R. Spk. Set
- I.P. Fnd.
- I.P. Set

I.P. set are 13/16" I.D. Iron Pin  
 30" long w/cap inscribed EMH&T.

**UTILITY STATEMENT:**

The underground utilities shown hereon have been located from field survey information and existing drawings. The surveyor makes no guarantee that the underground utilities shown comprise all such utilities in the area, either in service or abandoned. The surveyor further does not warrant that the underground utilities shown are in the exact location indicated although he does certify that they are located as accurately as possible from information available.



**BASIS OF BEARINGS:** Bearings are based on the Ohio State Plane Coordinate System as per NAD83. Control for bearings was from coordinates of monuments Frank 5574 and Frank 5113, with Central College Road having a bearing of South 86°09'40" East, established by the Franklin County Engineering Department, using Global Positioning System procedures and equipment.

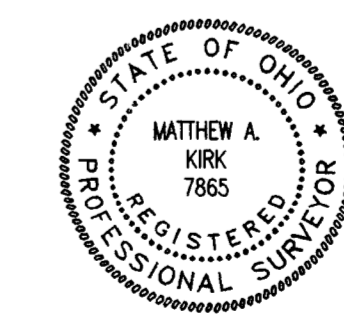
- LEGEND**
- ⊙ = Storm Manhole
  - ⊕ = Sanitary Manhole
  - ⊗ = Telephone Manhole
  - ⊞ = Telephone Pad
  - ⊚ = Electric Manhole
  - ⊠ = Electric Transformer
  - ⊞ = Light Control Box
  - ⊞ = Light Pole
  - ⊞ = Sign
  - ⊞ = Gas Valve
  - ⊞ = Water Valve
  - ⊞ = Fire Hydrant
  - ⊞ = Catch Basin
  - ⊞ = Curb Inlet
  - STM = Storm Sewer
  - SAN = Sanitary Sewer
  - E = Electric
  - G = Gas
  - W = Water
  - T = Telephone
  - ⊙ = Parking Meter

The following items from Title Commitment Number 120001201 do not apply to the subject parcel:

- O.R. 23026D20
- O.R. 26436F11

The subject parcel lies within ZONE X (areas determined to be outside the 500 year floodplain) as shown on the Federal Emergency Management Agency Flood Insurance Rate Map, Community Panel No. 39049C0180G, with an effective date of August 2, 1995.

I hereby certify, to the best of my knowledge and belief, to STEAK N SHAKE, INC. and to STEWART TITLE GUARANTY COMPANY that this map or plat and the survey on which it is based were made in accordance with "Minimum Standard Detail Requirements for ALTA/ACSM Land Title Surveys", jointly established and adopted by ALTA and ACSM in 1985, and includes items 12.3.4 and 13 of Table A thereof and pursuant to the accuracy standards (as adopted and in effect on the date of this certification) applicable to an Urban Survey. The easements shown on this survey are based upon Commitment Policy No. 120001201 prepared by Stewart Title Guaranty Company.



By Matthew A. Kirk  
 Professional Surveyor No. 7865

PREPARED BY  
**EVANS, MECHWART, HAMBLETON & TILTON, INC.**  
 CONSULTING ENGINEERS & SURVEYORS  
 170 MILL STREET  
 GAHANNA, OHIO 43230  
 (614) 471 - 5150

G:\PROJECT\20000226\01\DWG\0226BVI.DWG - 0 PREP - PLOTTED BY KJOUDDING - March 10, 2000 - 3:15 PM