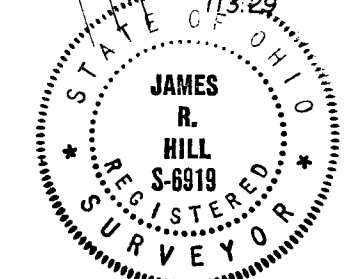
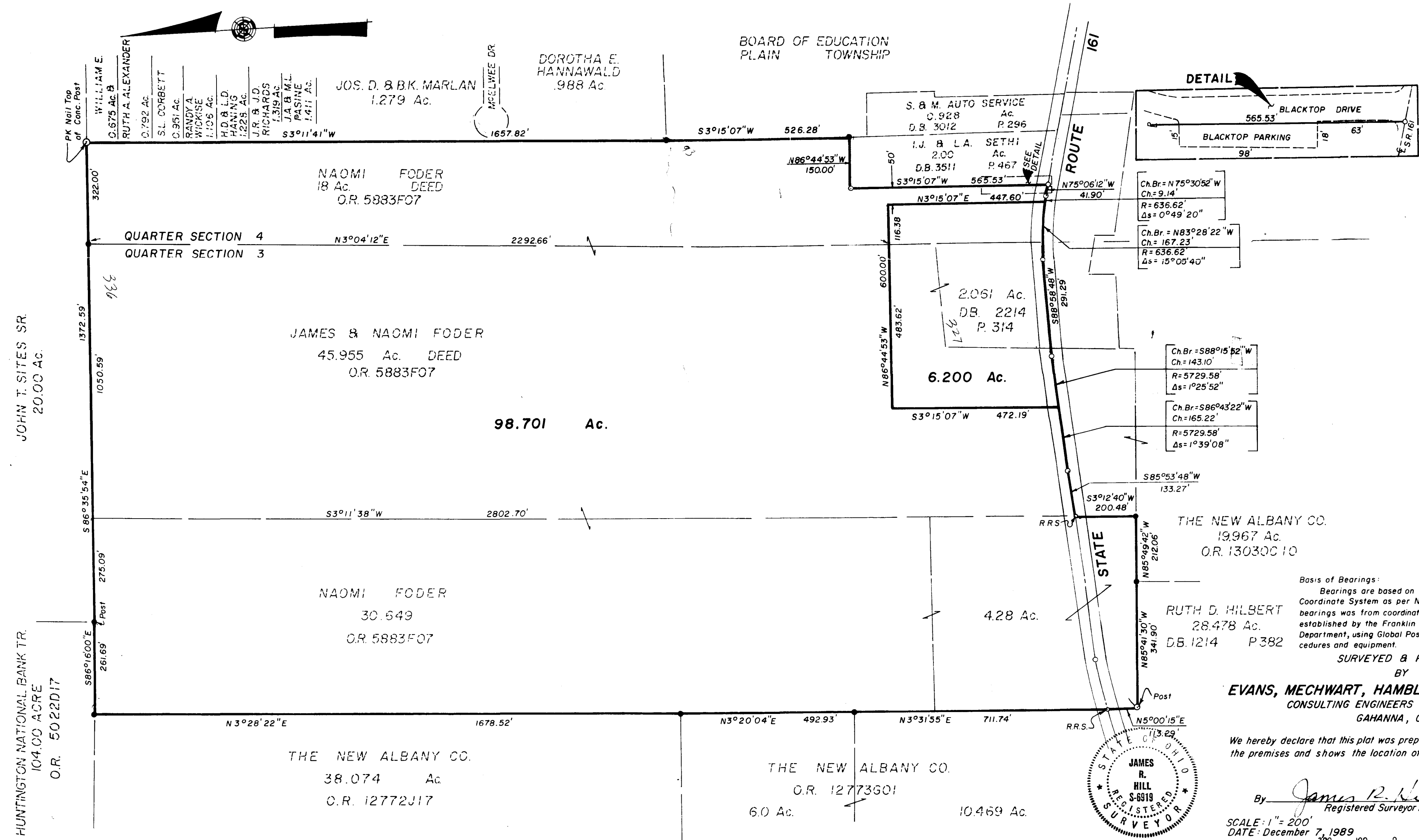


PLAT OF ACREAGE PARCELS LOCATED IN QUARTER SECTIONS 3 & 4, TOWNSHIP 2, RANGE 16 UNITED STATES MILITARY LANDS PLAIN TOWNSHIP, VILLAGE OF NEW ALBANY COUNTY OF FRANKLIN, STATE OF OHIO



Basis of Bearings:
Bearings are based on The Ohio State Plane Coordinate System as per NAD83. Control for bearings was from coordinates of monuments established by the Franklin County Engineering Department, using Global Positioning System procedures and equipment.

SURVEYED & PLATTED
BY
EVANS, MECHWART, HAMBLETON & TILTON, INC.
CONSULTING ENGINEERS AND SURVEYORS
GAHANNA, OHIO

We hereby declare that this plat was prepared from an actual survey of the premises and shows the location of the boundaries.

By James R. Hill
Registered Surveyor No. 6919

SCALE: 1" = 200'
DATE: December 7, 1989

○ = IRON PIN
● = IRON PIN FOUND