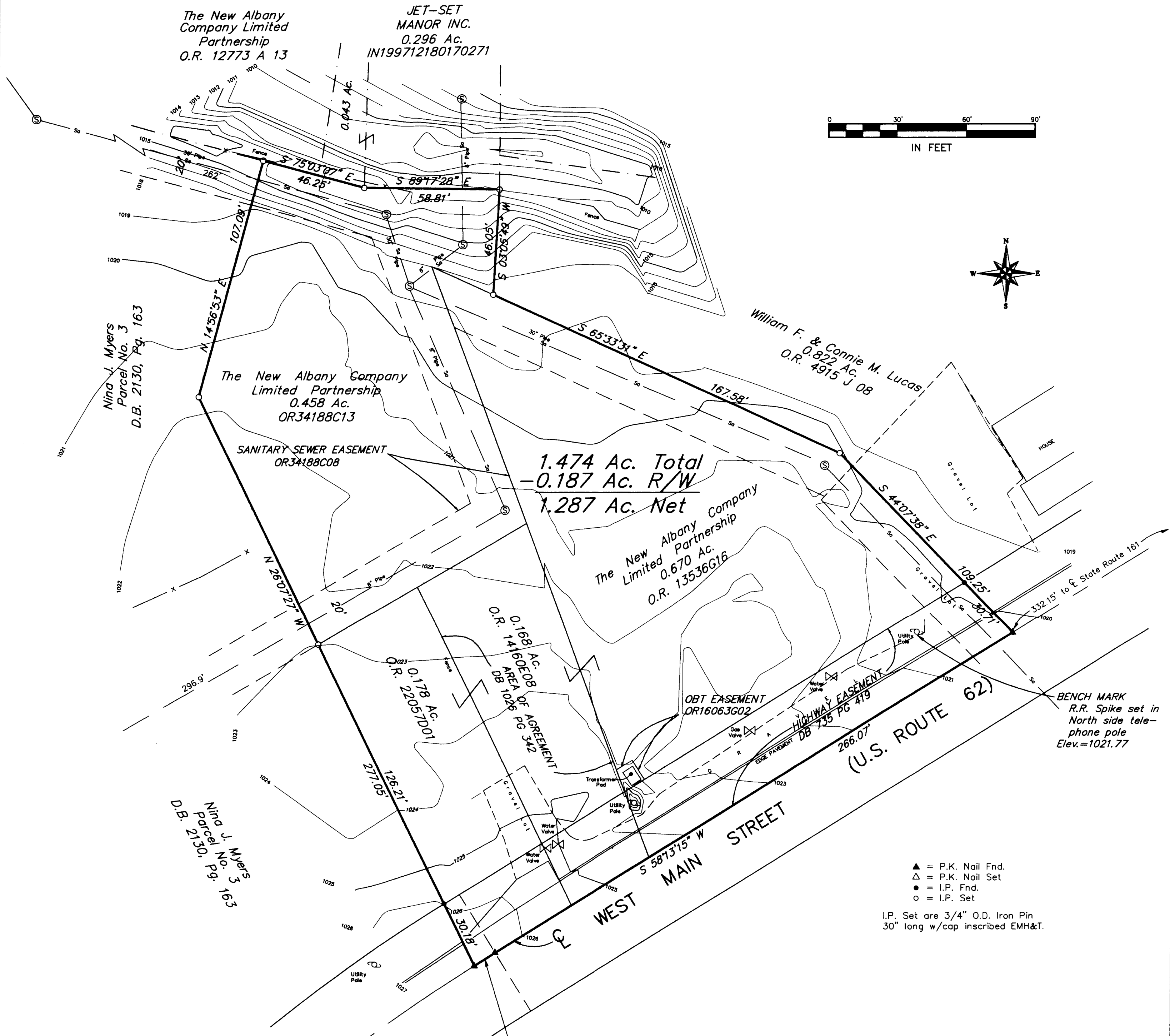
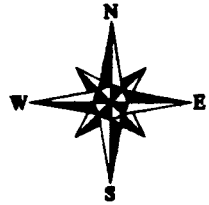


SURVEY OF ACREAGE PARCELS
 Located In Quarter Township 4, Township 2, Range 16
 United States Military Lands
 Village Of New Albany, Franklin County, Ohio

The New Albany
 Company Limited
 Partnership
 O.R. 12773 A 13

JET-SET
 MANOR INC.
 0.296 Ac.
 IN199712180170271



Nina J. Myers
 Parcel No. 3
 D.B. 2130, Pg. 163

The New Albany Company
 Limited Partnership
 0.458 Ac.
 OR34188C13

William F. & Connie M. Lucas
 0.822 Ac.
 O.R. 4915 J 08

1.474 Ac. Total
 - 0.187 Ac. R/W
 1.287 Ac. Net

The New Albany Company
 Limited Partnership
 0.670 Ac.
 O.R. 13536G16

Nina J. Myers
 Parcel No. 3
 D.B. 2130, Pg. 193

- ▲ = P.K. Nail Fnd.
 - △ = P.K. Nail Set
 - = I.P. Fnd.
 - = I.P. Set
- I.P. Set are 3/4" O.D. Iron Pin
 30" long w/cap inscribed EMH&T.

△ = 00°45'09"
 R = 816.69'
 S 57°50'48" W
 Ch. = 10.73'

To : The New Albany Company Limited Partnership, Stewart Guaranty Title and The United States Postal Service, and/or its assigns:

This is to certify that this map and the survey on which it is based were made in accordance with "Minimum Standard Detail Requirements for ALTA/ACSM Land Title Surveys", jointly established and adopted by ALTA and ACSM in 1997.

BASIS OF BEARINGS : Bearings are based on The Ohio State Plane Coordinate System as per NAD83. Control for bearings was from coordinates of monuments Number 78 and 178 established by the Franklin County Engineering Department, using Global Positioning System procedures and equipment.

PARCEL IS LOCATED WITHIN AREA DESCRIBED IN DECLARATION OF COVENANTS AND RESTRICTIONS OR16999C04

THE FOLLOWING EASEMENTS FROM TITLE COMMITMENT NO 9801876 CANNOT BE LOCATED FROM THE DESCRIPTION PROVIDED:
 DB 323 PG 146
 DB 2548 PG 90

THE FOLLOWING EASEMENTS FROM TITLE COMMITMENT NO 9801876 ARE NOT LOCATED ON THE SUBJECT PARCEL:
 DB 858 PG 15
 DB 1990 PG 619
 DB 2237 PG 453



By *Jeffrey A. Miller* 5-27-98
 Professional Surveyor No. 7211

