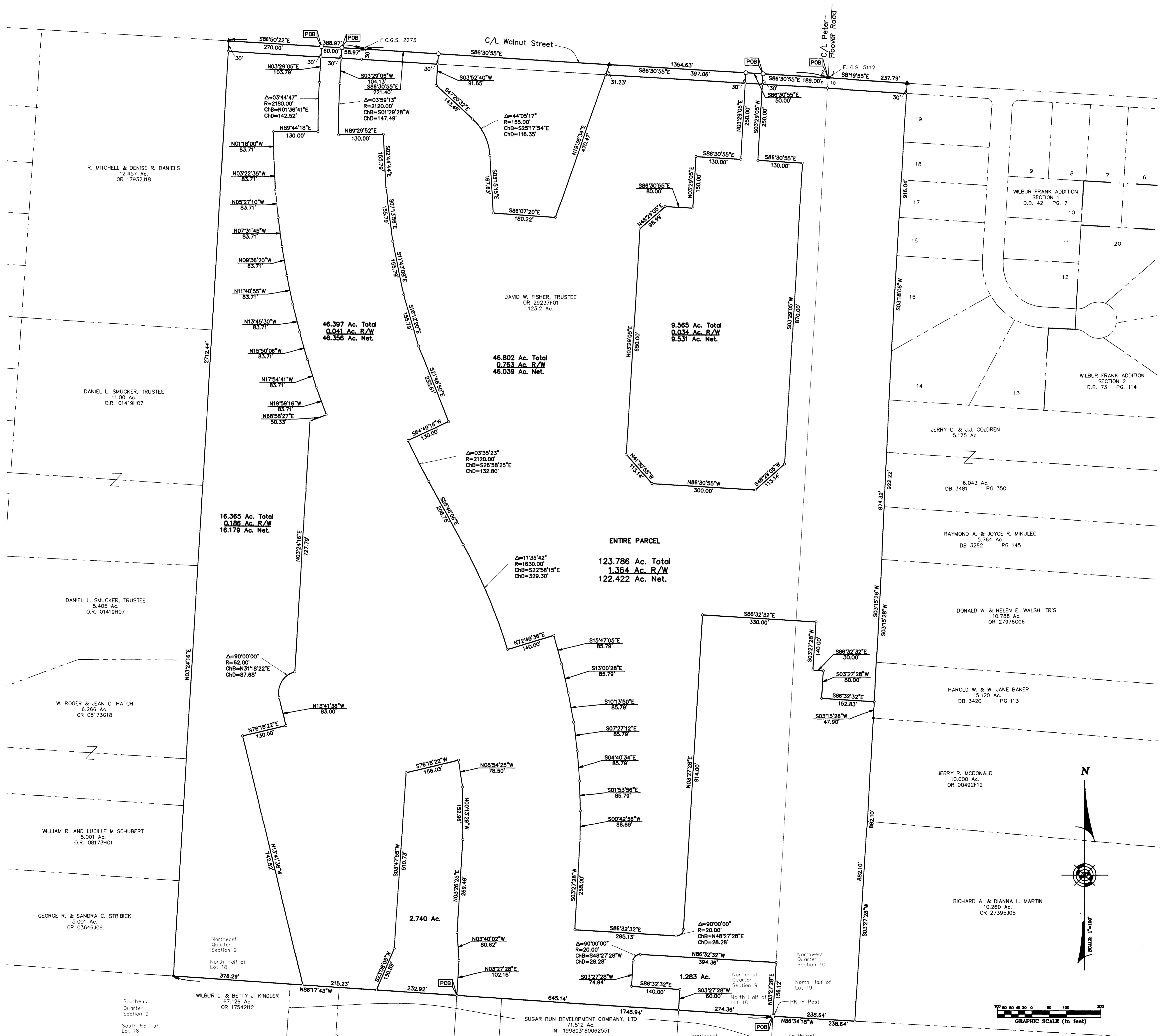


**SURVEY OF ACREAGE PARCELS**  
**LOCATED IN NORTH HALF OF LOT 18 AND LOT 19, NORTHEAST QUARTER OF SECTION 9,**  
**NORTHWEST QUARTER OF SECTION 10, QUARTER TOWNSHIP 1, TOWNSHIP 2, RANGE 16**  
**UNITED STATES MILITARY LANDS**  
**VILLAGE OF NEW ALBANY, FRANKLIN COUNTY, OHIO**



BASIS OF BEARINGS: Bearings are based on the Ohio State Plane Coordinate System as per NAD83. Control for bearings was from coordinates of monuments numbers, 2206 to 2207 having a bearing of N 32°3'06" E, established by the Franklin County Engineering Department, using Global Positioning System procedures and equipment.

- P.K. Nail Fnd.
- P.K. Nail Set
- ▲ R.R. Spk. Fnd.
- △ R.R. Spk. Set
- I.P. Fnd.
- I.P. Set

I.P. set are 3/4" O.D. Iron Pin  
 30" long w/ cap inscribed EMH&T

LUNDY & BETTY P. WILLIAMSON  
 DB 3577 PG 240



EMH&T, INC.  
 Professional Surveyor No. 7868

EMH&T, INC.  
 CONSULTING ENGINEERS & SURVEYORS  
 GABARRA, OHIO 43034  
 SCALE 1" = 100'  
 DATE: 8/17/98