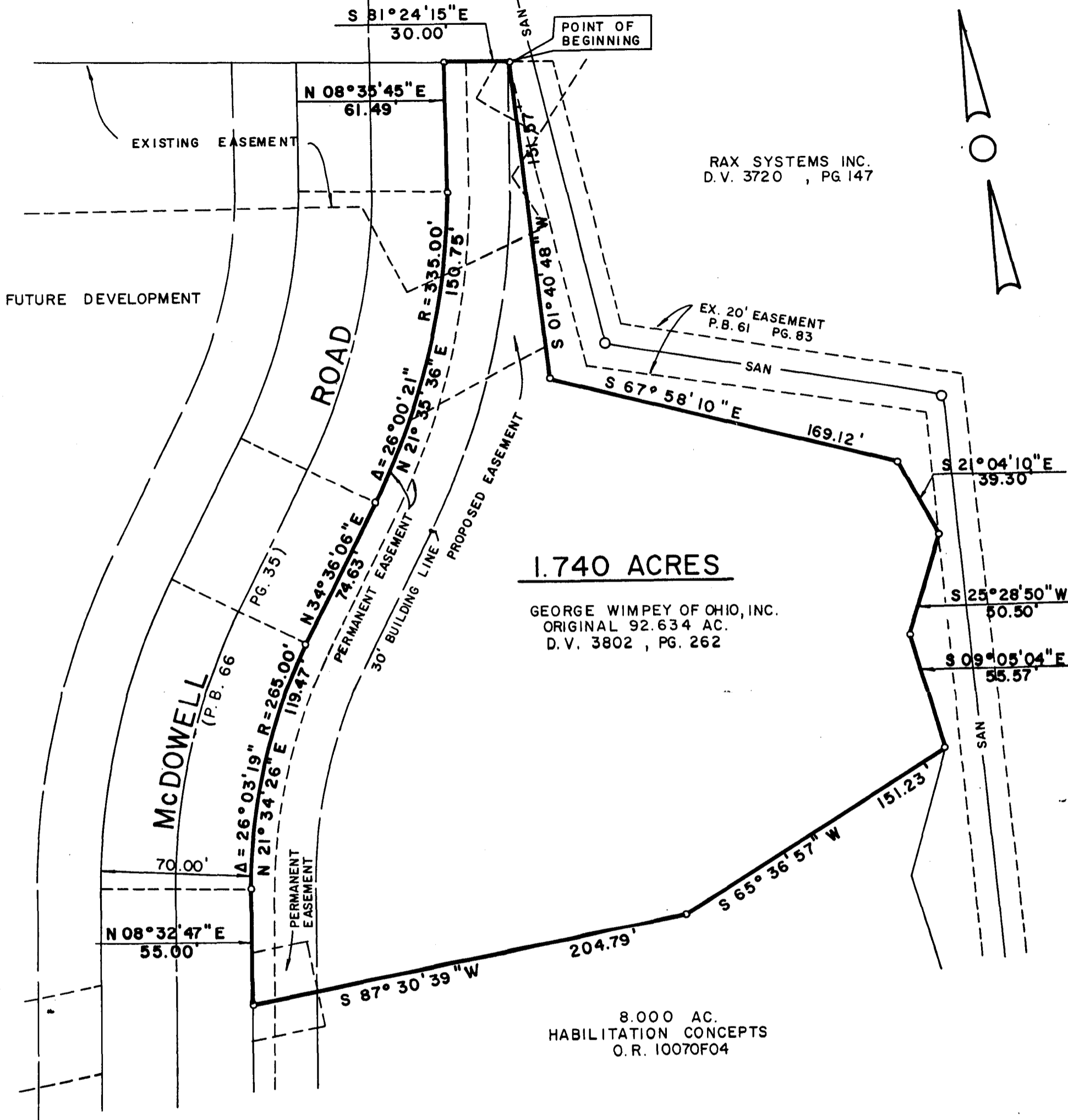


STRINGTOWN ROAD



1.740 ACRES

GEORGE WIMPEY OF OHIO, INC.  
ORIGINAL 92.634 AC.  
D.V. 3802, PG. 262

8.000 AC.  
HABILITATION CONCEPTS  
O.R. 10070F04

SURVEY OF  
1.740 ACRES  
PART OF V.M.S. NO. 8231  
CITY OF GROVE CITY, OHIO

SCALE: 1" = 50' NOVEMBER 1987

PREPARED BY:

R. D. ZANDE & ASSOCIATES, LTD.



*Larry W. Pennington*  
 REGISTERED SURVEYOR NO. 6096