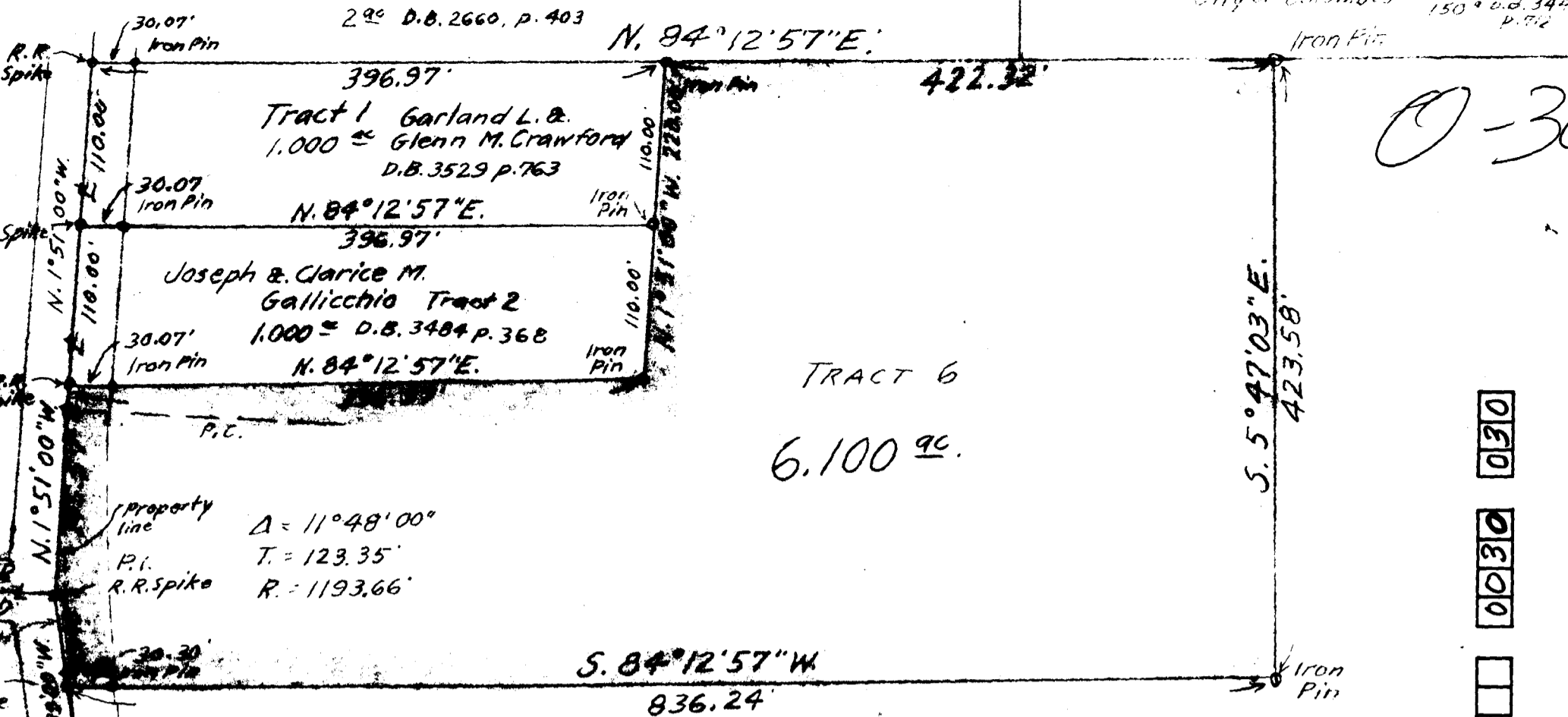


James G. & Ethel M. Stone
2nd D.B. 2660, p. 403

City of Columbus 150th D.B. 3447
p. 52

N. 84°12'57"E



TRACT 6
6.100^{ac}

0-30

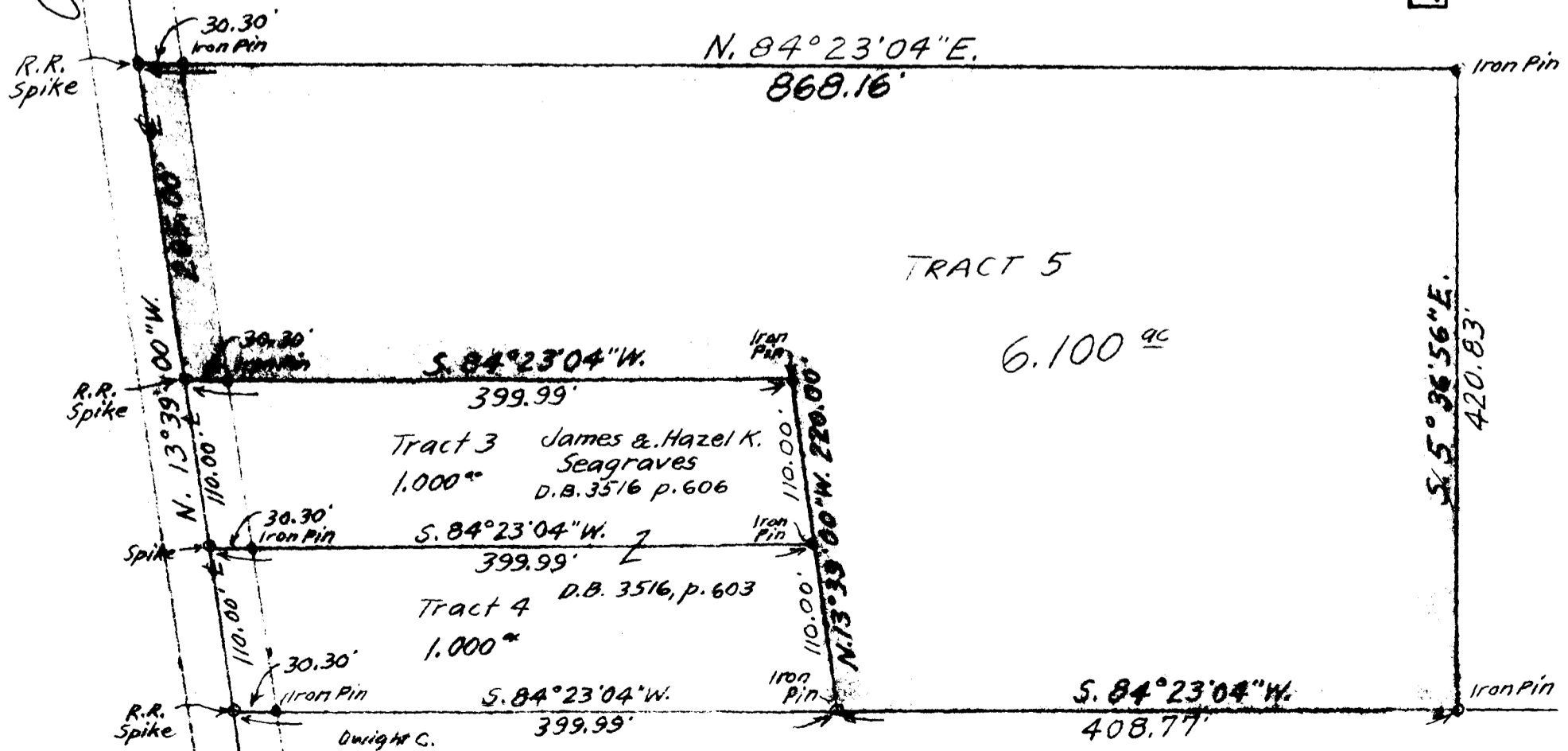
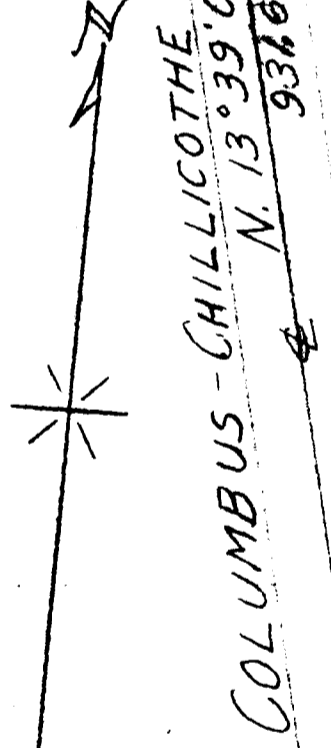
2150 120 032 092 E JACKSON PIKE

S. 84°12'57"W
836.24'

Investors & Executives Financial Services, Inc.

Original.. 188.143^{ac}

Deed Bk. 3318 pg. 649



TRACT 5
6.100^{ac}

S. 5°36'56"E.
420.83'

Reference:
Being part of a 188.143^{ac} tract as conveyed
to Investors & Executives Financial Services, Inc.
as recorded in Deed Bk. 3318, pg. 649, Franklin
County, Ohio records.

F. K. Harvey
Registered Surveyor No. 2570

SURVEY OF TRACTS 5 & 6 each 6.100^{ac}
VIRGINIA MILITARY SURVEY No. 1108
JACKSON TWP. FRANKLIN COUNTY, OHIO
Scale; 1" = 100'
Nov. 1976
Surveyed for -- Investors & Executives Financial Services, Inc.