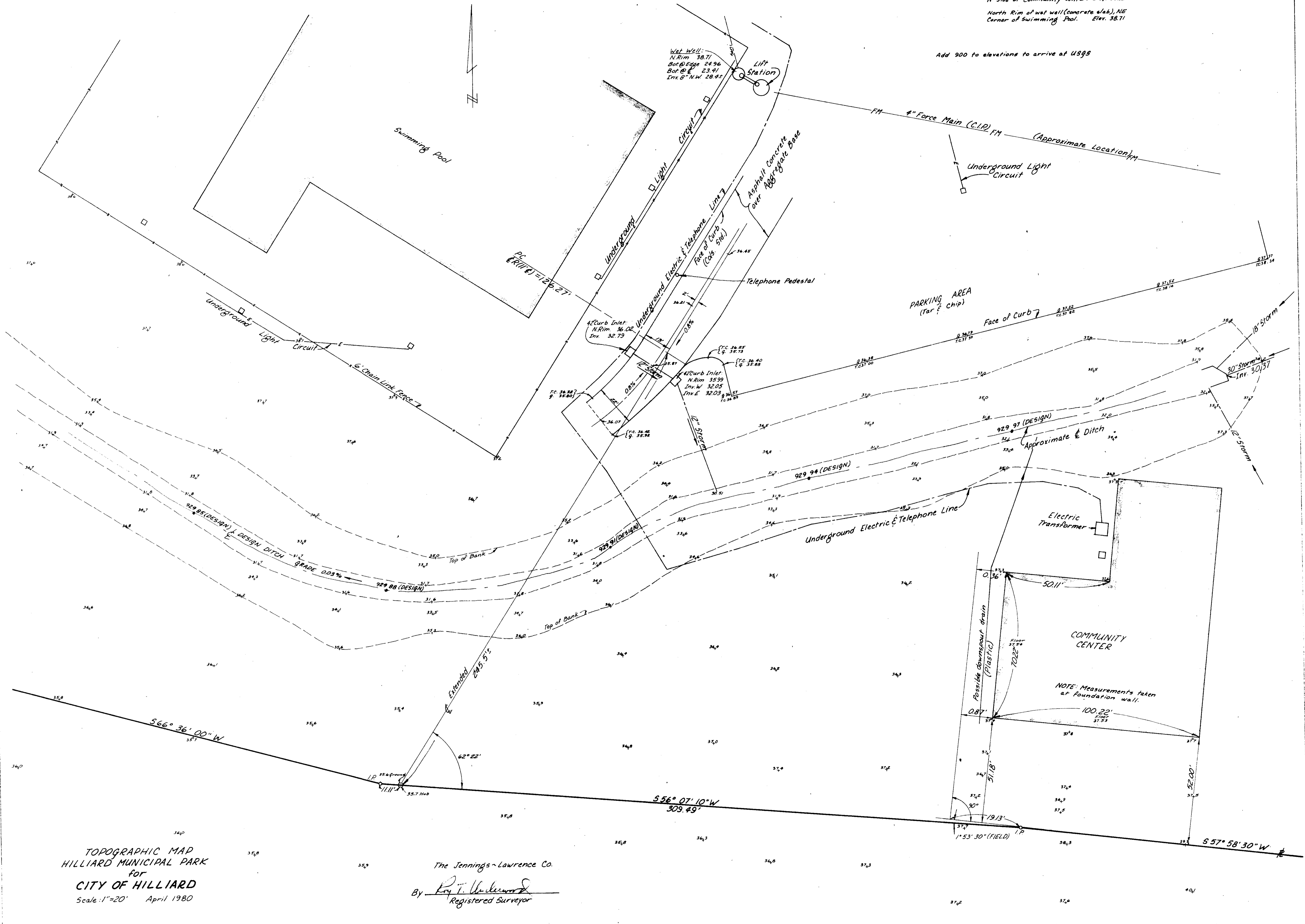


BENCH MARKS: Chiseled square at NW end of headwall,
N Side of Community Center. Elev. 33.12
North Rim of wet wall (concrete slab), NE
Corner of Swimming Pool. Elev. 38.71

Add 900 to elevations to arrive at USGS



TOPOGRAPHIC MAP
HILLIARD MUNICIPAL PARK
for
CITY OF HILLIARD
Scale: 1"=20' April 1980

The Jennings-Lawrence Co.
By Roy T. Underwood
Registered Surveyor