

SURVEY
OF
PROPOSED RELOCATED HOOVER ROAD
Located In
Virginia Military Survey Nos. 1434, 6115 & 14081
Jackson Township, Franklin County, Ohio

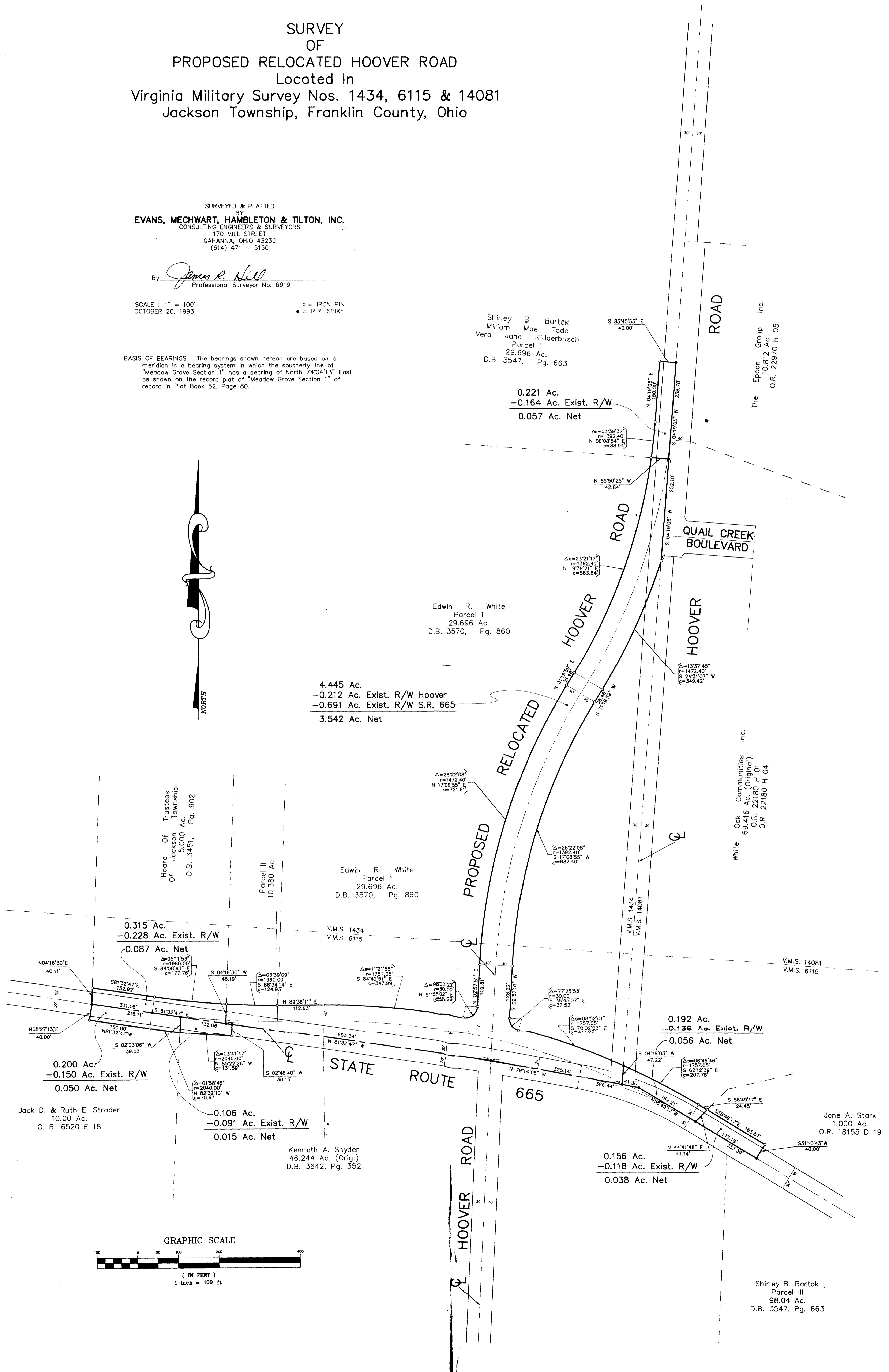
SURVEYED & PLATTED
BY
EVANS, MECHWART, HAMBLETON & TILTON, INC.
CONSULTING ENGINEERS & SURVEYORS
170 MILL STREET
GAHANNA, OHIO 43230
(614) 471 - 5150

By James R. Hill
Professional Surveyor No. 6919

SCALE: 1" = 100'
OCTOBER 20, 1993

○ = IRON PIN
● = R.R. SPIKE

BASIS OF BEARINGS: The bearings shown herein are based on a meridian in a bearing system in which the southerly line of "Meadow Grove Section 1" has a bearing of North 74°04'13" East as shown on the record plat of "Meadow Grove Section 1" of record in Plat Book 52, Page 80.



Shirley B. Bartok
Miriam Mae Todd
Vera Jane Ridderbusch
Parcel 1
29.696 Ac.
D.B. 3547, Pg. 663

0.221 Ac.
-0.164 Ac. Exist. R/W
0.057 Ac. Net

Edwin R. White
Parcel 1
29.696 Ac.
D.B. 3570, Pg. 860

4.445 Ac.
-0.212 Ac. Exist. R/W Hoover
-0.691 Ac. Exist. R/W S.R. 665
3.542 Ac. Net

Board Of Trustees
Of Jackson Township
5,000 Ac.
D.B. 3451, Pg. 902

Parcel II
10,380 Ac.

Edwin R. White
Parcel 1
29.696 Ac.
D.B. 3570, Pg. 860

V.M.S. 1434
V.M.S. 6115

0.315 Ac.
-0.228 Ac. Exist. R/W
0.087 Ac. Net

0.200 Ac.
-0.150 Ac. Exist. R/W
0.050 Ac. Net

Jack D. & Ruth E. Strader
10.00 Ac.
O. R. 6520 E 18

0.106 Ac.
-0.091 Ac. Exist. R/W
0.015 Ac. Net

Kenneth A. Snyder
46.244 Ac. (Orig.)
D.B. 3642, Pg. 352

0.192 Ac.
-0.136 Ac. Exist. R/W
0.056 Ac. Net

0.156 Ac.
-0.118 Ac. Exist. R/W
0.038 Ac. Net

Jane A. Stark
1.000 Ac.
O.R. 18155 D 19

Shirley B. Bartok
Parcel III
98.04 Ac.
D.B. 3547, Pg. 663

The Epcon Group Inc.
10.812 Ac.
O.R. 22970 H 05

White Oak Communities Inc.
69.416 Ac. (Original)
O.R. 22180 H 01
O.R. 22180 H 04

GRAPHIC SCALE

