

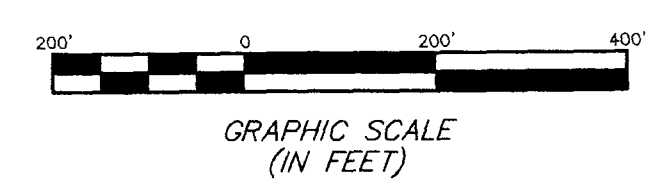
**SURVEY OF ACREAGE PARCEL**  
**SECTION 22, TOWNSHIP 4, RANGE 22**  
**CONGRESS LANDS**  
 TOWNSHIP OF HAMILTON, FRANKLIN COUNTY, OHIO



- ① S86°06'23"E  
5.00'
- ② N03°53'37"E  
50.00'
- ③ N86°06'23"W  
5.00'
- ④ N03°53'37"E  
175.00'
- ⑤ N86°06'23"W  
40.00'

LEGEND	
■ = Water Meter	⊠ = Traffic Lighting Pull Box
⊠ = Flag Pole	⊙ = Telephone Marker Post
⊠ = Utility Pole	⊙ = Gas Marker Post
⊠ = Power Pole	⊙ = Electric Meter
⊠ = Telephone Pole	⊙ = Gas Meter
⊠ = Electric Tower	⊙ = Gas Service
⊠ = Guy Wire	⊙ = Electric Outlet
⊠ = Light pole	⊙ = Guy Pole
⊠ = Water Valve	⊙ = Fence
⊠ = Gas Meter	⊙ = Sign
⊠ = Gas Valve	⊙ = Mail Box
⊠ = Electric Transformer	⊙ = Air Condition Unit
⊠ = Telephone Pedestal	⊙ = Storm Sewer Surface Inlet
⊙ = Sprinkler	⊙ = Storm Manhole
⊙ = Fire Hydrant	⊙ = Sanitary Manhole
⊙ = Cable Pedestal	— W — = Water Line
⊙ = Catch Basin	— G — = Gas Line
⊙ = Curb Inlet	— STM — = Storm Line
⊙ = Ballard	— SAN — = Sanitary Line
⊙ = Yard Light	— UGE — = Underground Electric
⊙ = Electric Pull Box	— DHE — = Overhead Electric
⊙ = Electric Outlet	— UGT — = Underground Telephone
⊙ = Telephone Booth/for Drive-Up	— T — = Overhead Telephone
⊙ = Electric Pedestal	— CATV — = Cable TV
⊙ = Storm Sewer Surface Inlet	— C — = Centerline
⊙ = Metal Traffic Signal Pole	— R/W — = Right of Way Line

- = MON. FND.
  - = I.P. FND.
  - = I.P. SET
  - = MAG. NAIL FND.
  - = MAG. NAIL SET
  - ▲ = R.R. SPK. FND.
  - ▲ = R.R. SPK. SET
  - = P.K. NAIL FND.
- I.P.S. Set are 1 3/16" I.D. Iron pipe w/ cap inscribed EMHT INC



**BASIS OF BEARINGS:** Bearings are based on the Ohio State Plane Coordinate System as per NAD83. Control for bearings was from coordinates of monuments 5556 & 9980, established by Franklin County Engineering Department, using Global Positioning System procedures and equipment.

**UTILITY STATEMENT:**  
 The utilities shown hereon have been located from field survey information and existing drawings. The surveyor makes no guarantee that the utilities shown comprise all such utilities in the area, either in service or abandoned. The surveyor further does not warrant that the utilities shown are in the exact location indicated although he does certify that they are located as accurately as possible from information available.

According to the Federal Emergency Management Agency's Flood Insurance Rate Map (dated August 2, 1995), the subject parcel shown hereon lies within Zone X (areas determined to be outside 500-year flood plain), Community Panel No. 39049C03556.

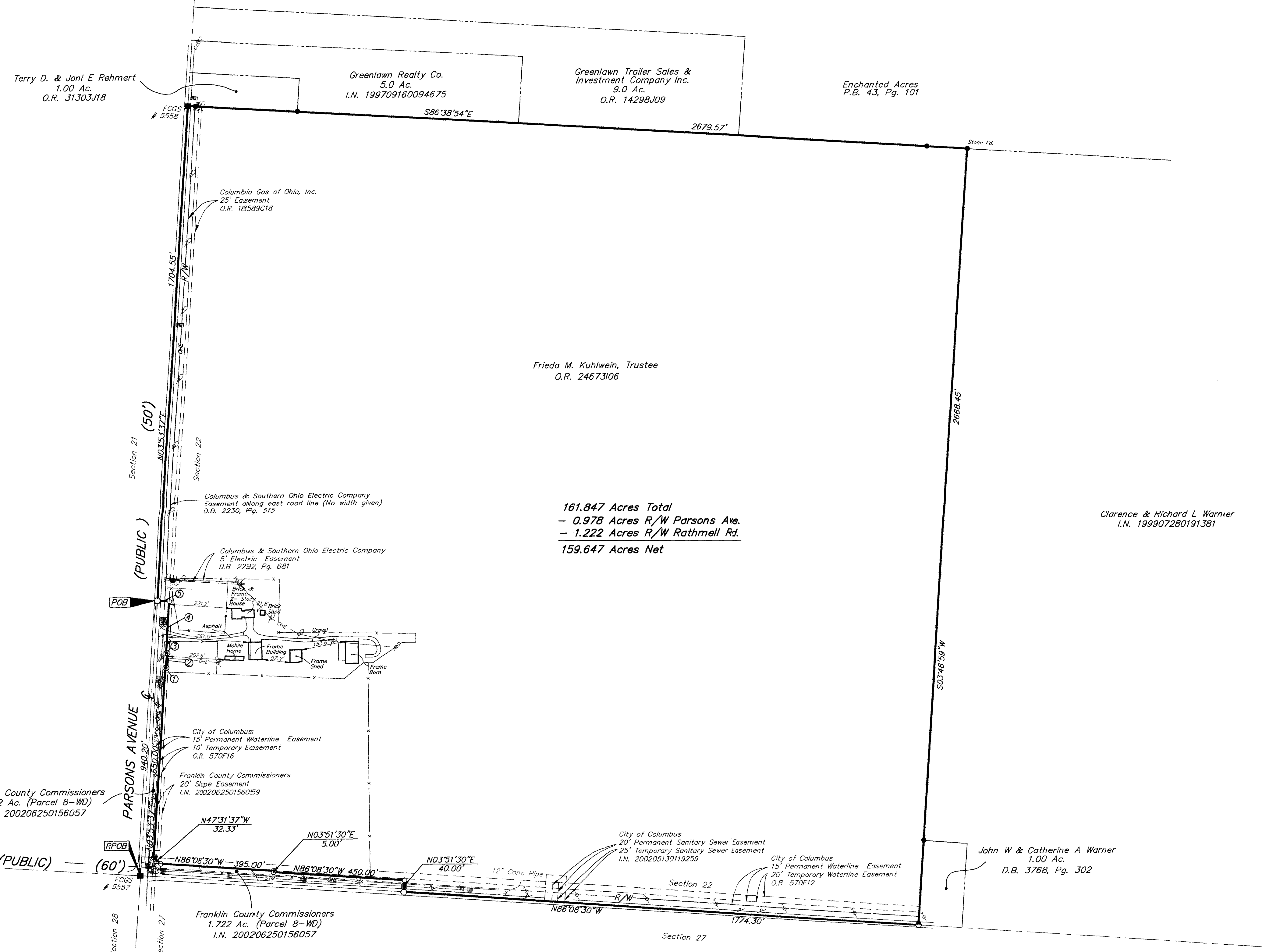
Note:  
 Zoning information was not made available to the undersigned as of the date of this survey.



**CERTIFICATION:** (Commitment No. 75148862)  
 To: Duke Realty Limited Partnership & Title First Agency, Inc.  
 This is to certify, to the best of my knowledge, information and belief, that this map and the survey on which it is based were made in accordance with "Minimum Standard Detail Requirements for ALTA/ACSM and NSPS in 1999", and includes items 1, 3, 4, 8 11(a), 11(b) & 13 of Table A "Optional Survey Responsibilities & Specification" thereof, and pursuant to the Accuracy Standards as adopted by ALTA, ACSM & NSPS in effect on the date of this certification.

By *Clark E. White* 7/29/02  
 Professional Surveyor No. 7868

SCALE: 1" = 200' JULY 25, 2002



**161.847 Acres Total**  
**- 0.978 Acres R/W Parsons Ave.**  
**- 1.222 Acres R/W Rathmell Rd.**  
**159.647 Acres Net**

Clarence & Richard L. Warner  
 I.N. 199907280191381

Franklin County Commissioners  
 1.722 Ac. (Parcel 8-WD)  
 I.N. 200206250156057

Franklin County Commissioners  
 1.722 Ac. (Parcel 8-WD)  
 I.N. 200206250156057

John W & Catherine A Warner  
 1.00 Ac.  
 D.B. 3768, Pg. 302

SURVEYED & PREPARED BY  
**EMHT** INC.  
 CONSULTING ENGINEERS & SURVEYORS  
 170 MILL STREET  
 COLUMBUS, OHIO 43230  
 (614) 471-5150

G:\PROJECTS\2002\1064\DWG - 0 - PLOTS - 0 - PLOTS BY: MACLEIN - July 25, 2002 - 3:26 PM