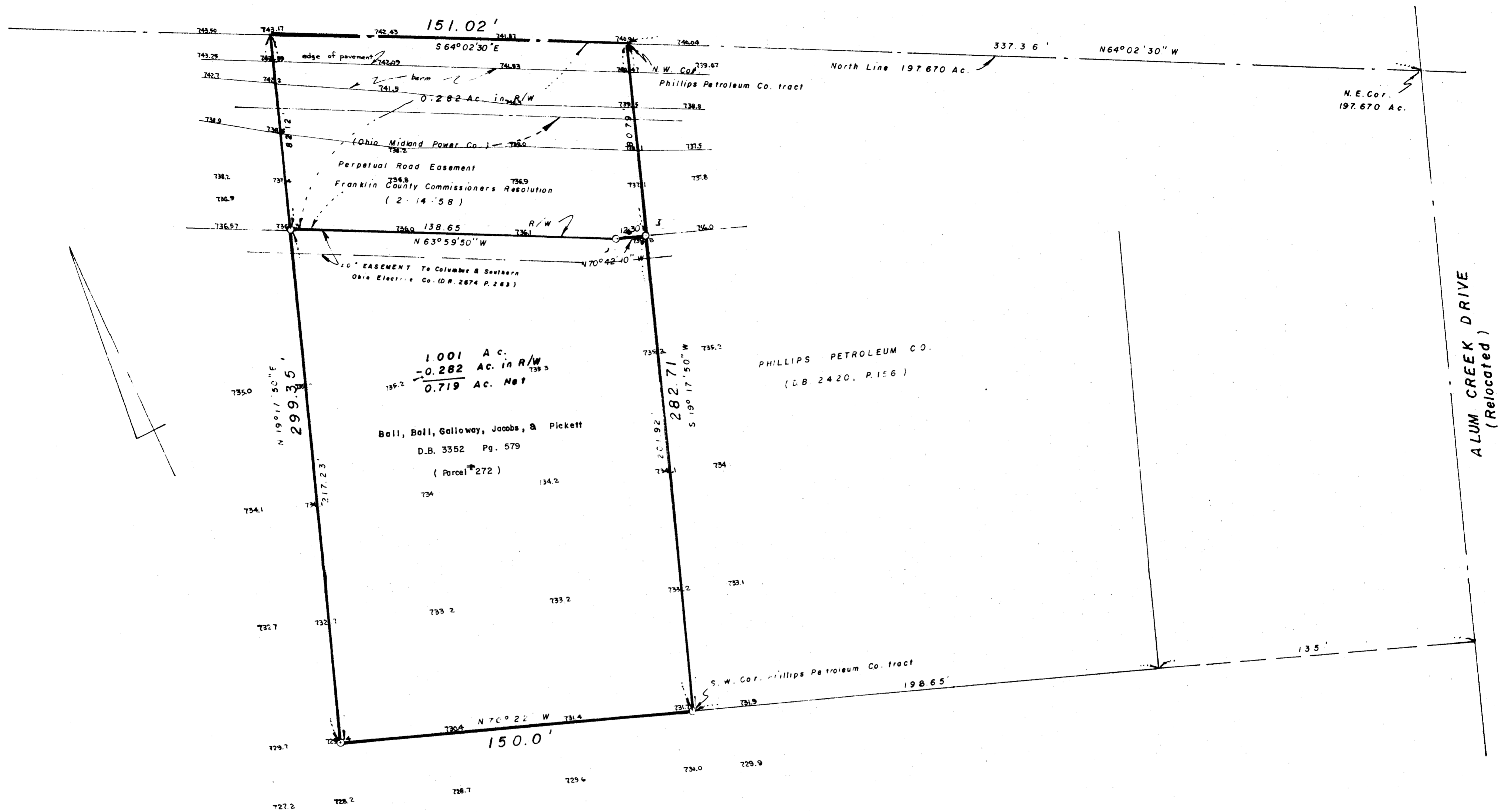


GROVEPORT

PIKE



Survey of a 1.001 Acre tract (0.719 Acres to R/W line), being part of the 197.670 Acre tract conveyed to Ball, Curtis, Galloway and Kuhn, (D.B. 2860, Pg. 60), and being situated in the East half of Section 24, Township 4, Range 22, Congress Lands, Village of Obetz, Ohio

For

BALL, BALL, GALLOWAY, & JACOBS

This survey is subject to all highways and easements of record, and of records, easements, and restrictions in the respective utility offices.

I hereby certify that the foregoing plat represents a true return of survey made by me in October, 1972

by *A.O. Myers, Jr.*
A.O. MYERS, JR. Registered Surveyor #3352
MYERS SURVEYING COMPANY
Civil Engineers and Surveyors
Columbus, Ohio

Scale 1" = 30' October 30, 1972
Revised December 15, 1972 To show taps.