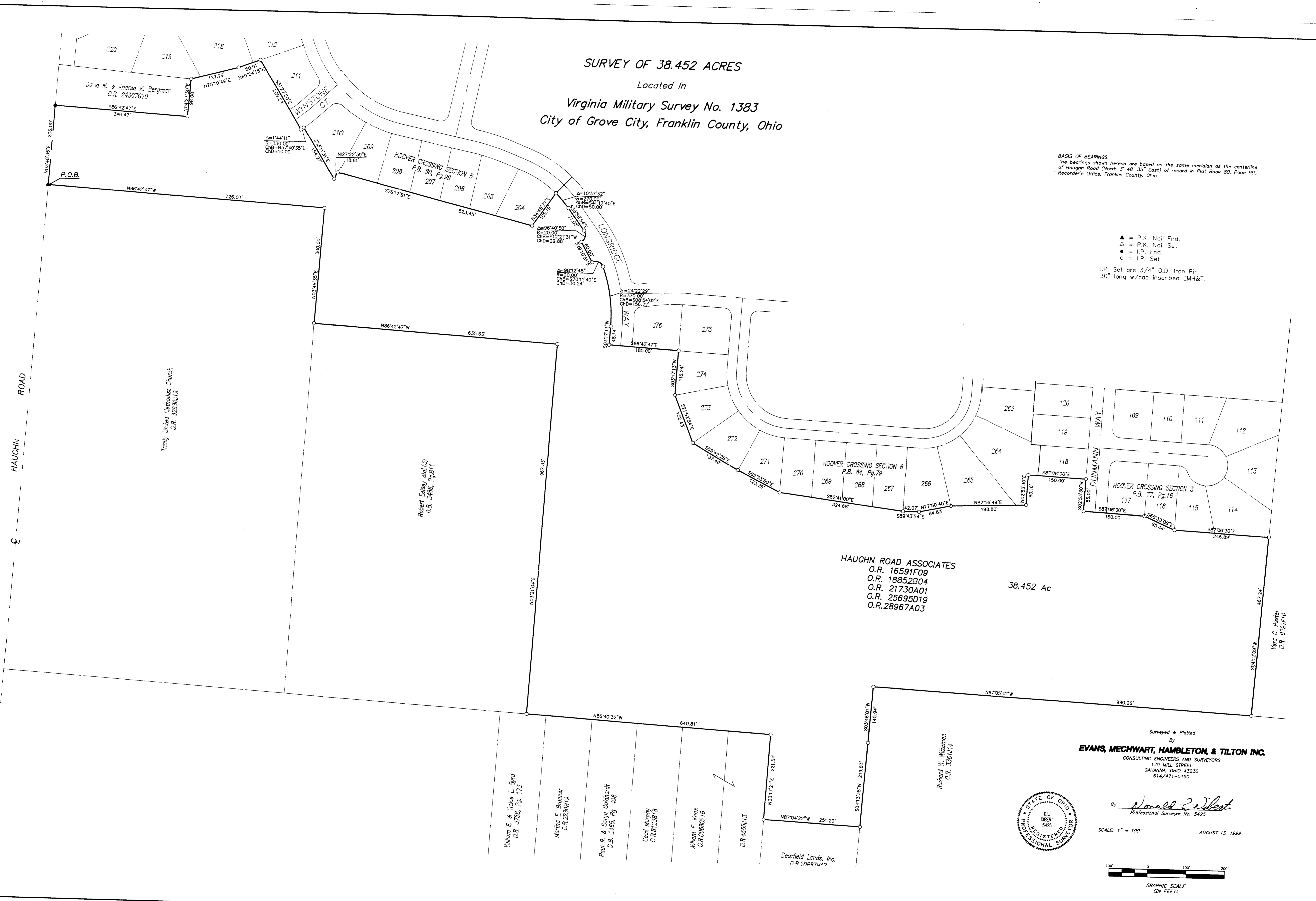


SURVEY OF 38.452 ACRES
 Located In
Virginia Military Survey No. 1383
City of Grove City, Franklin County, Ohio

BASIS OF BEARINGS:
 The bearings shown hereon are based on the same meridian as the centerline of Haughn Road (North 3° 48' 35" East) of record in Plat Book 85, Page 99, Recorder's Office, Franklin County, Ohio.

▲ = P.K. Nail Fnd.
 △ = P.K. Nail Set
 ● = I.P. Fnd.
 ○ = I.P. Set
 I.P. Set are 3/4" O.D. Iron Pin
 30" long w/cap inscribed EMH&T.



HAUGHN ROAD ASSOCIATES
 O.R. 16591F09
 O.R. 18852B04
 O.R. 21730A01
 O.R. 25695D19
 O.R. 28967A03

38.452 Ac

Surveyed & Plotted
 By
EVANS, MECHWART, HAMBLETON, & TILTON INC.
 CONSULTING ENGINEERS AND SURVEYORS
 170 MILL STREET
 COLUMBUS, OHIO 43230
 614/471-5150

By *Donald R. Gilbert*
 Professional Surveyor No. 5425

SCALE: 1" = 100' AUGUST 13, 1999

