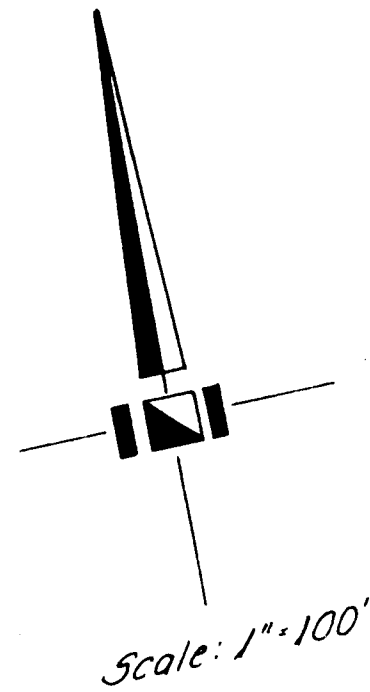
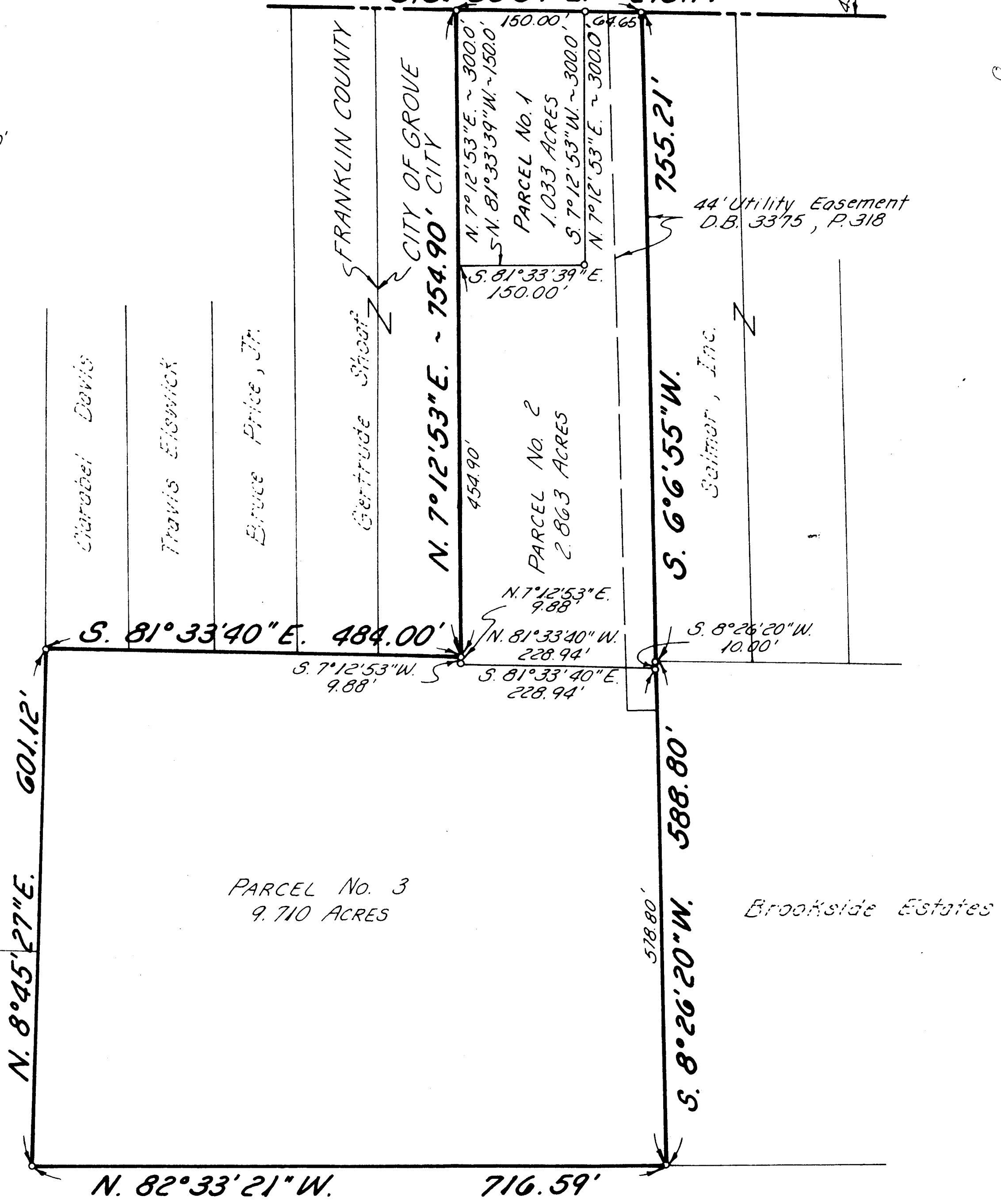


PLAT OF A 13.606 ACRE TRACT CONTAINING 3 PARCELS FOR JIM POENISCH



E STRINGTOWN ROAD
S. 81°33'39"E. ~ 213.79'

0-32-F
1280
GROVE CITY
13,768 AC.



Mary J. Norris
Charles L. & Esther E. Geyer

This Plat was prepared from an actual field survey made by Bischoff & Associates, Inc.; on July 16, 1973.

Paul K. Moore
Paul K. Moore ~ Registered Surveyor ~ No. 5883

Prepared By:
BISCHOFF & ASSOCIATES, INC
CONSULTING ENGINEERS
3353 N. BROADWAY
GROVE CITY, OHIO

41360 120 056 025 E 400 VER RD 1975 0926 090