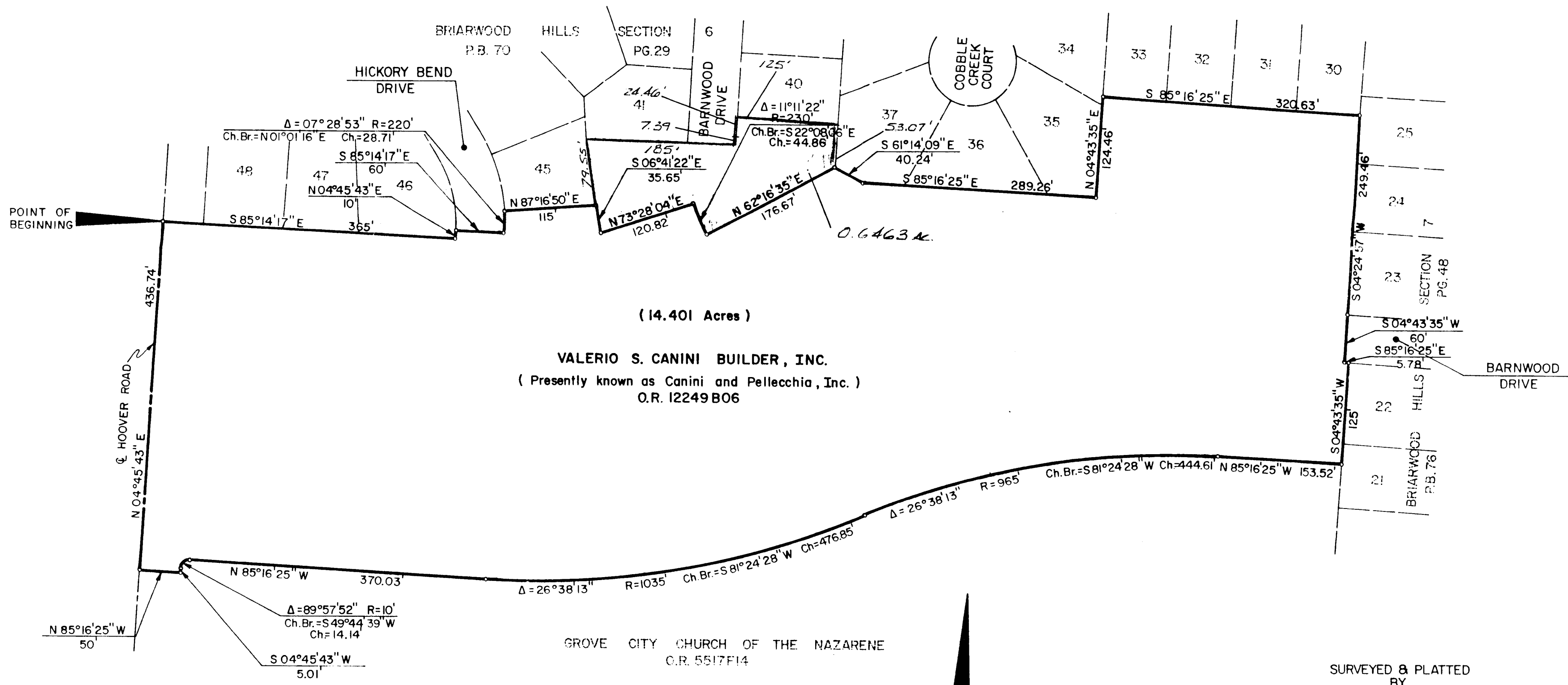


PLAT OF 14.401 ACRE PARCEL

LOCATED IN VIRGINIA MILITARY SURVEY NO. 6840
CITY OF GROVE CITY, FRANKLIN COUNTY, OHIO



SURVEYED & PLATTED
BY
EVANS, MECHWART, HAMBLETON & TILTON, INC.
CONSULTING ENGINEERS & SURVEYORS
170 MILL STREET
GAHANNA, OHIO 43230
(614) 471 - 5150

By *Lawrence S. Gal*
Professional Surveyor No. 6878



BASIS OF BEARINGS
The bearings in the above description are based upon the bearings of record for that plat entitled "Briarwood Hills Section 6" of record in Plat Book 70, Page 29.