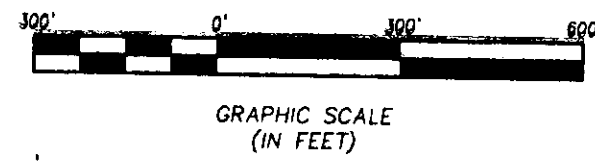
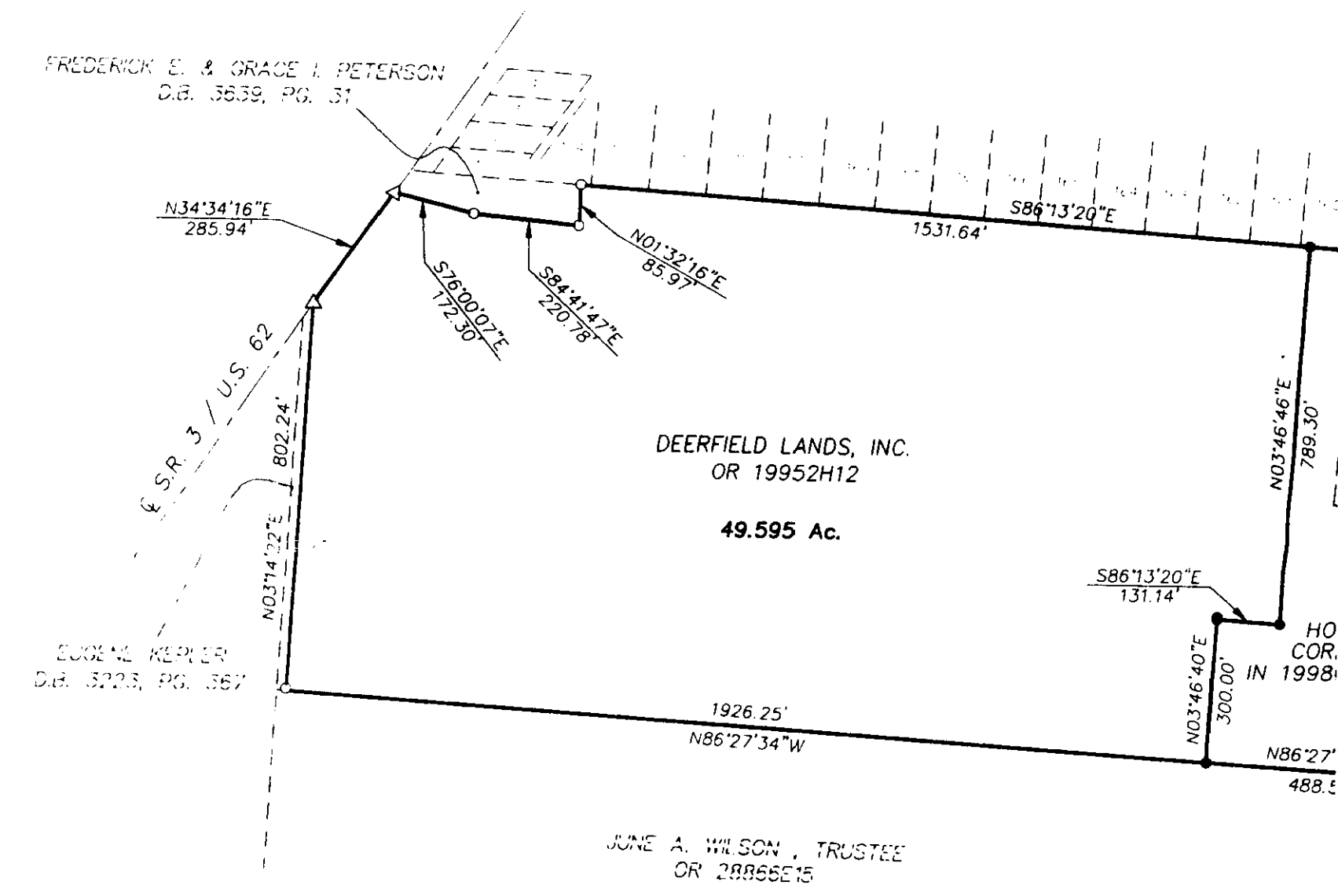


SURVEY OF ACREAGE PARCEL
) LOCATED IN
 VIRGINIA MILITARY SURVEY NO. 1383
 CITY OF GROVE CITY, FRANKLIN COUNTY, OHIO



- ▲ R.R. Spk. Fnd.
- △ R.R. Spk. Set
- I.P. Fnd.
- I.P. Set

asis of Bearing: The bearings shown on this plat are based on the same meridian as the bearings shown on the recorded plat entitled "Hoover Crossing Section 4", of Record in Plat Book 78, Pages 44 and 45, Recorder's Office Franklin County, Ohio.

I.P. set are 13/16" O.D. / 30" long w/cap inscribed