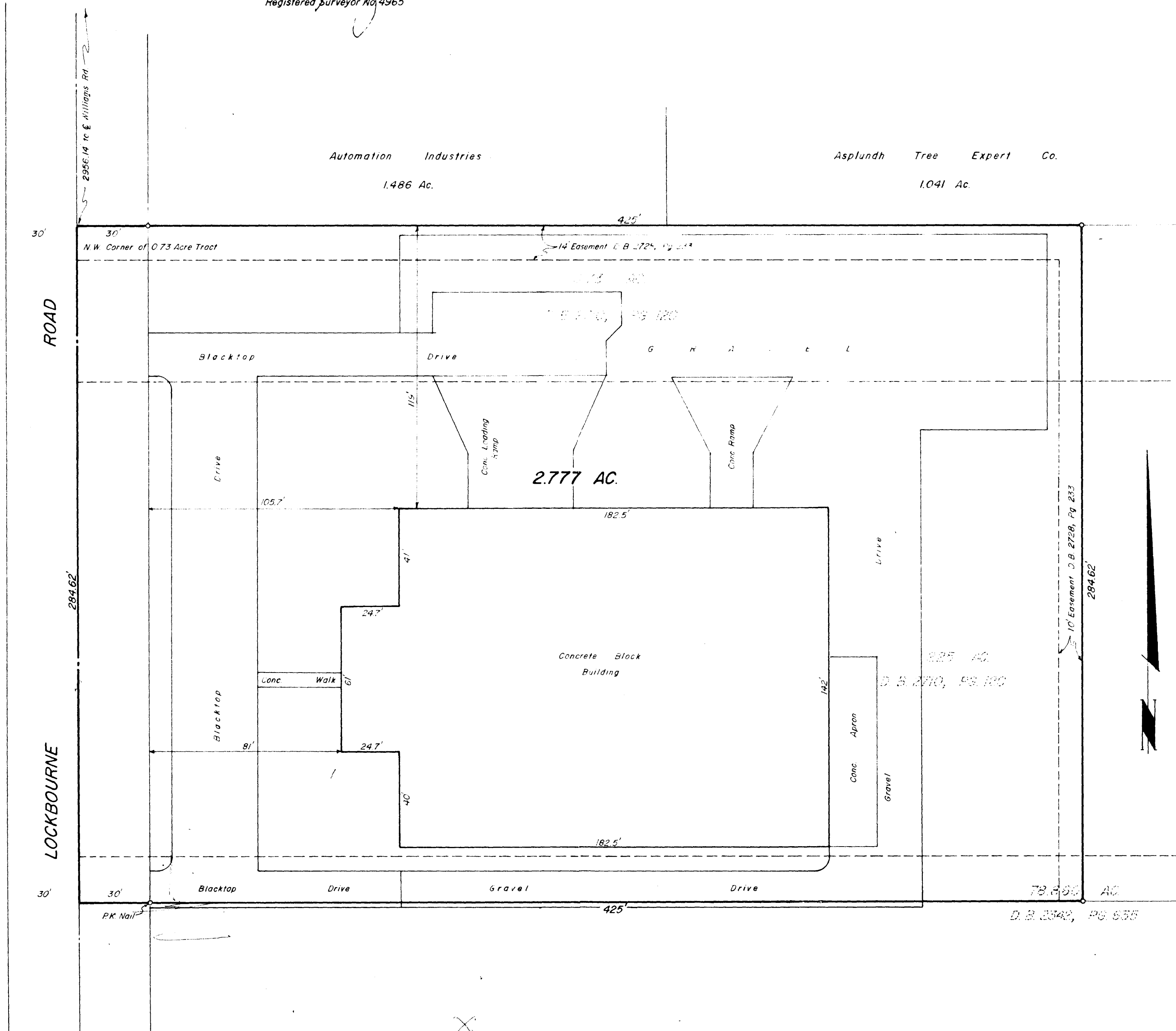


SURVEYED & PLATTED
 By
EVANS, MECHWART, HAMBLETON & TILTON, INC.
 CONSULTING ENGINEERS & SURVEYORS
 SAHANNA, OHIO

FINAL SURVEY OF 2.777 ACRE TRACT
 LOCATED IN SECTION 14, TOWNSHIP 4, RANGE 22
 CONGRESS LANDS
 CITY OF COLUMBUS, FRANKLIN COUNTY, OHIO

Scale: 1" = 30' o=Iron Pin July 12, 1974

By E. E. Maddy
 Registered Surveyor No. 4965



2850 120 118 071 5 WILKINSONS RD 1974 0240 030