

County Auditor
 50 W. W. - 2-3-200
 1683 - 5188.66
 4 - 8291.78
 5 - 8214.68
 6 - 9018.38
 31,493.50

At Time of Sale
 C.A. V. U. VALUATION
 UNREAL

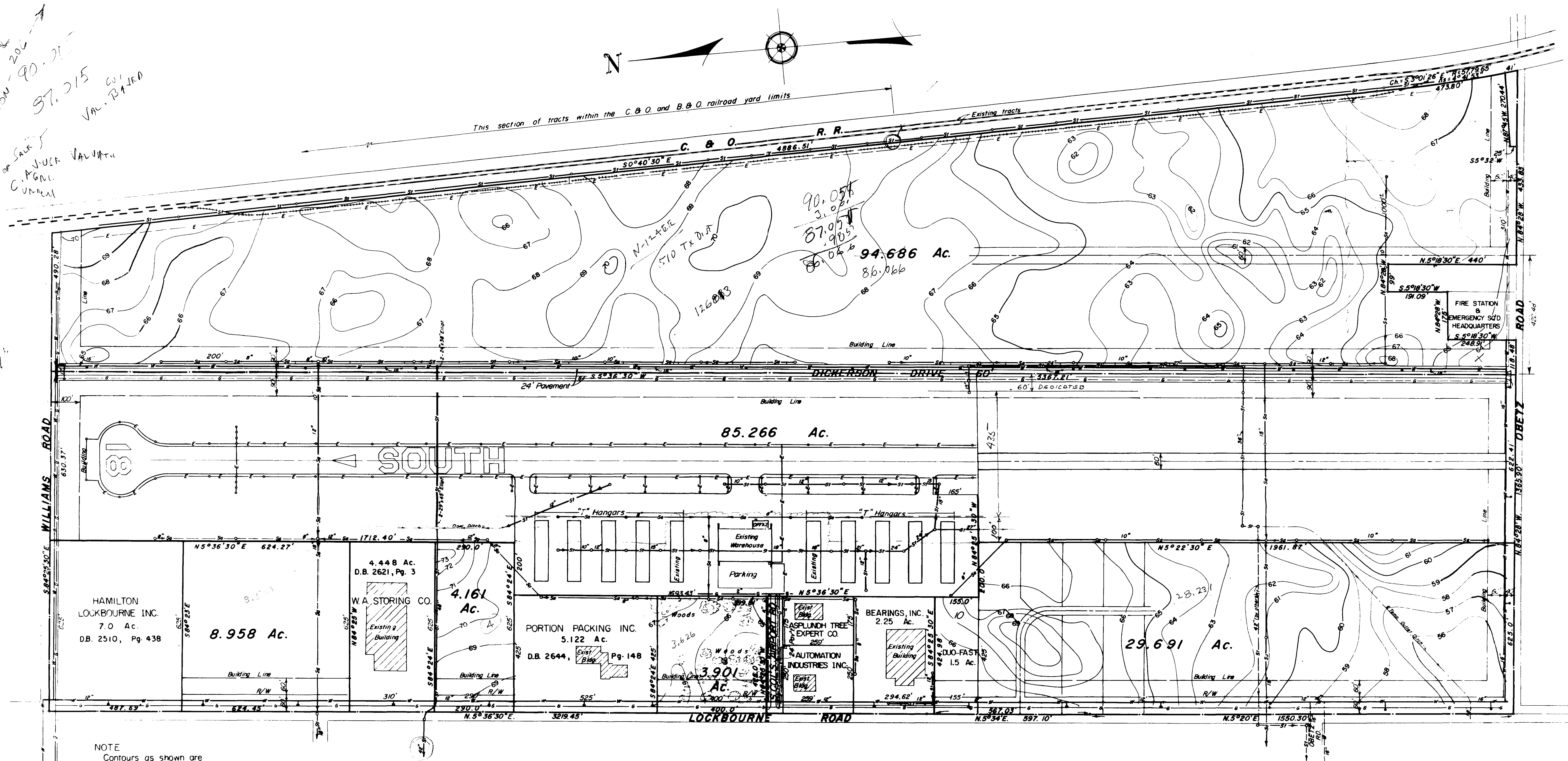
77.015
 90.015
 VAL. RAISED

9018.38
 702.42
 9720.80

200 L. 449
 T.M. W. M. W. W. - 124 Day
 = # 3302-41

31493.50
 3302.41
 34795.91

1-8-76
 APPROVED
 P.P. 53
 M.P. 57
 DIV. OF
 CITY ENG.
 PUB. WORKS



NOTE
 Contours as shown are
 City of Columbus datum
 To convert to U.S.G.S datum
 add 680.35 feet

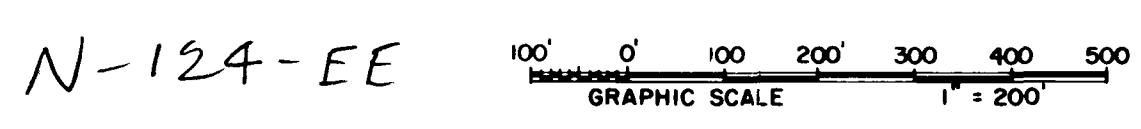
LOCKBOURNE INDUSTRIAL PARK

WALKER T. DICKERSON COMPANY
 COLUMBUS, OHIO

HOLROYD & MYERS - ARCHITECTS

EVANS, MECHWART, HAMBLETON & TILTON, INC. - CONSULTING ENGINEERS

1968



LEGEND

EXISTING UTILITIES	
—S—S—	Sanitary Sewer & Manhole
—SI—SI—	Storm Sewer & Inlet
—W—W—	Water Line & Fire Hydrant
—G—G—	Gas Line
—E—E—	Electric Service, Runway Light
PROPOSED UTILITIES	
—A—A—	Water Line & Fire Hydrant
—G—G—	Gas Line
—E—E—	Electric Service, Runway Light
—T—T—	Telephone Service
—S—S—	Sanitary Sewer & Manhole
—SI—SI—	Storm Sewer & Inlet

Plot Prepared From Surveys By
EVANS, MECHWART, HAMBLETON & TILTON, INC.,
 MYERS SURVEYING CO. & JOHN CIRCLE

By E. E. Madley
 Registered Surveyor No. 9965

I hereby certify that all of the utilities (water, gas, sanitary, electric, storm) and roadways shown as existing hereon are complete and available for use.

By Harold L. Jett 3-27-72
 Harold L. Jett P.E.
 Registered Engineer No. 27352

WALTER C. LESTE & CO.
 REALTORS
 85 EAST GAY STREET, COLUMBUS, OHIO 43215
 464-2077

PLG 002
 L - 237,230
 B - 237,230
 T - 237,230
 TX 1702.42
 86.066
 0.949
 87.015

RE-USED JULY 24, 1977
 RE-SEC. JULY 25, 1977
 REVISED SEPT., 1971
 REVISED APR., 1971

617 2345 T-248 5-470