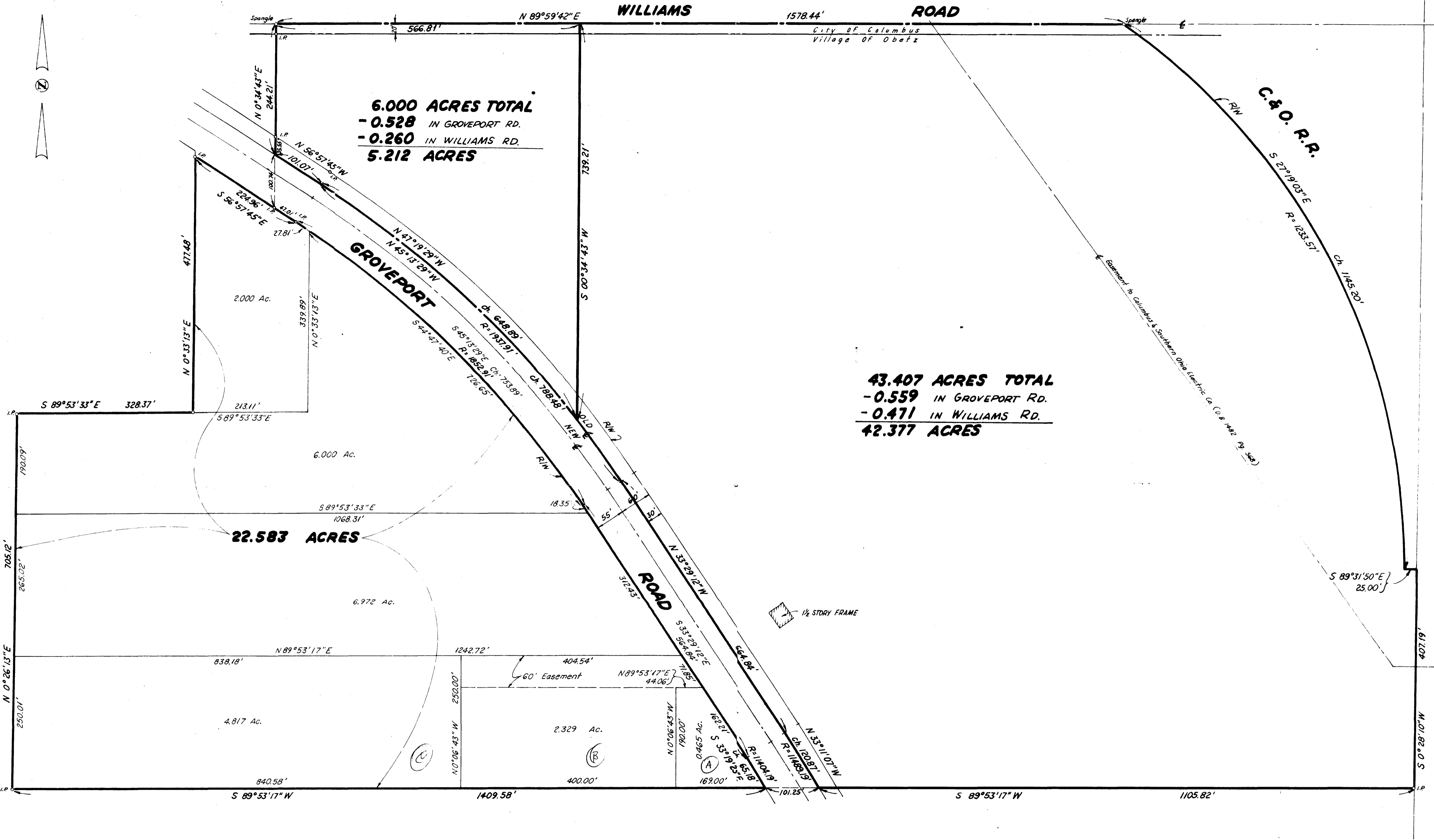


0-24-A

0-24



SURVEY OF
 22.583 & 43.407 ACRE TRACTS
 QTR SEC. 14, TWP. 4 N., R- 22 W., CONGRESS LANDS
 PT. IN VILLAGE OF OBETZ & PT. IN CITY OF COLUMBUS
 FRANKLIN CO. OHIO
 for
KARL HENRY DAWSON

The Jennings-Lawrence Co.
 Civil & Municipal Engineers
 Columbus, Ohio

1890 120 061 686 E GROVEPORT PIKE 1967 0240 03 1" = 100'

Roy T. Underwood
 Registered Surveyor

December 5, 1967

Rev. 6-3-70 To show division of 22.583 Ac. Tract