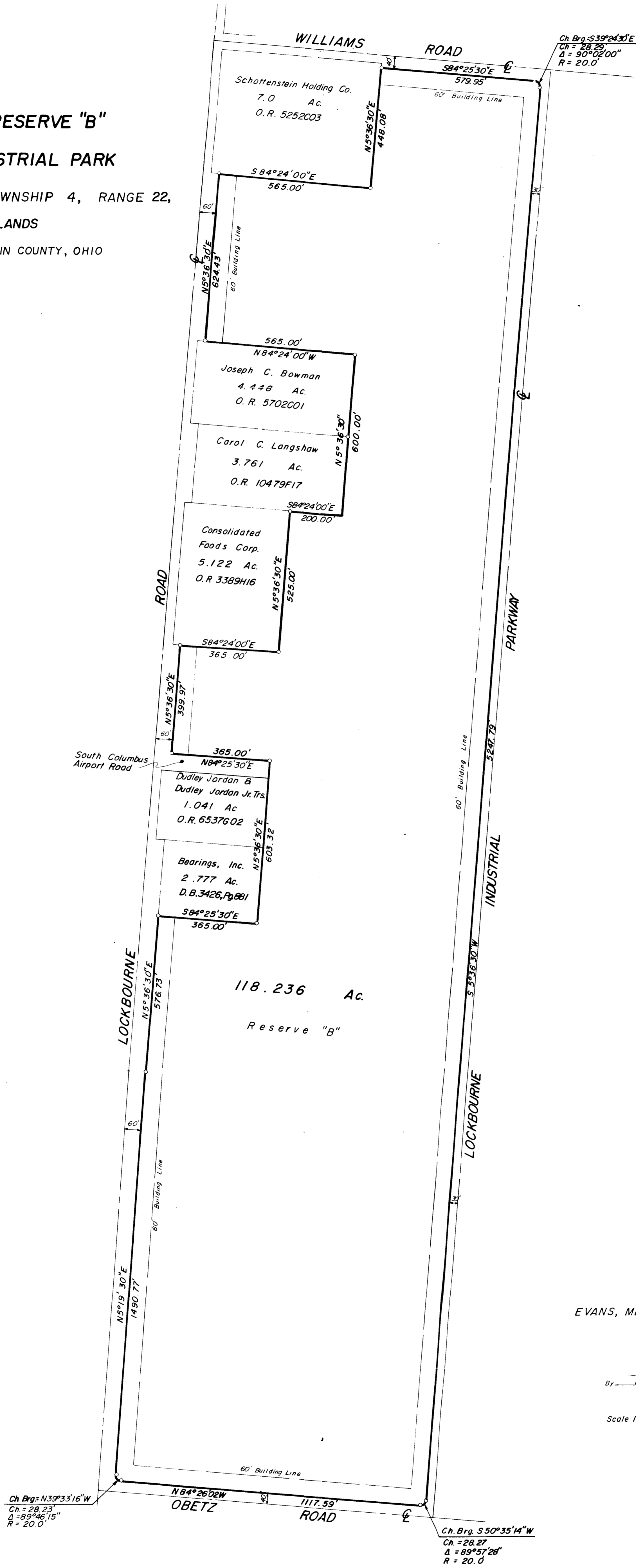


SURVEY OF RESERVE "B"

LOCKBOURNE INDUSTRIAL PARK

LOCATED IN SECTION 14, TOWNSHIP 4, RANGE 22,
CONGRESS LANDS
CITY OF COLUMBUS, FRANKLIN COUNTY, OHIO



NOTE:
The bearings shown hereon are based on the same meridian as the plat of record found in Plat Book 50, Page 57.

Surveyed & Platted
By
EVANS, MECHWART, HAMBLETON & TILTON, INC.
Consulting Engineers & Surveyors
Columbus, Ohio

By Thomas D. Silphall
Registered Surveyor No. 5908

Scale 1" = 200'
Graphic Scale
April 21, 1989

○ = Iron Pin