

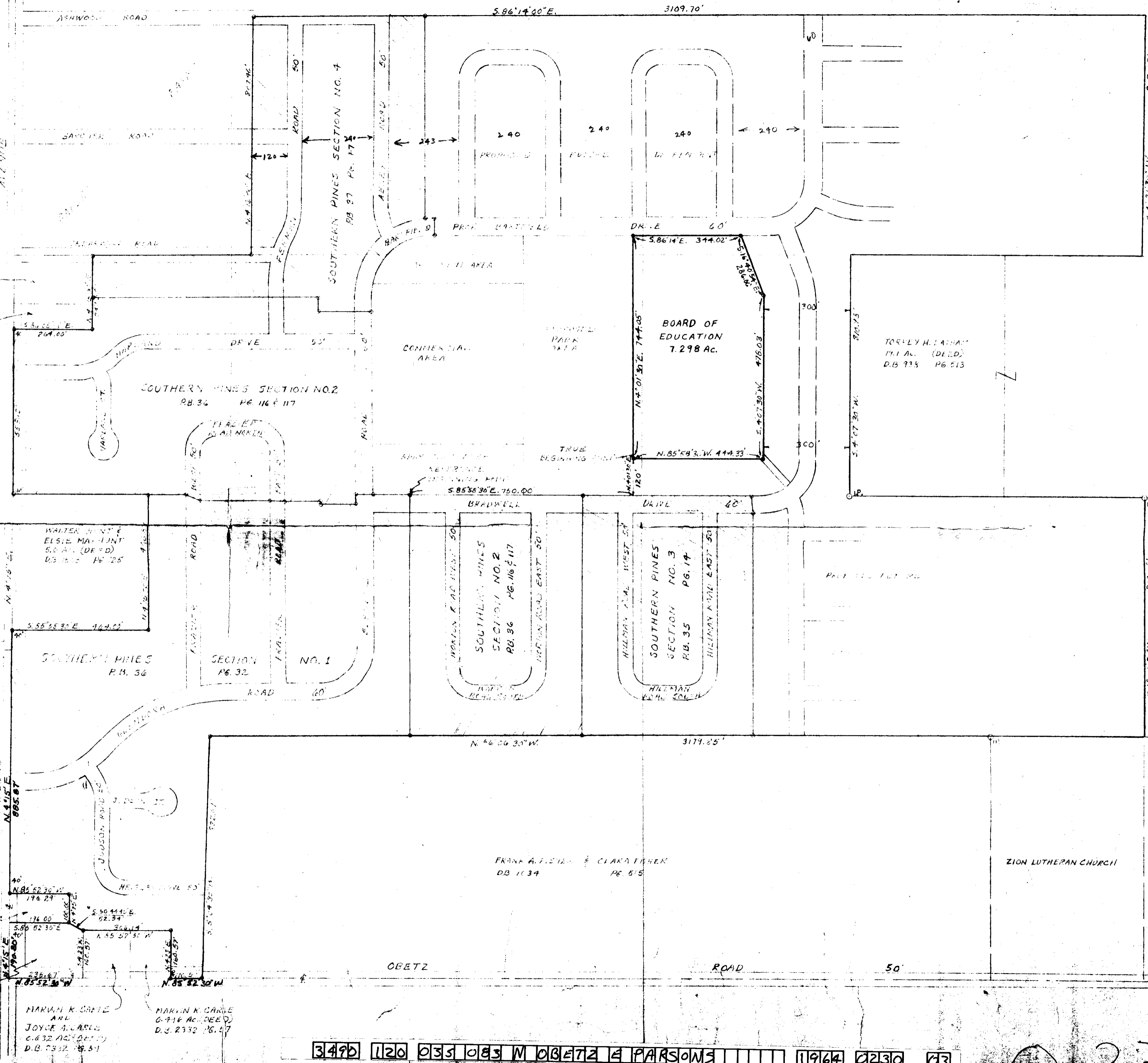
WILLIAM H. HARRIS &  
JENNIE L. HARRIS  
1.00 AC. (DEED)  
D.B. 1205 PG. 473

FRANK A. FRIED &  
CLARA FISHER  
0.916 AC. (DEED)  
D.B. 2332 PG. 51

WALTER W. ST. &  
ELSIE M. WINT  
50 AC. (DEED)  
D.B. 1515 PG. 25

JAMES S. HOOVER  
AND  
MILDRED C. HOOVER  
0.459 AC. (DEED)  
D.B. 1965 PG. 190

ETHEL M. CAPLE  
1.031 AC. (SURVEY)  
D.B. 2172 PG. 200  
D.B. 1425 PG. 560



PLAT SHOWING  
PROPOSED SCHOOL SITES  
IN  
SOUTHERN PINES DEVELOPMENT  
M. DILLCO CONSULTING ENGINEERS  
SCALE: 1"=200'

349D 1120 033 083 N OBETZ & PARSONS 11964 0230 03

23