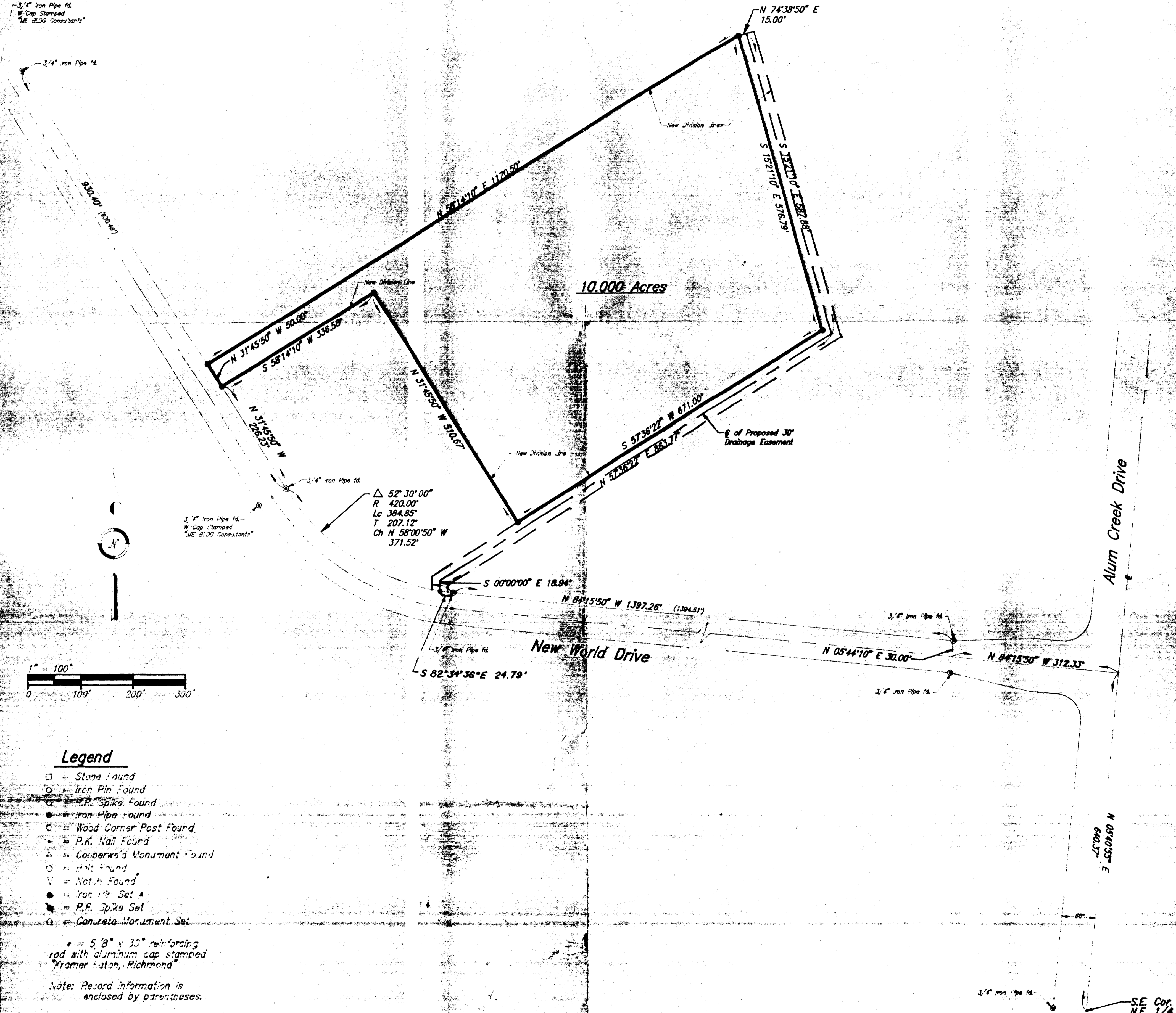


Discovery Park for Industry
 P.B. 40-106
 Virginia Holding Corporation
 D.R. 2812-101
 (388.523 Ac.)



Legend

- = Stone Found
- = Iron Pin Found
- ⊙ = P.R. Spike Found
- = Iron Pipe Found
- ⊕ = Wood Corner Post Found
- ⋄ = P.K. Nail Found
- ⊠ = Conerwin's Monument Found
- = Not Found
- ∇ = Not Found
- = Iron Pipe Set
- ⊙ = P.R. Spike Set
- ⊠ = Concrete Monument Set

● = 5" x 3" reinforcing rod with aluminum cap stamped "Kramer Station, Richmond"

Note: Record information is enclosed by parentheses.

Bearings are based upon the centerline of New World Drive (N 31°45'50" W) per the plat of Discovery Park For Industry as recorded in Plat Book 40, Page 106.

Surveyed By: *Michael A. Brobeck* Date: 8-19-95
 Michael A. Brobeck
 Reg. Professional Surveyor # 7569

Project No. 95-141 Date 8-19-95 Drawn by M.P.T. Checked by B.J.K. Drawing No. D-762		<p>KRAMER & ASSOCIATES Surveyors, Planners, & Design Consultants 17 N. Jervis St., Easton, Ohio 43825 410 S. J. Richmond, Indiana 47133 773-458-1332 FAX 773-456-0928</p>	Plat of Survey for Nordic Warehouses Inc. Nordic Warehouse Inc. 4875 New Centre Drive Suite "A" Willington N.C. 28403 E.G. Smithson, Agent	
-------------------------------------------------------------------------------------------------	--	----------------------------------------------------------------------------------------------------------------------------------------------------------------------------------------------------------------------------------------------	--------------------------------------------------------------------------------------------------------------------------------------------------------	--