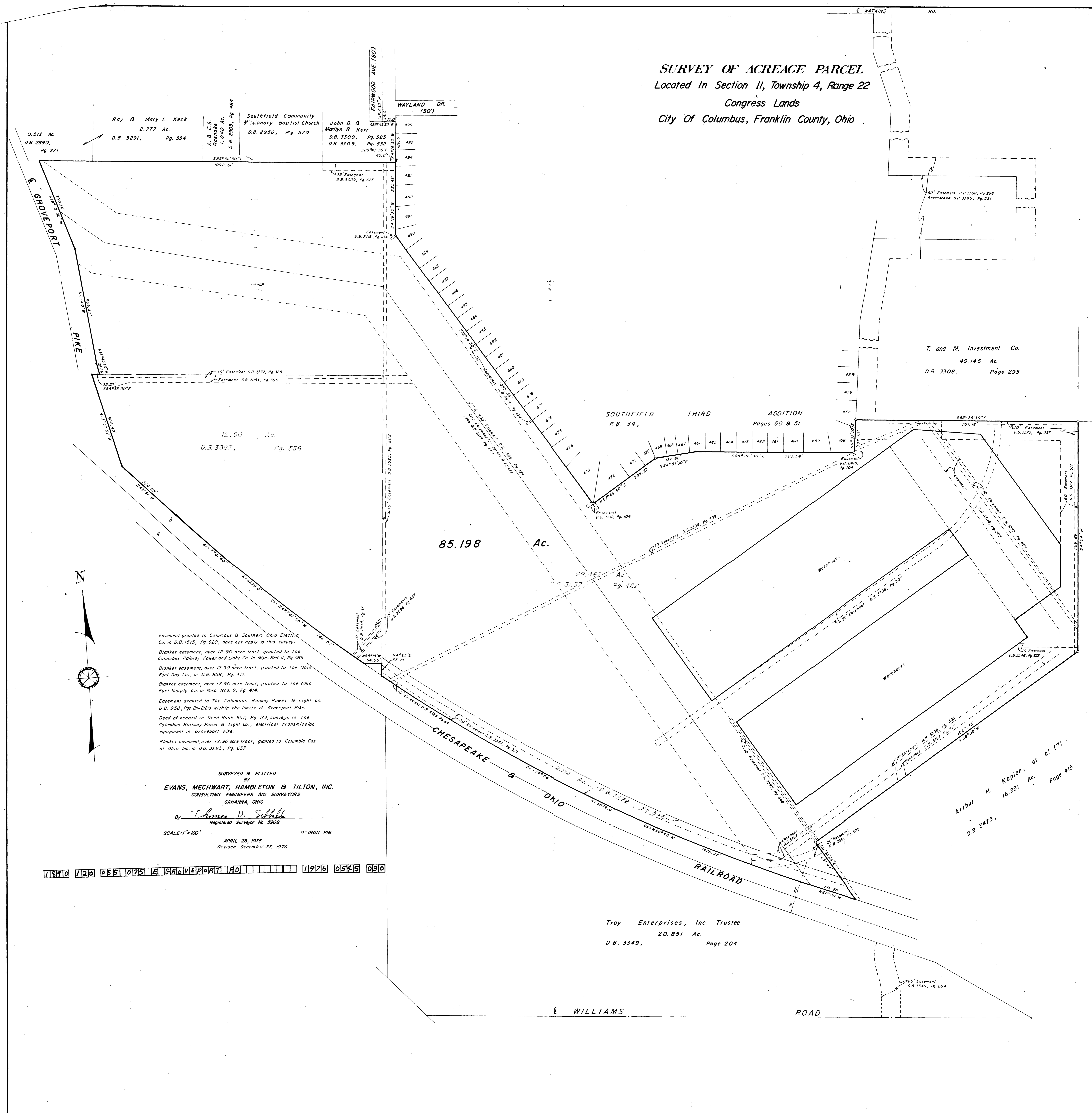


SURVEY OF ACREAGE PARCEL
 Located In Section 11, Township 4, Range 22
 Congress Lands
 City Of Columbus, Franklin County, Ohio



Roy & Mary L. Keck
 2.777 Ac.
 D.B. 3291, Pg. 554

A. B. C.S.
 Resolute
 1.040 Ac.
 D.B. 2890, Pg. 271

Southfield Community
 Missionary Baptist Church
 D.B. 2950, Pg. 570

John B. &
 Marilyn R. Kerr
 D.B. 3309, Pg. 525
 D.B. 3309, Pg. 532
 585°43'30"E
 40.0'

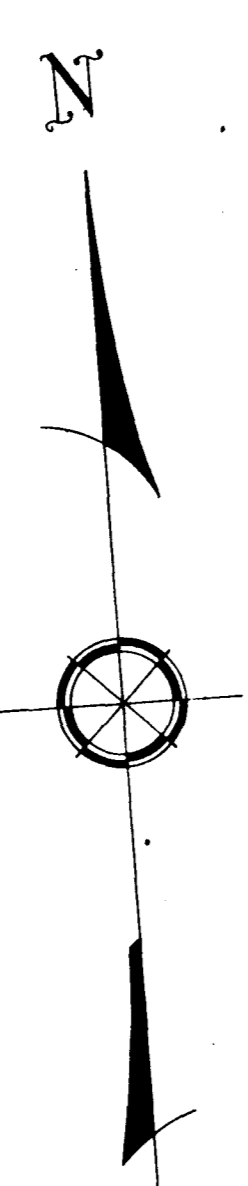
T. and M. Investment Co.
 49.146 Ac.
 D.B. 3308, Page 295

SOUTHFIELD THIRD ADDITION
 P.B. 34, Pages 50 & 51

12.90 Ac.
 D.B. 3367, Pg. 536

85.198 Ac.

Easement granted to Columbus & Southern Ohio Electric Co. in D.B. 1515, Pg. 620, does not apply to this survey.
 Blanket easement, over 12.90 acre tract, granted to The Columbus Railway Power and Light Co. in Misc. Rec. II, Pg. 585
 Blanket easement, over 12.90 acre tract, granted to The Ohio Fuel Gas Co., in D.B. 858, Pg. 471.
 Blanket easement, over 12.90 acre tract, granted to The Ohio Fuel Supply Co. in Misc. Rec. 9, Pg. 414.
 Easement granted to The Columbus Railway Power & Light Co. D.B. 958, Pgs. 24-28 within the limits of Groveport Pike.
 Deed of record in Deed Book 957, Pg. 173, conveys to The Columbus Railway Power & Light Co., electrical transmission equipment in Groveport Pike.
 Blanket easement, over 12.90 acre tract, granted to Columbia Gas of Ohio Inc. in D.B. 3293, Pg. 637.



SURVEYED & PLATTED
 BY
EVANS, MECHWART, HAMBLETON & TILTON, INC.
 CONSULTING ENGINEERS AND SURVEYORS
 GAHANNA, OHIO
 By Thomas D. Silbald
 Registered Surveyor No. 5908
 SCALE: 1"=100'
 APRIL 28, 1976
 Revised December 27, 1976

1370 120 055 075 E GROVEPORT RD 1976 0515 090

Troy Enterprises, Inc. Trustee
 20.851 Ac.
 D.B. 3349, Page 204

Arthur H. Kaplan, et al (7)
 16.331 Ac.
 D.B. 3473, Page 415