

O-53M

Point of Reference

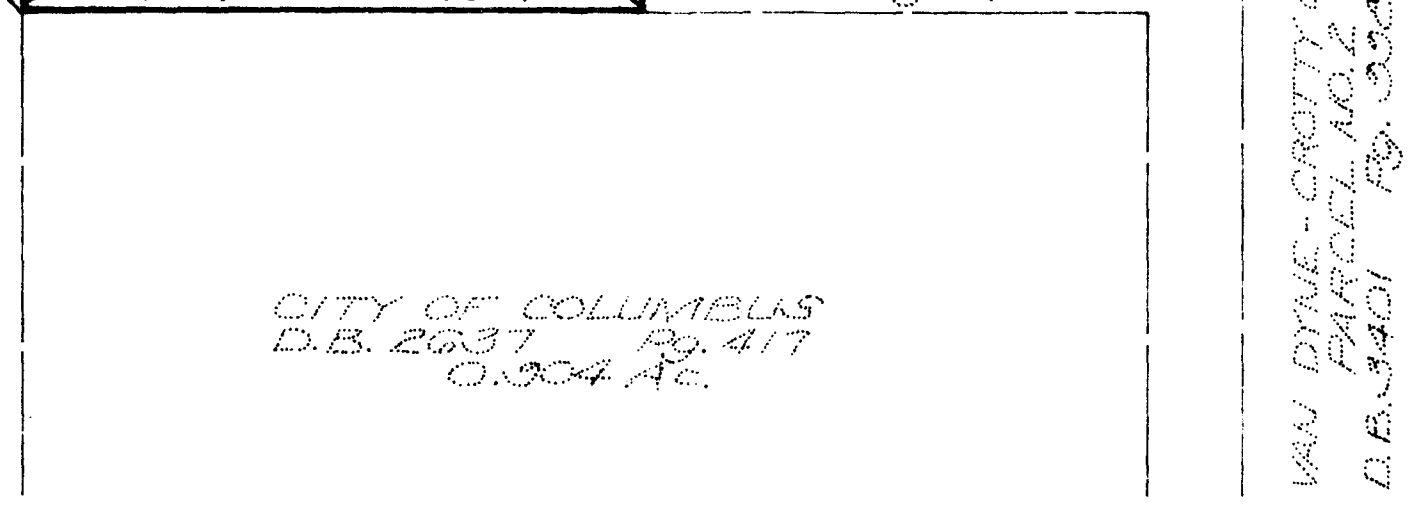
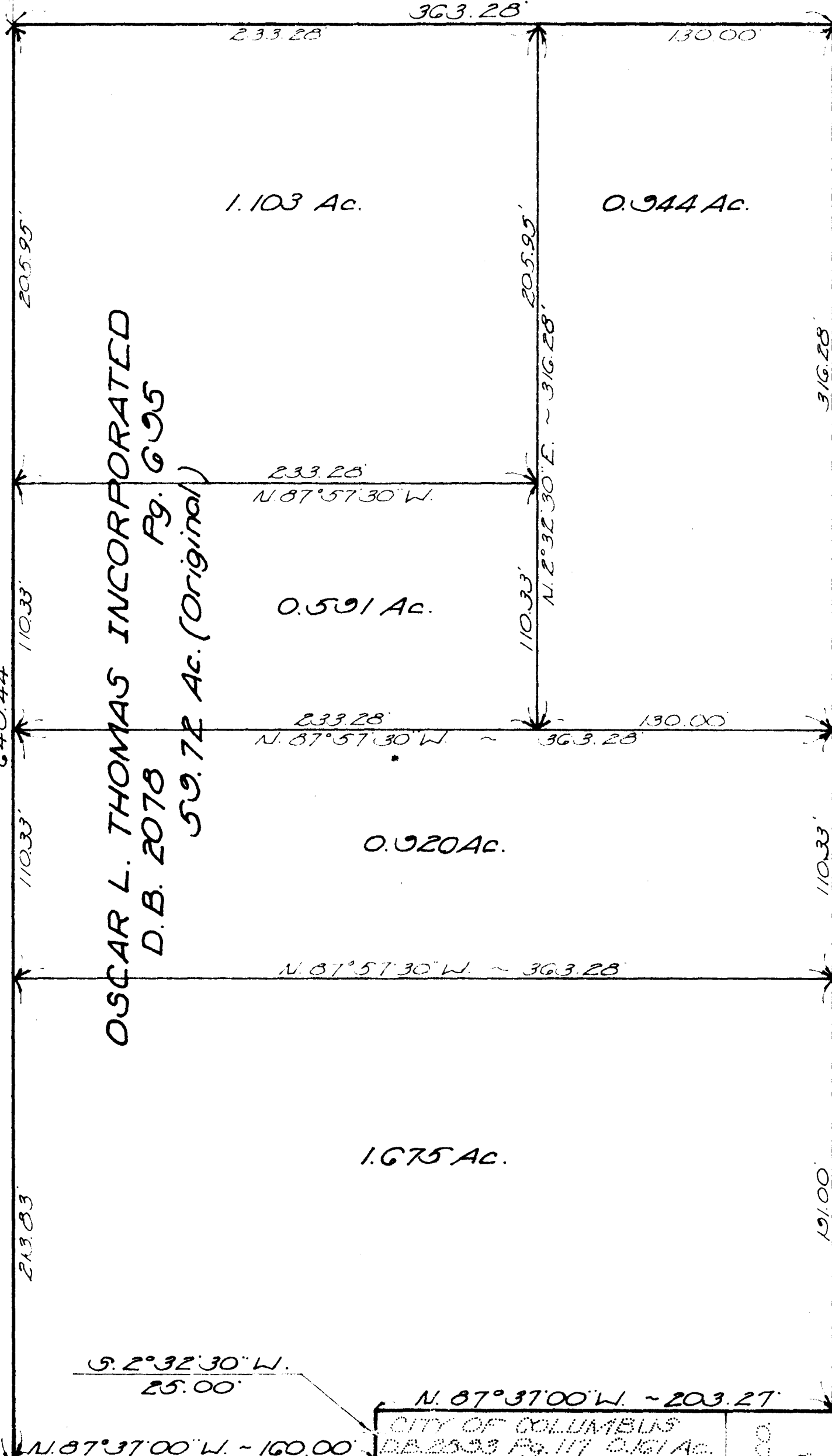
È UNIVERSAL ROAD (60')  
N. 87° 57' 30" W.

(Dedication Plat of Progress Avenue,  
Universal Road, Advance Avenue, &  
Utility Easements P.B. 37 Pg. 13)

È FAIRWOOD AVENUE (50')  
N. 2° 32' 30" E.  
640.44'

OSCAR L. THOMAS INCORPORATED  
Pg. 635  
D.B. 2078  
59.72 Ac. (Original)

LEDERER TERMINAL WAREHOUSE CO.  
D.B. 3154 Pg. 608  
7.236 Ac.



1,103  
944  
591  
920  
1,675  
5,233

4,3984  
to

1510 1120 039 069 È FAIRWOOD AVE 1974 05313 003

TYPE OF DRAWING		BOUNDARY PLAT	
Plat of 1.103 Ac., 0.944 Ac., 0.591 Ac., 0.920 Ac., and 1.675 Ac.			
Date: 8-1-74			
SCALE: 1" = 50'	FOR: OSCAR L. THOMAS		
DRAWN: MA	HOCKADEN-LIPES-ROUSCULP, INC.		
CHECKED:	CONSULTING ENGINEERS		
REVISED:	883 N. CASSADY AVE.		
	COLUMBUS, OHIO 43219		
	614/252-0993		
	SHEET NO.	1 OF 1	
	ORDER NO.	32251	