

N-26

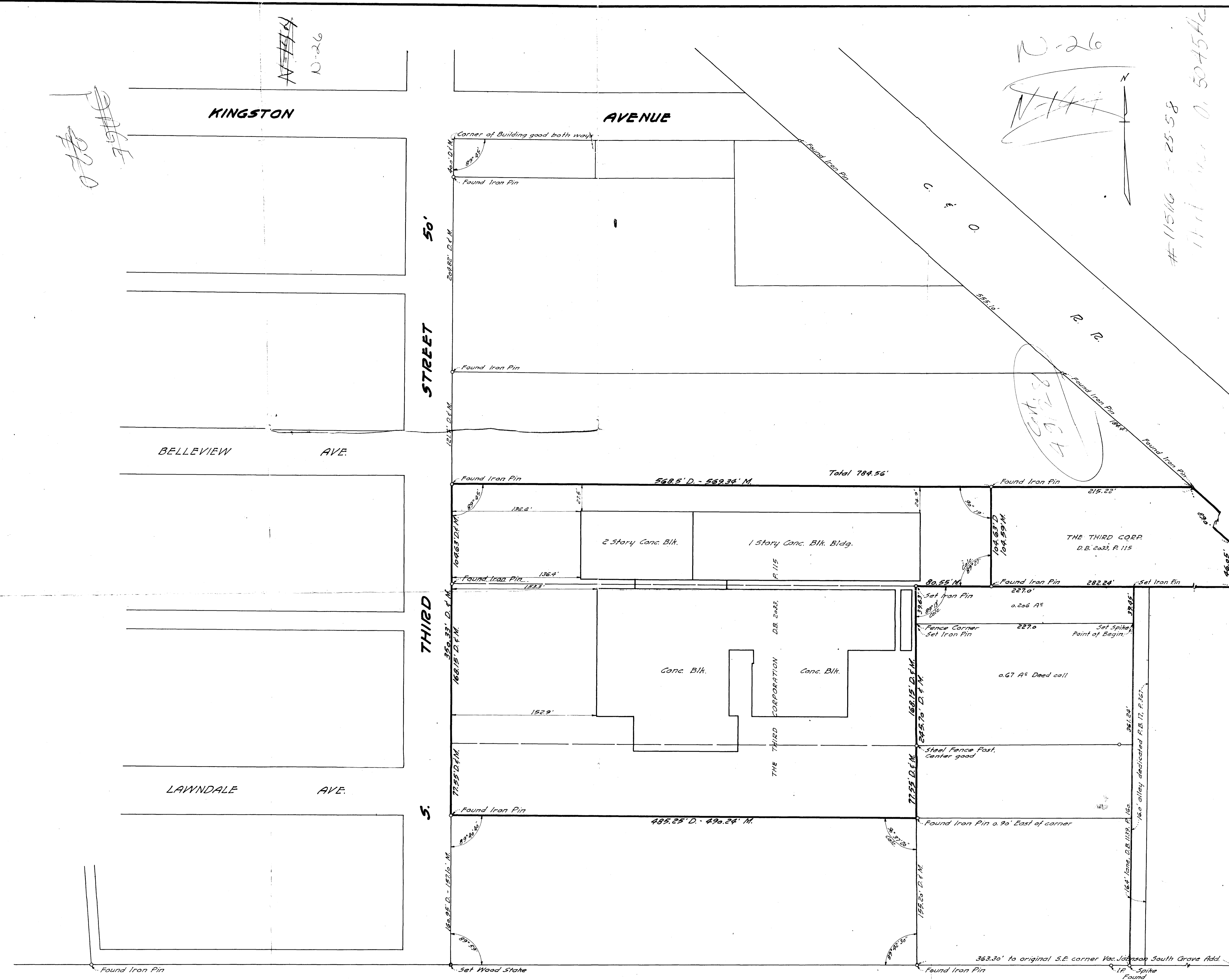
N-26

N-26

#11516 = 25.58

171' x 110' = 0.5045 Ac

Cont. 1-21-59
49728



Note: All physical markings of property corners shown hereon have been established by me to be correct or as noted.

REPORT OF SURVEY
 OF
 PART OF SECTION 4, TOWNSHIP 4, RANGE 22,
 CONGRESS LANDS, MARION TOWNSHIP,
 FRANKLIN COUNTY, OHIO
 FOR
THE ORAN COMPANY
 COLUMBUS, OHIO

SCALE: 1" = 40'
 SEPTEMBER 24, 1955
 REV. APRIL 30, 1957
 REV. FEBRUARY 28, 1958

Cont 1-21-59 RMB
 171' x 110' = 0.5045 Ac
 MARION TWP

Ameyers, Jr.
MYERS SURVEYING CO.
 CIVIL ENGINEERS AND SURVEYORS
 COLUMBUS, OHIO